



TECHNICAL DIAGRAMS



LC700M 3

01706 353 633

WWW.FOODSERVICESPARES.COM

PARTI DI RICAMBIO
PIECES DETACHEES
SPARE PARTS
ERSATZTEILE
LISTA DE RECAMBIOS

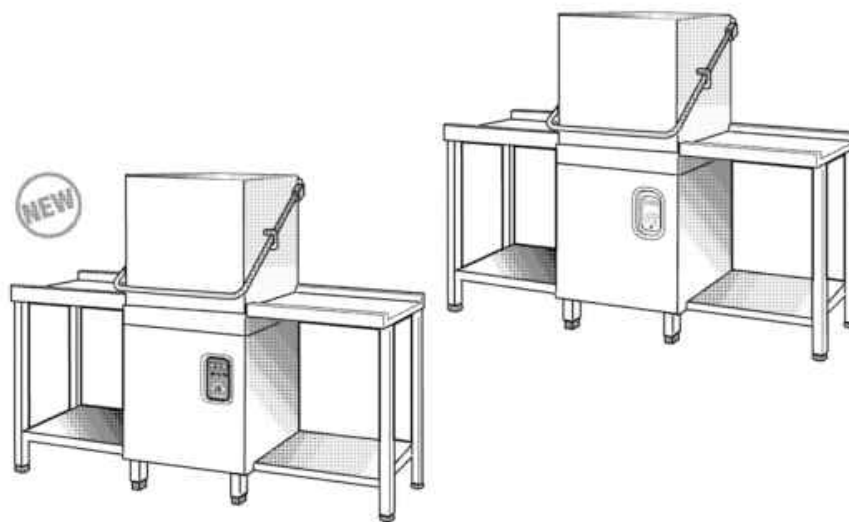
LC 700 BT

LC 900 BT

LC 1200 BT

PRODUCTION START 10/03

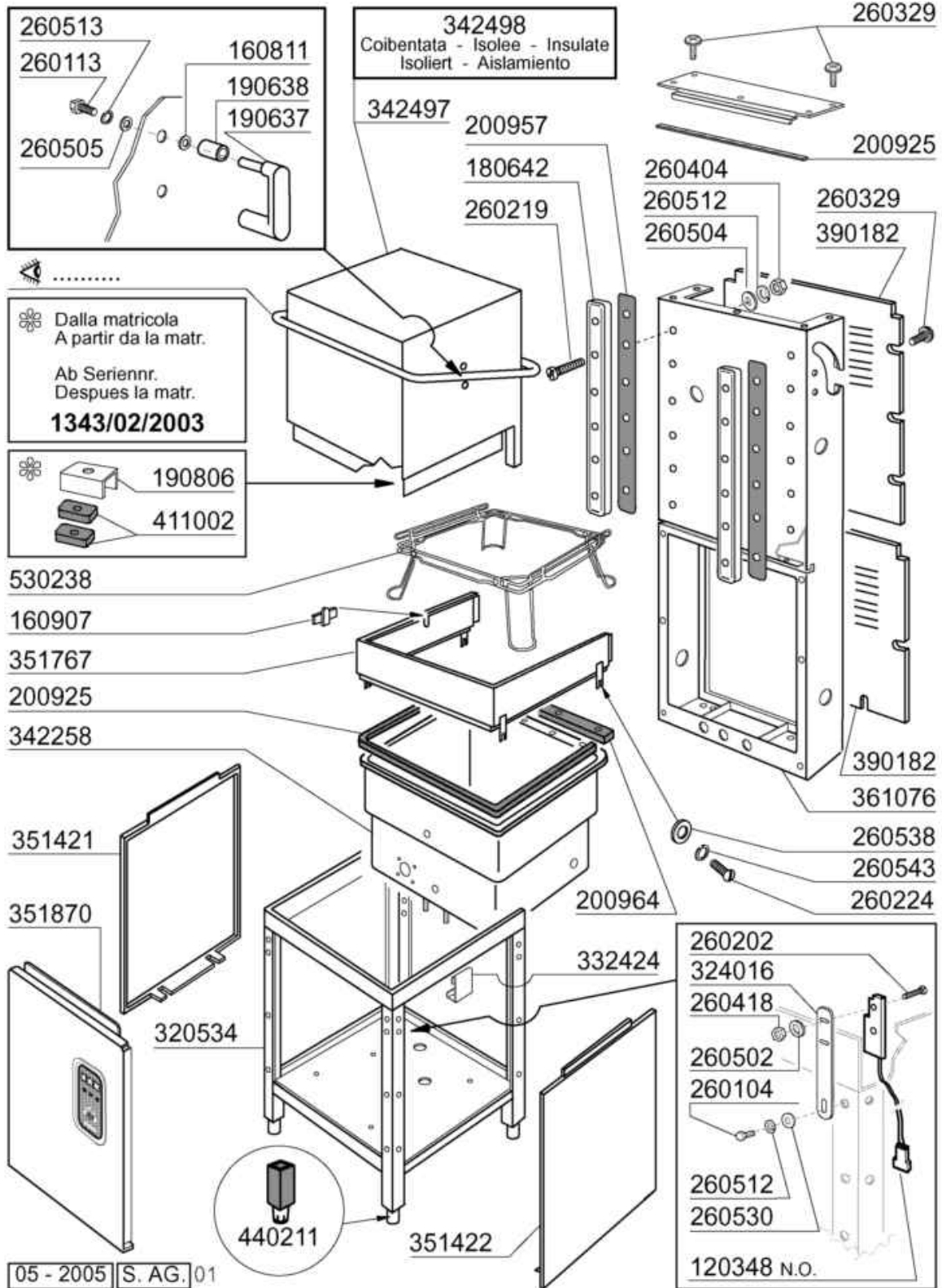
NEW DESIGN 04/05



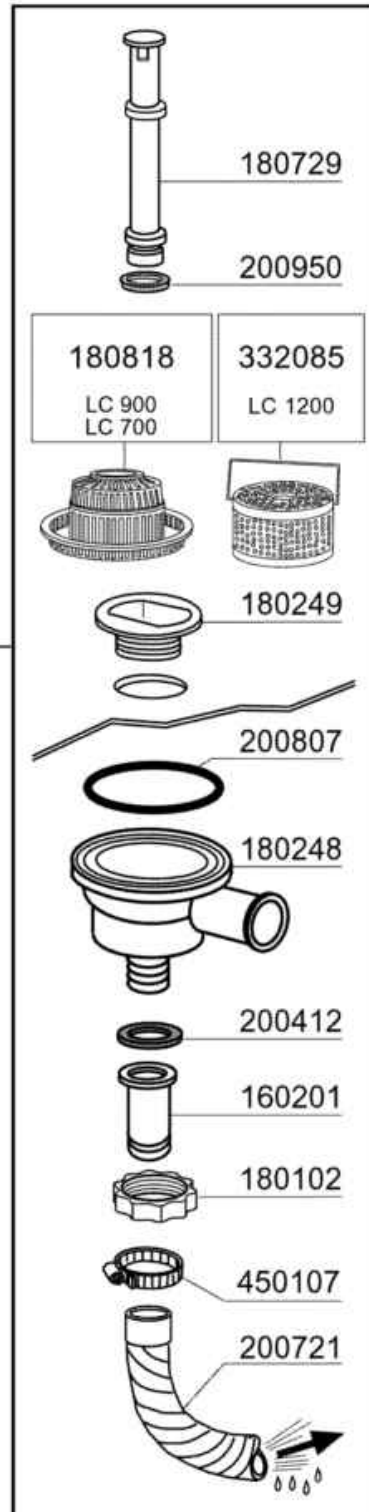
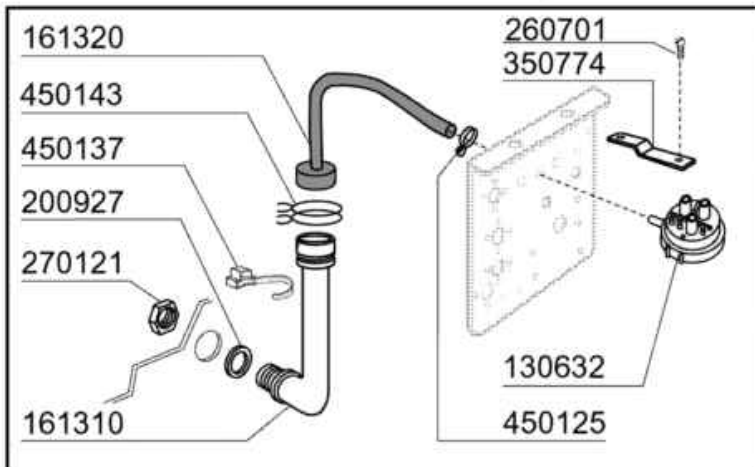
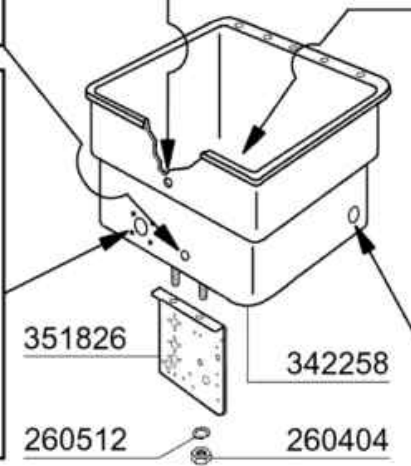
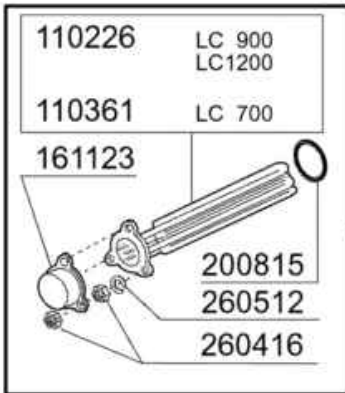
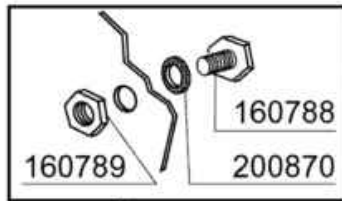
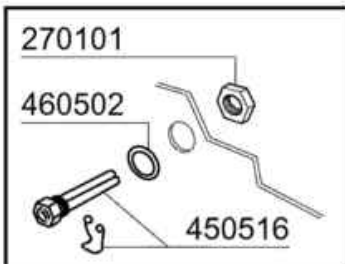
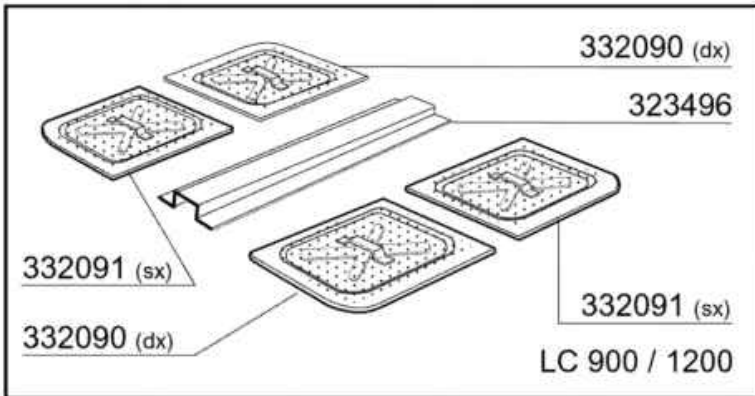
 **COMENDA**

05 - 2005 S. AG.

- 1 Hood/Tank
- 2 Tank
- 3 Handle
- 4 Wash/Rinse column
- 5 Wash arm
- 6 Wash/Rinse column
- 7 Pump
- 8 Pump
- 9 Control panel
- 10 Control box
- 11 Thermostat/solenoid valve group
- 12 Rinse aid injector

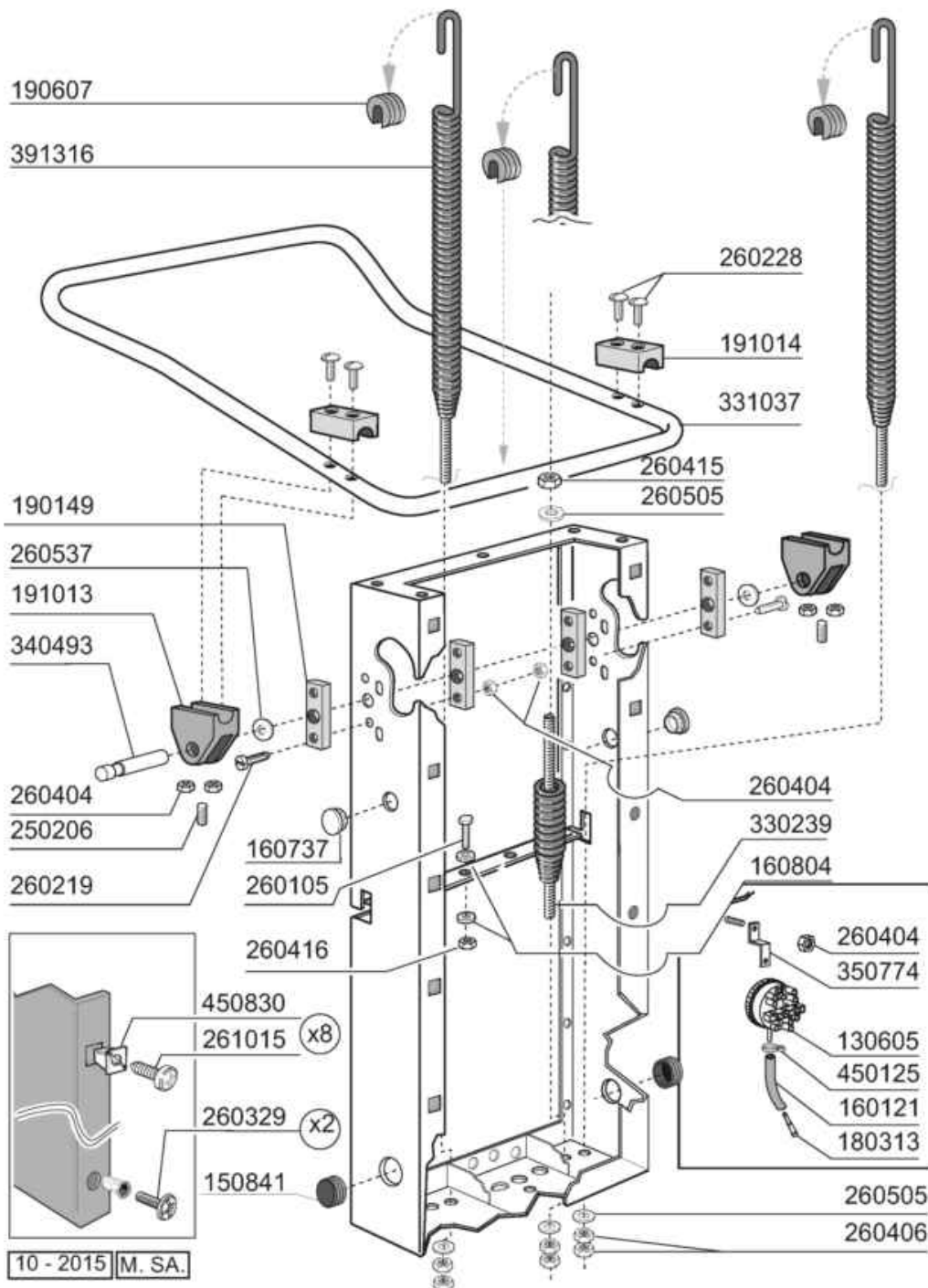


Code	Description	Price (€)
120348	MAGN.SWITCH (N.O.)	
160811	WASHER F2 18X8.5X1 ALGOF	
160907	CONNECTION FOR TABLES C95-155	
180642	GUIDE	
190637	GUIDE FOR DOOR "C"	
190638	ROLLER FOR "C" DOOR GUIDE	
190806	MAGNET HOUSING	
200925	GASKET	
200957	GASKET	
200964	GASKET 618X14 SP.2	
260104	STAINL.ST TE-SCREW A2 6X16 UNI	
260113	STAINL.ST.TE SCREW 8X20 A2 UNI	
260202	SCREW TCP 3X16	
260219	STAINL.ST TCP SCREW 6X35 A2 UN	
260224	TB-SCREW 6X15 B23-10-11-12	
260329		
260404	STAINLESS STEEL NUTS D6 UNI 55	
260418	SELF-LOCKING NUT M4	
260502	S/S FLAT WASHER D.4	
260504	ST/ST FLAT WASHER D6	
260505	STAINL.STEEL FLAT WASHER D8	
260512	ST/ST GROWER WASHER D6	
260513	GROWER WASHER D8	
260530	STAINL.ST WASHER 7X22X2	
260538	WASHER 18X6X1,5 ST/ST	
260543	WASHER D.6 ST/ST	
320534	LOWER FRAME	
324016	SWITCH BRACKET	
332424	HOSE SUPPORT	
342258	TANK	
342497	HOOD	
342498	INSULATED HOOD	
351421	LEFT PANEL	
351422	RIGHT PANEL	
351767	FRONT PANEL	
351870	FRONT PANEL LC2004	
361076	FRAME	
411002	PERMANENT MAGNET 24X12	
440211	LEGS 40x40x1	
530238	RACK SUPPORT C-SERIES	

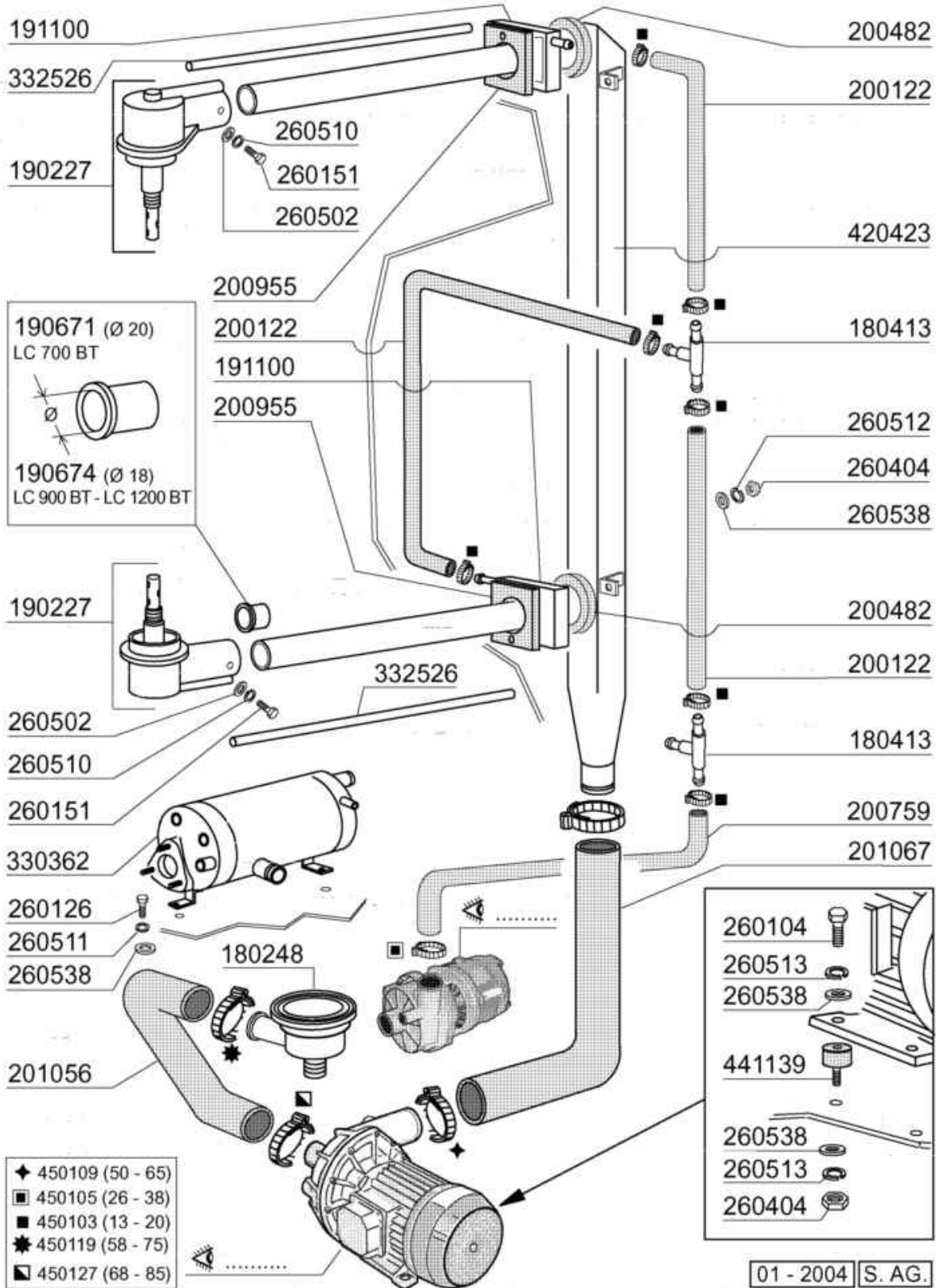


05 - 2005 | S. AG.

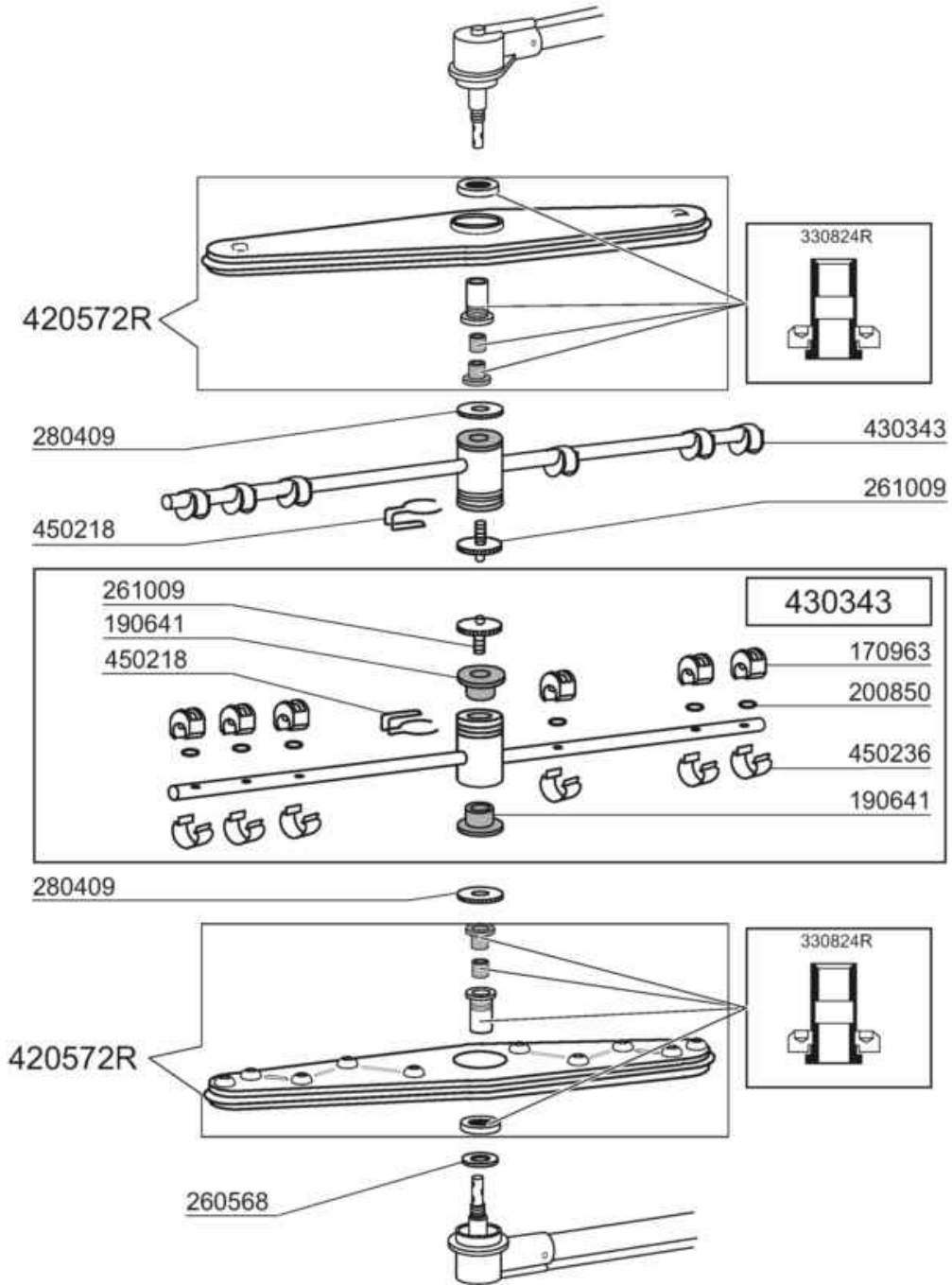
Code	Description	Price (€)
110226	HEAT. ELEMENT 3000W 230/400V	
110361	HEAT. ELEMENT 2200W.230V	
130632	PRESSURE SWITCH 1L 75-45	
160201	ELBOW F.TANK INLET MOPLEN	
160788	PLUG	
160789	NUT	
161123	HEAT.ELEMENT COVER H42 SNL	
161310	AIR CHAMBER FOR GLASSWASHERS B	
161320	HOSE FOR AIR CHAMBER	
180102	DRAIN PIPE NUT 1"1/2 F45-55	
180248	SUCTION TANK	
180249	NUT	
180729	OVERFLOW PIPE	
180818	STRAINER FOR FC	
200412	GASKET DRAIN 1 1/2" 45X33X3	
200721	DRAIN HOSE 28X35 3MT.	
200807	O-RING 3,53 X 110,72	
200815	O-RING F. HEAT. ELEM.	
200870	GASKET 18X10X2	
200927	GASKET FOR AIR TRAP	
200950	VITON GASKET	
260404	STAINLESS STEEL NUTS D6 UNI 55	
260416	STAINLESS STEEL NUTS M6	
260512	ST/ST GROWER WASHER D6	
260701	SCREW 3,5X9,5	
270101	HEXAGON LOCK NUT 1/2"	
270121	NUT FOR AIR TRAP	
323496	STRAINERS SUPPORT	
332085	STRAINER LC	
332090	RIGHT STRAINER	
332091	LEFT STRAINER	
342258	TANK	
350774	BRACKET	
351826	BRACKET	
450107	CLAMP FE ZN 38-50 H=12,2	
450125	ELASTIC CLAMP D. 10,4X9,8	
450137	COLLAR CONNECTION WITH BASE 31	
450143	CLAMP D.39,7 X 37,7	
450516	THERMOSTAT SHIELD FOR 2 TERMOS	
460502	GASKET 30X21X2	



Code	Description	Price (€)
130605	PRESSURE SWITCH 50-30 1 LEVEL	
150841	CABLE HOLDER	
160121	HOSE EPDM D. 5 X 9	
160737	PLUG HEYCO D.34,9	
160804	GASKET D.6	
180313	TEE-NIPPLE	
190149	REINFORCEMENT FOR HANDLE SUPP.	
190607	HANDLE BUSH C30-70	
191013	HINGE F. SUPPORT C30-C70	
191014	FLANGE F. HANDLE C30-70	
250206	GRUB SCREW D.6	
260105	SCREW TE 6X20	
260219	STAINL.ST TCP SCREW 6X35 A2 UN	
260228	STAINL.ST SPECIAL SCREW 6X42 3	
260329		
260404	STAINLESS STEEL NUTS D6 UNI 55	
260406	NUT 8MA	
260415	STAINLESS STEEL SELF-LOCKING N	
260416	STAINLESS STEEL NUTS M6	
260505	STAINL.STEEL FLAT WASHER D8	
260537	STAINL.STEEL FLAT WASHER D13X2	
261015	SCREW 3,9X13	
330239	ROD	
331037	HANDLE C95-155-165 ISOLATED	
340493	PIN F. HINGE C30	
350774	BRACKET	
391316	SPRING FOR HANDLE C85/140-G75	
450125	ELASTIC CLAMP D. 10,4X9,8	
450830	SCREW	

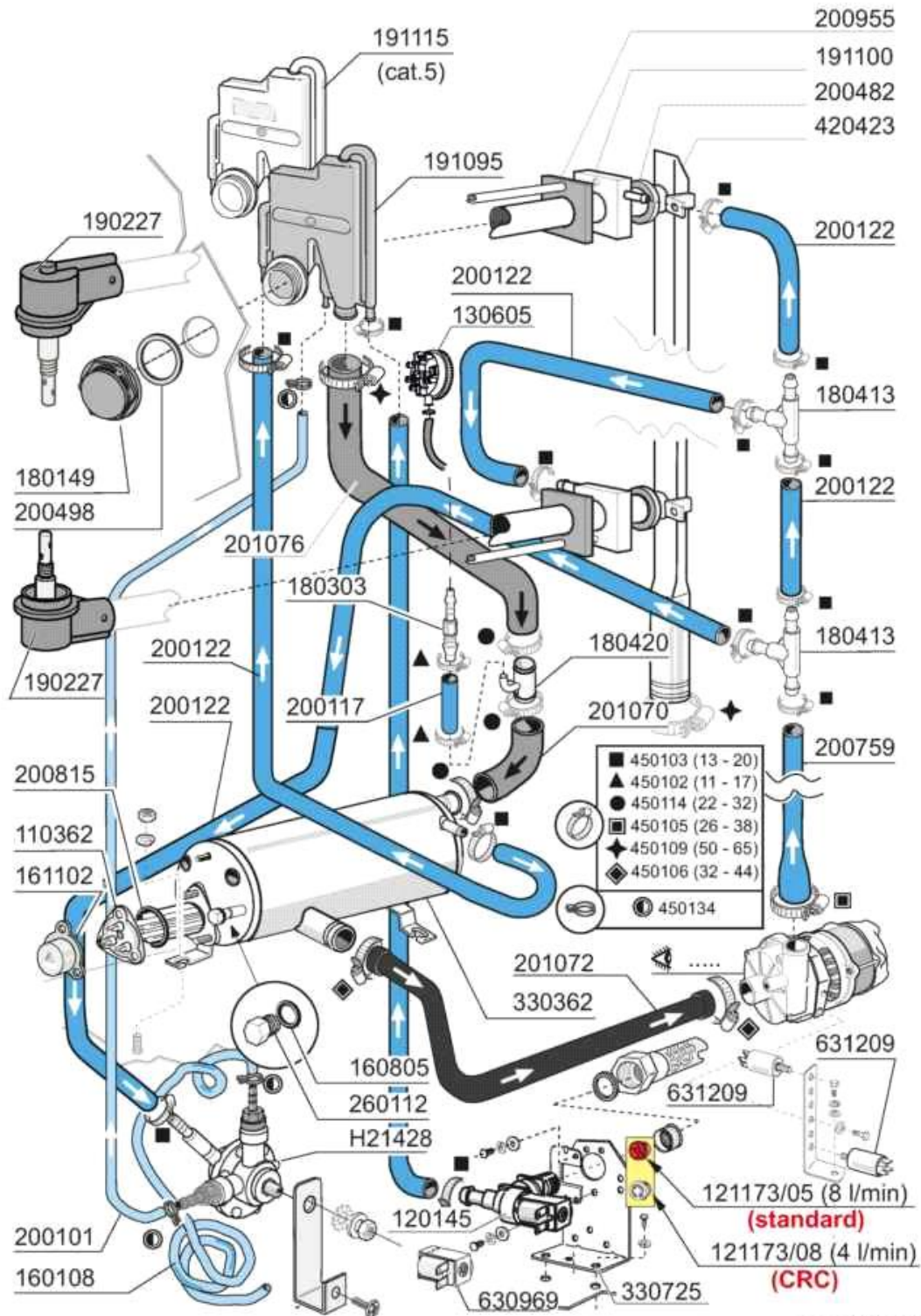


Code	Description	Price (€)
180248	SUCTION TANK	
180413	TEE NIPPLE D.11,5 - RINSE ASSE	
190227	ARM SUPPORT	
190671	BUSH	
190674	BUSH	
191100	RINSE COLLECTOR C-LC	
200122	HOSE 11X19	
200482	GASKET 60X54 RAMP C140	
200759	DELIVERY HOSE FOR ECORINSE AC-	
200955	GASKET	
201056	WASH PUMP INLET HOSE	
201067	OUTLET HOSE	
260104	STAINL.ST TE-SCREW A2 6X16 UNI	
260126	SCREW TE 5X12	
260151	SCREW TE 4X12	
260404	STAINLESS STEEL NUTS D6 UNI 55	
260502	S/S FLAT WASHER D.4	
260510	GROWER WASHER D.4	
260511	GROWER WASHER D.5	
260512	ST/ST GROWER WASHER D6	
260513	GROWER WASHER D8	
260538	WASHER 18X6X1,5 ST/ST	
330362	BOOSTER FOR BREAK TANK	
332526	RINSE HOSE	
420423	WASH RAMP C/LC	
441139	VIBRATION-DAMPING FEET 25X20X6	
450103	CLAMP FE ZN. 13-20 H=9	
450105	CLAMP FE ZN. 26-38 H=12,2	
450109	CLAMP 50-65	
450119	CLAMP FE ZN. 58-75 H=12,2	
450127	CLAMP FE ZN. 68-85 H=12,2	



02 - 2016 MS

Code	Description	Price (€)
170963	RINSE JET X FC	
190641	BUSH FOR C95-155-165 RINSE ARM	
200850	O-RING	
260568	S/S FLAT WASHER D.28X21X1	
261009	RETAIN.SCREW FOR WASH-RINSE AR	
280409	RETAIN.LOCK NUT CENTR.CROSS C1	
330824R	WASHARM BUSH KIT	
420572R	WASH ARM LC	
430343	RINSE ARM LC700/900/1200	
450218	SPRING F.RINSE ARM RETAIN.SCRE	
450236	SPRING FOR WASHER 170963	



09-2015 MS

Code	Description	Price (€)
110362	HEAT.ELEMENT 9000W 220/380V	
120145	SOLENOID VALVE 12 LT 1 WAY	
121173/05	FLUX REGULATOR 8 l/min RED	
121173/08	FLUX REGULATOR 4,5l/min WHITE	
130605	PRESSURE SWITCH 50-30 1 LEVEL	
160108	INJECT.INLET HOSE D.8X5	
160805	GASKET D.8	
161102	ELEMENT COVER MOPL. H50 (HIGH)	
180149	PLASTIC NUT	
180303	DOUBLE HOSE BARB	
180413	TEE NIPPLE D.11,5 - RINSE ASSE	
180420	TEE-NIPPLE	
190227	ARM SUPPORT	
191095	CONTAINER FOR BREAK TANK	
191100	RINSE COLLECTOR C-LC	
191115	BREAK TANK	
200101	RUBBER TUBE 25X35	
200117	RUBBER HOSE 7X16	
200122	HOSE 11X19	
200482	GASKET 60X54 RAMP C140	
200498	GASKET	
200759	DELIVERY HOSE FOR ECORINSE AC-	
200815	O-RING F. HEAT. ELEM.	
200955	GASKET	
201070	HOSE	
201072	HOSE	
201076	HOSE	
260112	STAINLESS STEEL TE-SCREW 8X16	
330362	BOOSTER FOR BREAK TANK	
330725	STANDARD BRACKET F.SOLEN.VALV	
420423	WASH RAMP C/LC	
450102	CLAMP FE ZN 11-17 H=9	
450103	CLAMP FE ZN. 13-20 H=9	
450105	CLAMP FE ZN. 26-38 H=12,2	
450106	CLAMP FE ZN 32-44 H=12,2	
450109	CLAMP 50-65	
450114	CLAMP FE ZN.22-32 H=12,2	
450134	ELASTIC HOSE CLIP D.9,3/8,8	
630969	COIL S4216 220/50HZ	
631209	ANTI-NOISE FILTER	
H21428	RINSE AID INJECTOR	

Fino alla Matricola - Up to serial number
jusqu'à la matr. - Bis Seriennr.
Hasta la matr.
DA002913/03/2013

LC 700 BT
100801
220/240 V
50 Hz - HP 1
Kw 0,75 (5223)

LC 900 BT
100797 ★
230/400V
50 Hz - HP 1,5
Kw 1,1 (5233)

LC 1200 BT
100795 ★★
230/400V
50 Hz - HP 2
Kw 1,5 (5234)

Risciacquo - Rincage - Rinse - Aclarado - Nachspülpumpe

630538
INOX-STAINLESS
STEEL-STAHL-ACIER
631704 (50 hz)
631711 (60 hz)

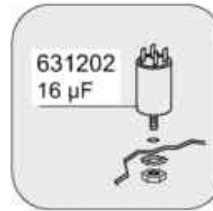
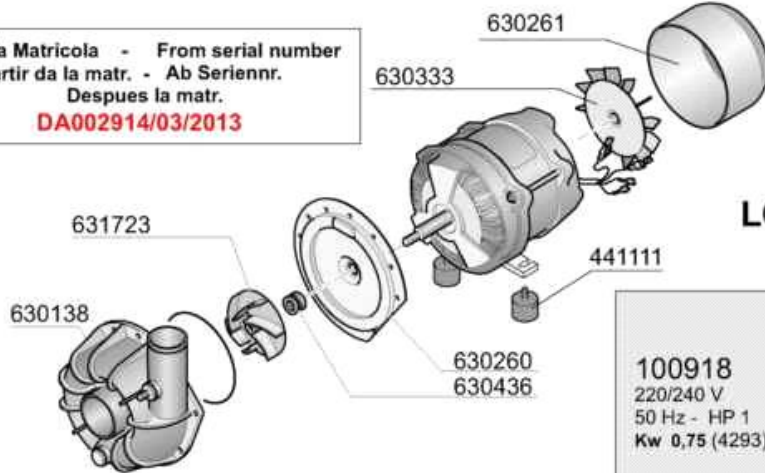
630533
631698
PLASTICA-PLASTIC
KUNSTSTOFF-PLASTIQUE

	STANDARD	100802	230 V	50Hz	kW 0.29
	SPECIAL	100889	440 V	60Hz	kW 0.26
		100897	230 V	60Hz	kW 0.33
		-	-	-	-

03 - 2013 M.SA.

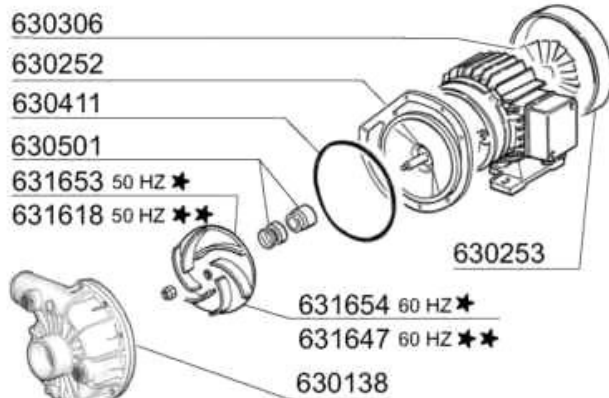
Code	Description	Price (€)
100795	PUMP 2HP 380/3/50HZ	
100797	PUMP HP 1,5 380/3/50	
100801	PUMP 1HP 230/1	
100802	PUMP HP 0,3 230V-50HZ	
100889	PUMP HP 0,3 440V-60HZ	
100897	PUMP HP 0,3 230V-60HZ	
630136	PUMP VOLUTE LGB ZF131DX	
630138	VOLUTE FOR PUMP LC	
630249	PUMP FLANGE ZF131 DX	
630252	BACK PLATE PUMP LC	
630253	FAN HOUSING FOR PUMP 100797	
630254	FAN HOUSING FOR PUMP 100801	
630306	PUMP FAN IMPELLOR FI HP.2-3	
630330	PUMP 100801 FAN IMPELLOR	
630411	O-RING PUMP FI HP 2-2,7	
630427	O-RING FOR PUMP ZF131DX	
630501	SEAL FOR PUMP HP 2-3-3,2	
630533	PUMP SEALS WASH PUMP ZF131DX	
630538	SEAL LGBZF131DX	
631202	CONDENSER 16 MF 450V	
631216	CAPACITOR 6.3 MF 450V	
631618	PUMP IMPELLER F HP2-D.116,5	
631647	IMPELLER D.100-60HZ-1204/5	
631653	PUMP IMPELLER 1,5 HP 50HZ 1241	
631654	PUMP IMPELLER 1,5HP 50HZ 1241	
631698	PUMP IMPELLER ZF131DX	
631704	PUMP IMPELLER ZF131DX	
631711	IMPELLER LGB ZF131DX 60HZ D.66	
632501	PUMP IMPELLER	
632502	PUMP IMPELLER 1HP 60HZ-5223	

Dalla Matricola - From serial number
 A partir da la matr. - Ab Seriennr.
 Despues la matr.
DA002914/03/2013



LC 700

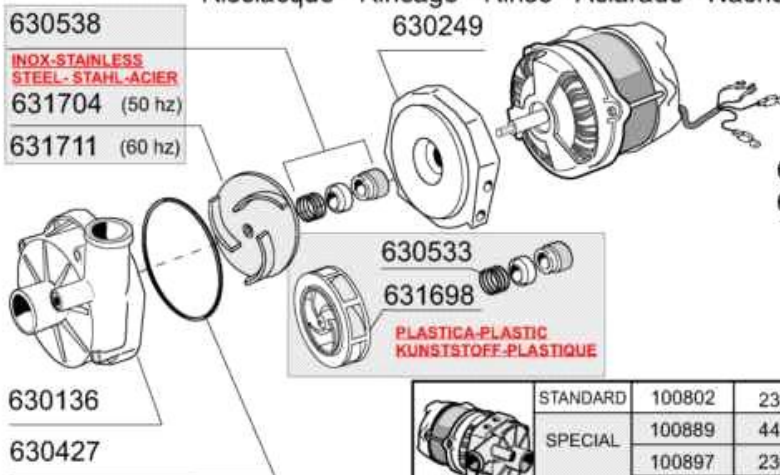
100918
 220/240 V
 50 Hz - HP 1
 Kw 0,75 (4293)



LC 900 BT
 100797 ★
 230/400V
 50 Hz - HP 1,5
 Kw 1,1 (5233)

LC 1200 BT
 100795 ★★
 230/400V
 50 Hz - HP 2
 Kw 1,5 (5234)

Risciacquo - Rincage - Rinse - Aclarado - Nachspülpumpe

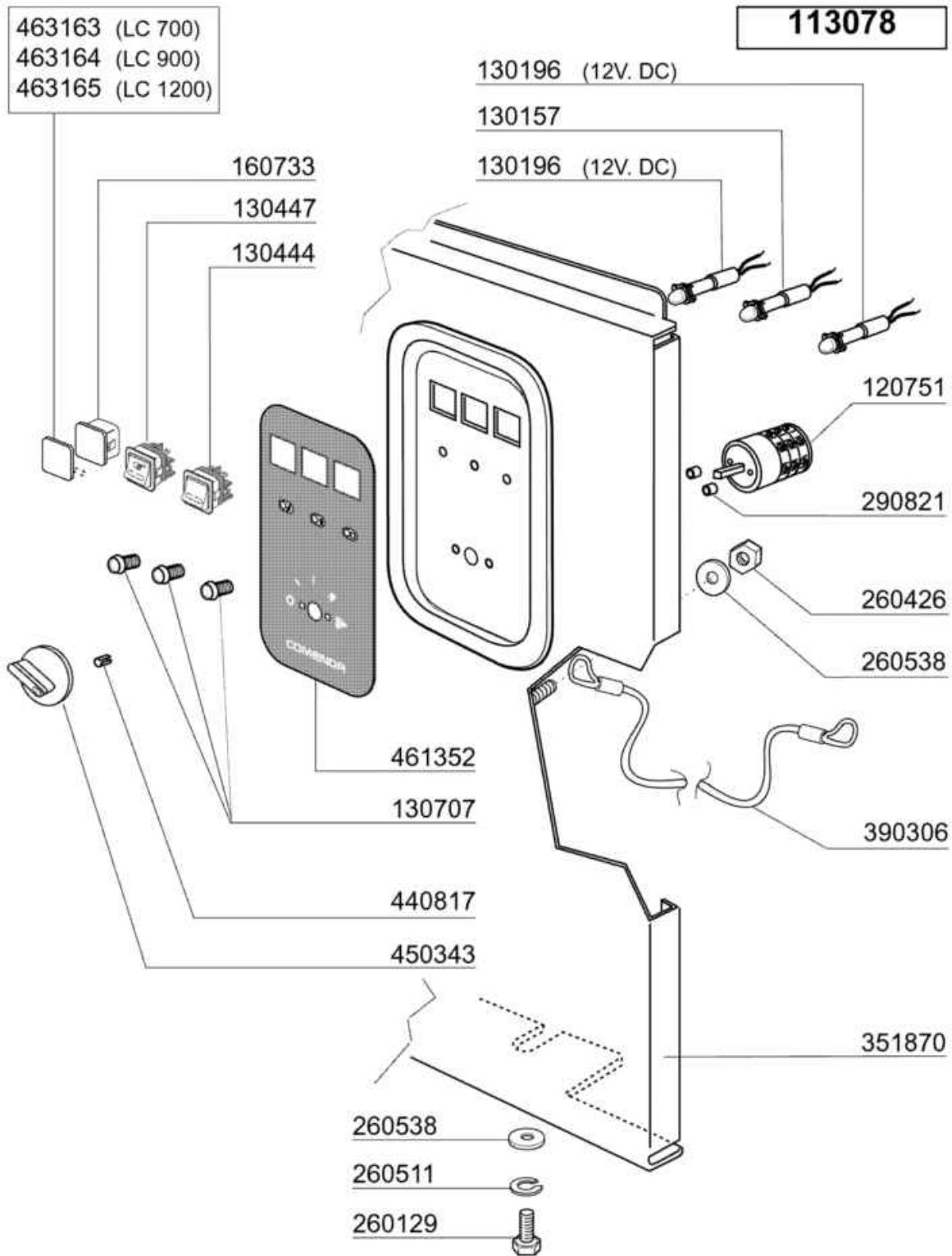


630136
 630427

	STANDARD	100802	230 V	50Hz	kW 0.29
	SPECIAL	100889	440 V	60Hz	kW 0.26
		100897	230 V	60Hz	kW 0.33
		-	-	-	-

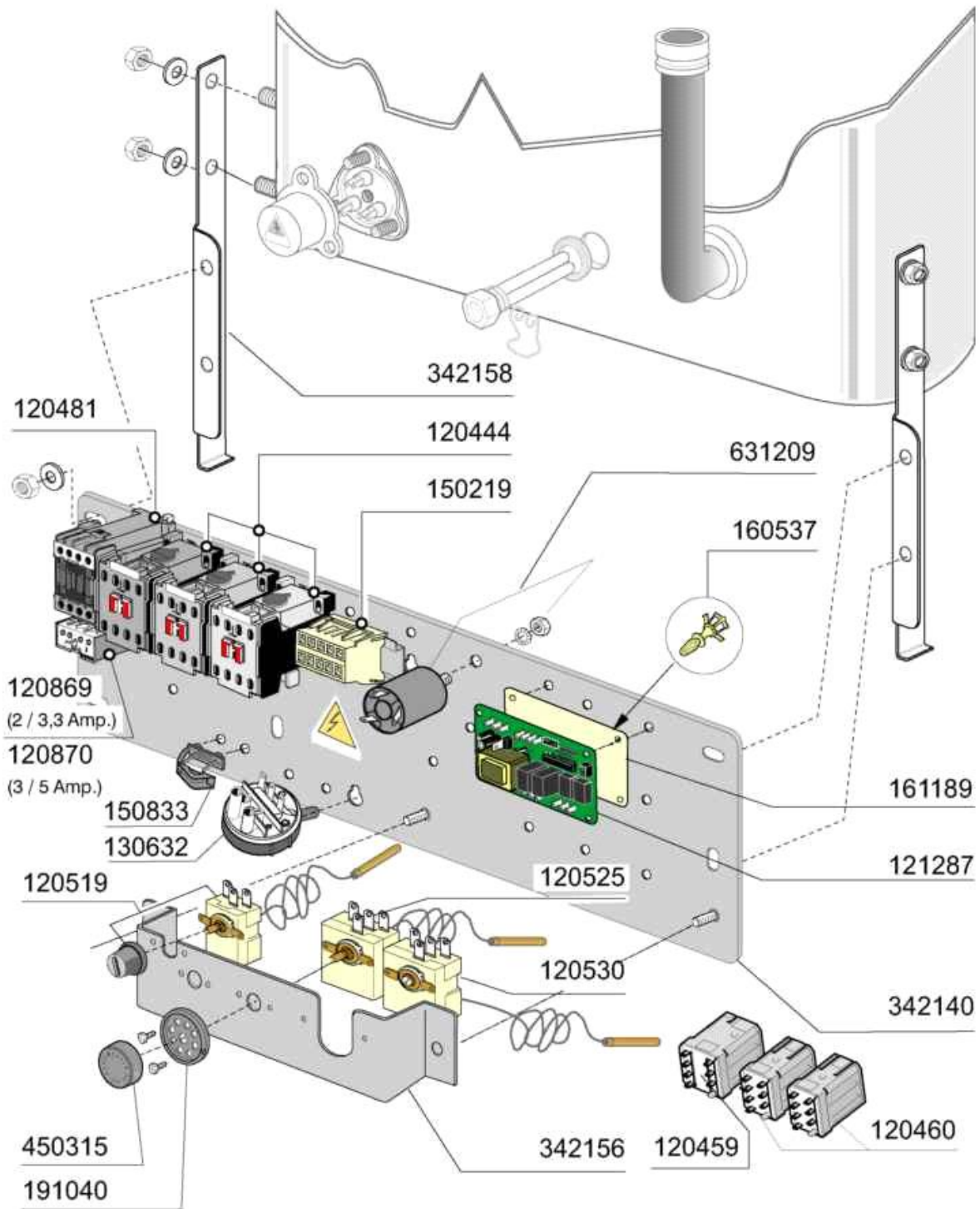
05 - 2013 M.SA.

Code	Description	Price (€)
100795	PUMP 2HP 380/3/50HZ	
100797	PUMP HP 1,5 380/3/50	
100802	PUMP HP 0,3 230V-50HZ	
100889	PUMP HP 0,3 440V-60HZ	
100897	PUMP HP 0,3 230V-60HZ	
100918	PUMP HP 1 230V/1	
441111	PUMP FEET 25X25XM6	
630136	PUMP VOLUTE LGB ZF131DX	
630138	VOLUTE FOR PUMP LC	
630249	PUMP FLANGE ZF131 DX	
630252	BACK PLATE PUMP LC	
630253	FAN HOUSING FOR PUMP 100797	
630260	FLANGE	
630261	COVER	
630306	PUMP FAN IMPELLOR FI HP.2-3	
630333	FAN	
630411	O-RING PUMP FI HP 2-2,7	
630427	O-RING FOR PUMP ZF131DX	
630436	PUMP JOINT	
630501	SEAL FOR PUMP HP 2-3-3,2	
630533	PUMP SEALS WASH PUMP ZF131DX	
630538	SEAL LGBZF131DX	
631202	CONDENSER 16 MF 450V	
631216	CAPACITOR 6.3 MF 450V	
631618	PUMP IMPELLER F HP2-D.116,5	
631647	IMPELLER D.100-60HZ-1204/5	
631653	PUMP IMPELLER 1,5 HP 50HZ 1241	
631654	PUMP IMPELLER 1,5HP 50HZ 1241	
631698	PUMP IMPELLER ZF131DX	
631704	PUMP IMPELLER ZF131DX	
631711	IMPELLER LGB ZF131DX 60HZ D.66	
631723	PUMP IMPELLER	



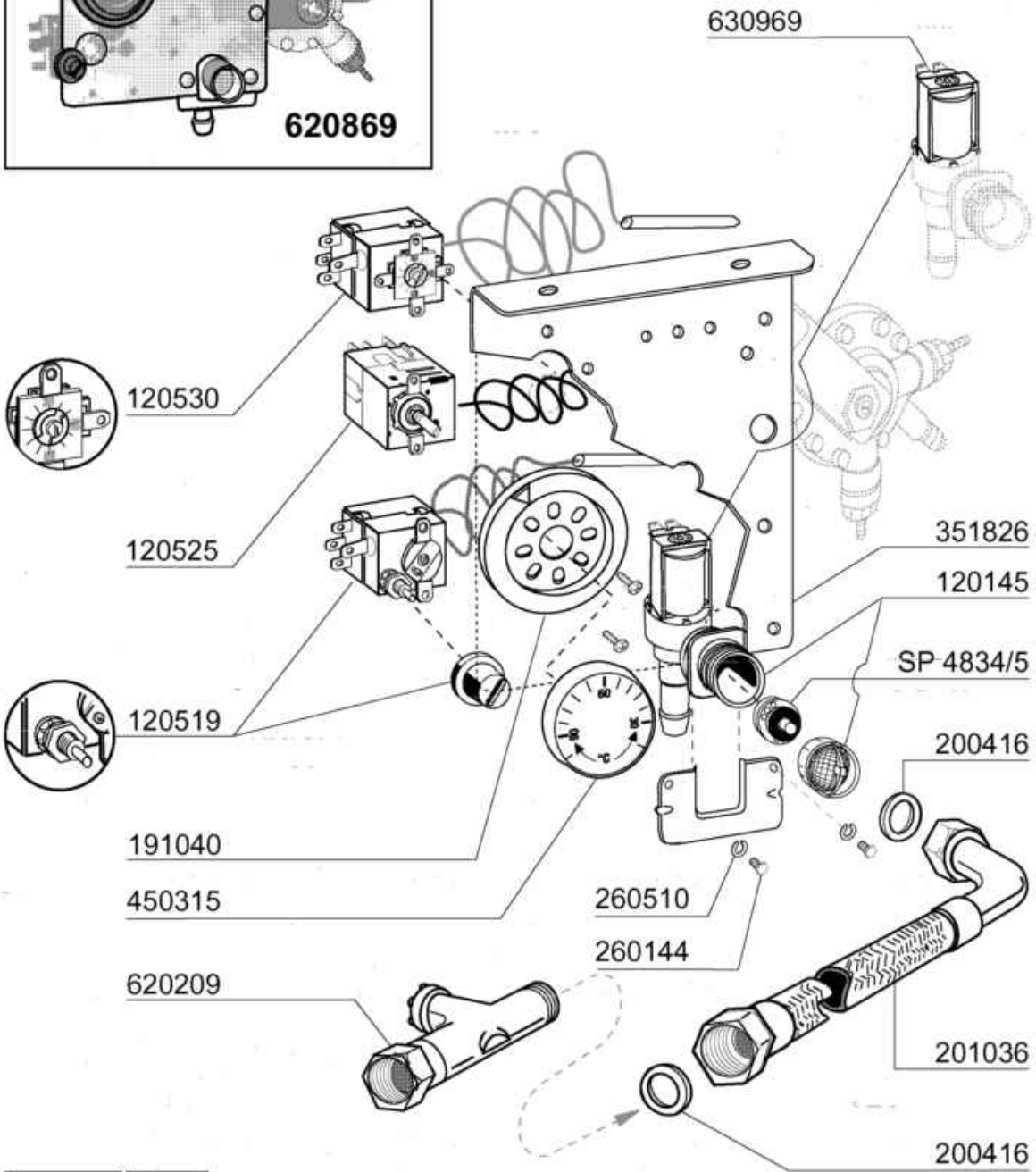
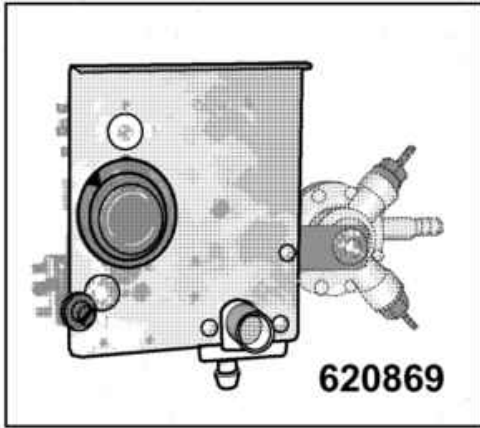
05 2005 | S. AG.

Code	Description	Price (€)
113078	CONTROL BOX	
120751	4 POLE SWITCH 16A	
130157	GREEN LED FOR BR-BC-C-SERIES -	
130196	GREEN LAMP	
130444	SWITCH "START CYCLE" F	
130447	CYCLE START SELECTOR FOR C-SER	
130707	TRANSPARENT LENS COVERS (C-SER	
160733	BLANK PLATES	
260129	SCREW TE M 5X20	
260426	M6 STAINLESS STEEL NUT	
260511	GROWER WASHER D.5	
260538	WASHER 18X6X1,5 ST/ST	
290821	DISTANCE PIECE FOR SWITCH	
351870	FRONT PANEL LC2004	
390306	CABLE	
440817	SNAP RING LSCB/1853/17/00	
450343	BLUE SWITCH	
461352	LC2004 PLATE	
463163	LC700 PLATE	
463164	LC900 PLATE	
463165	LC1200 PLATE	



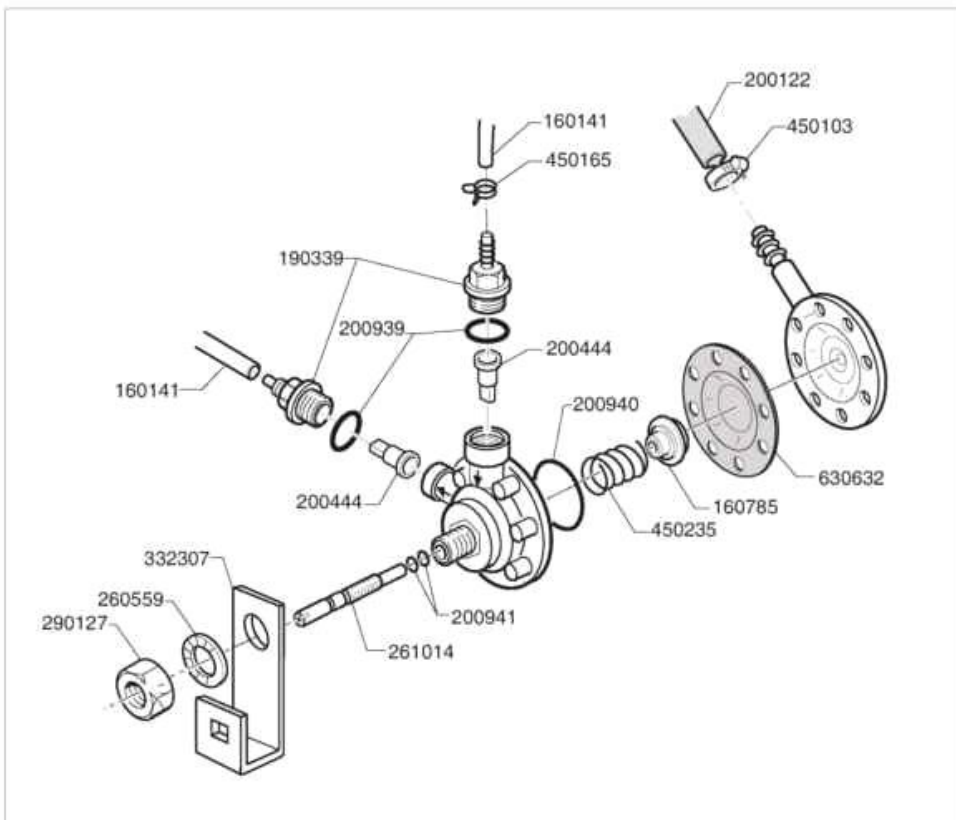
07 - 2012 | M.S.A.

Code	Description	Price (€)
120444	CONTACTOR 9A 220V 50HZ	
120459	AUXIL.RELE 16A 220V	
120460	RELAY 16A 220V	
120481	CONTACTOR 9A-230V 50/60HZ	
120519	SAFETY THERMOSTAT 95-125°	
120525	BOOSTER THERMOSTAT 2 TEMPERAT.	
120530	THERMOSTAT 0-90°	
120869	OVERLOAD RELAY 2/3,3	
120870	OVERLOAD RELAY 3/5	
121287	ELECTRONIC TIMER	
130632	PRESSURE SWITCH 1L 75-45	
150219	TERMINAL BLOCK 5P MMQ165VD26	
150833	CABLE HOLDER BC/BR	
160537	ELECTRONIC CARD SPACER	
161189	COVER	
191040	FRAME F.THERMOSTAT KNOB	
342140	SUPPORT	
342156	LOWER WASH ARM SUPPORT	
342158	LOWER WASH ARM SUPPORT	
450315	KNOB F. THERMOSTAT 90°	
631209	ANTI-NOISE FILTER	



04 - 2004 | S. AG.

Code	Description	Price (€)
120145	SOLENOID VALVE 12 LT 1 WAY	
120519	SAFETY THERMOSTAT 95-125°	
120525	BOOSTER THERMOSTAT 2 TEMPERAT.	
120530	THERMOSTAT 0-90°	
191040	FRAME F.THERMOSTAT KNOB	
200416	GASKET D. 3/4"	
201036	INLET HOSE 2 MT	
260144	SCREW TE 4X6	
260510	GROWER WASHER D.4	
351826	BRACKET	
450315	KNOB F. THERMOSTAT 90°	
620209	INLET WATER FILTER	
620869		
630969	COIL S4216 220/50HZ	
SP4834/5	SOLENOID VALVE REGULATOR	



Code	Description	Price ()
160141	HOSE 4X7	
160785	GUIDE FOR SPRING RINSE AID INJ	
190339	RINSE AID INJECTOR CONNECTION	
200122	HOSE 11X19	
200444	SUCTION VALVE RINSE INJECTOR	
200939	OR GASKET	
200940	GASKET	
200941	OR GASKET	
260559	FLAT WASH A2D.12 DIN6798	
261014	SCREW	
290127	DISPENSER FIXING NUT	
332307	BRACKET	
450103	CLAMP FE ZN. 13-20 H=9	
450165	ELASTIC HOSE CLIP 7,3-7,8	
450235	SPRING RINSE AID INJECTOR	
620879	RINSE AID INJECTOR	
630632	DIAPHRAGM RINSE INJECTOR HVD	



FOODSERVICE EQUIPMENT SPARES LTD

UNIT 4 SANDBROOK PARK, SANDBROOK WAY, ROCHDALE, OL11 1RY

01706 353 633

SALES@FOODSERVICESPARES.COM



WWW.FOODSERVICESPARES.COM