



TECHNICAL **DIAGRAMS**

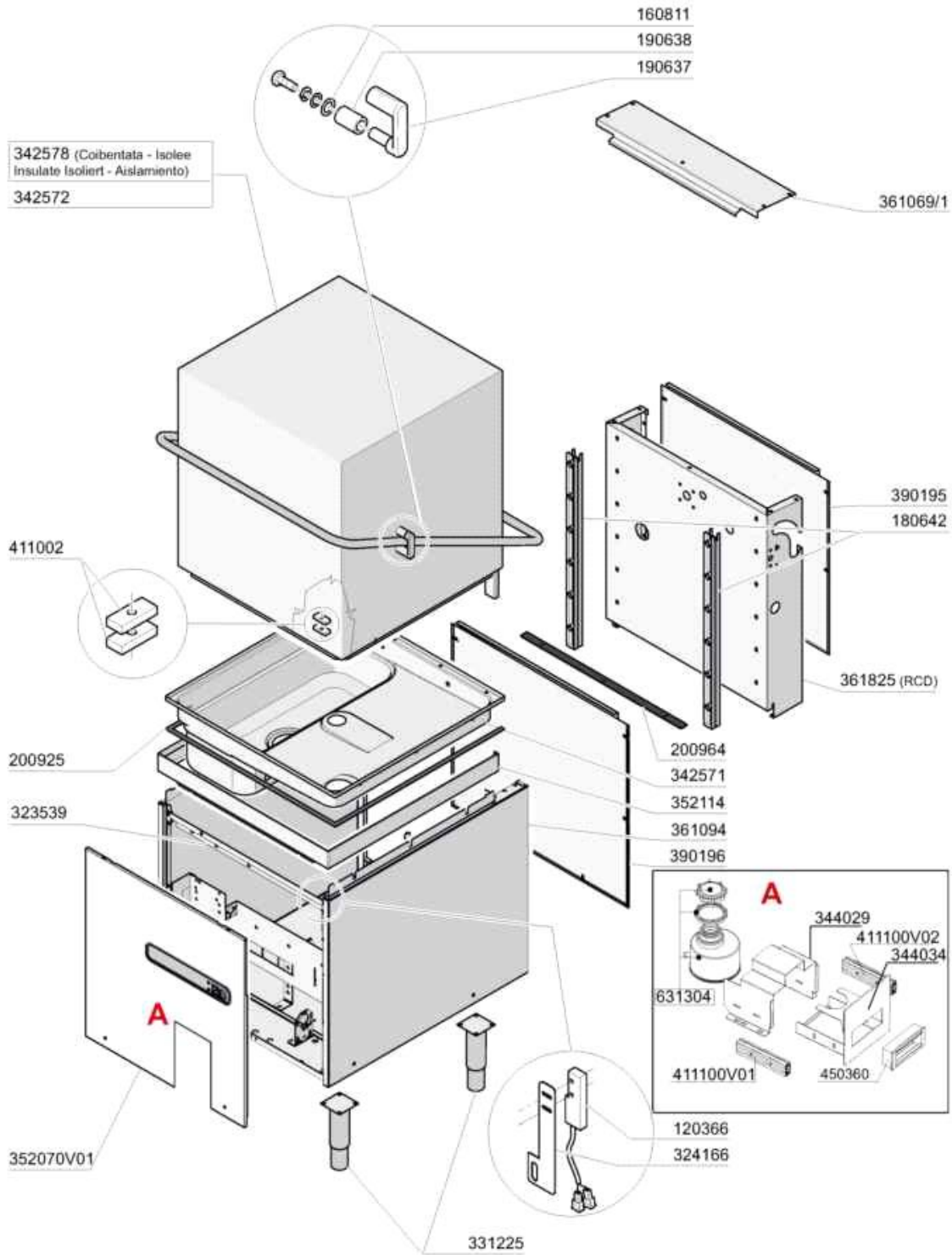


LC411MA DP+CRC

01706 353 633

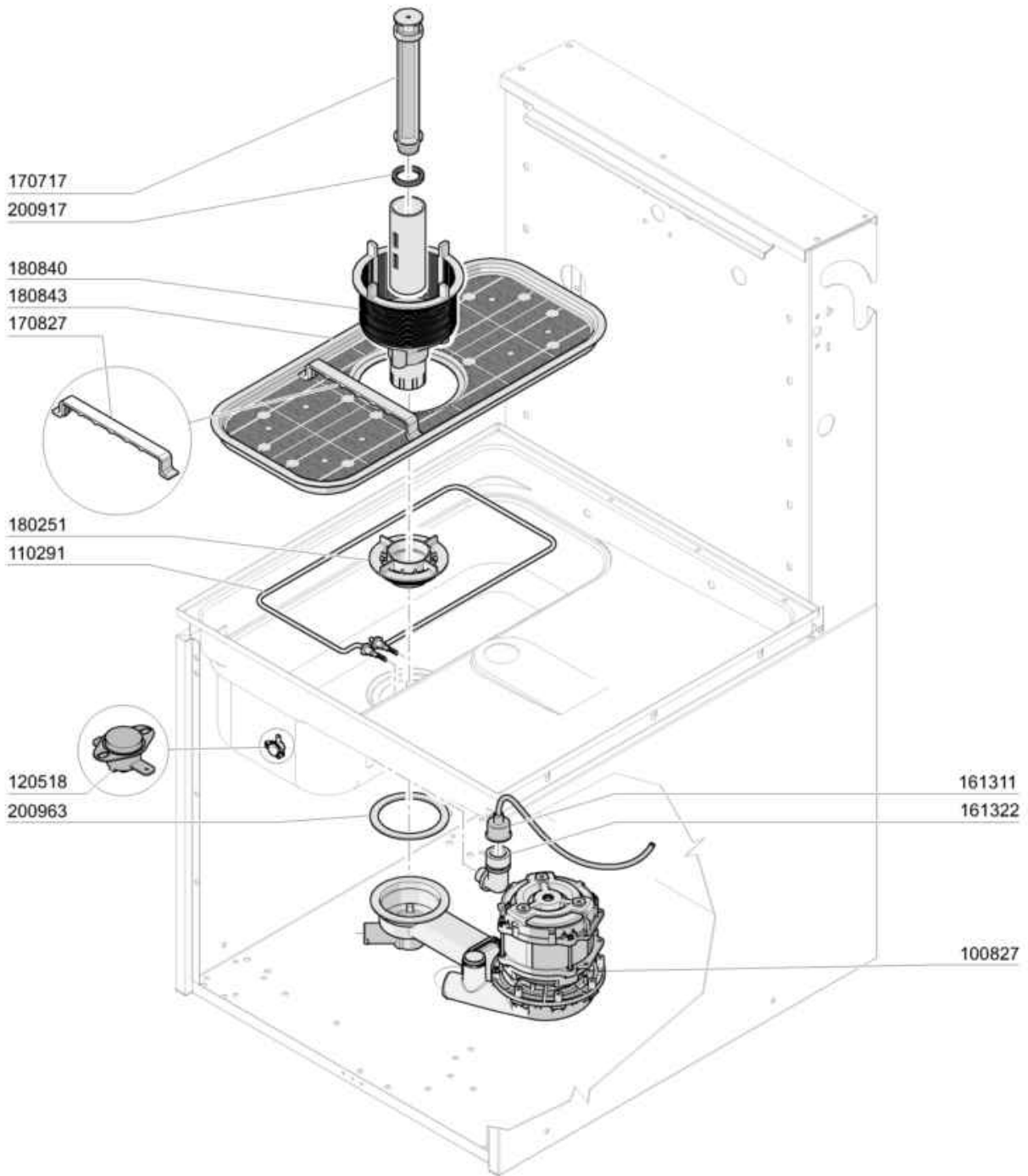
WWW.FOODSERVICESPARES.COM

- 1 Hood
- 2 Tank
- 3 Handle
- 4 Wash/Rinse column
- 5 Rinse
- 6 Wash arm
- 7 Wash arm
- 8 Pump
- 9 Control box
- 10 Detergent dispenser
- 11 Rinse aid injector
- 12 Drain pump kit
- 13 CRC
- 14 CRC2



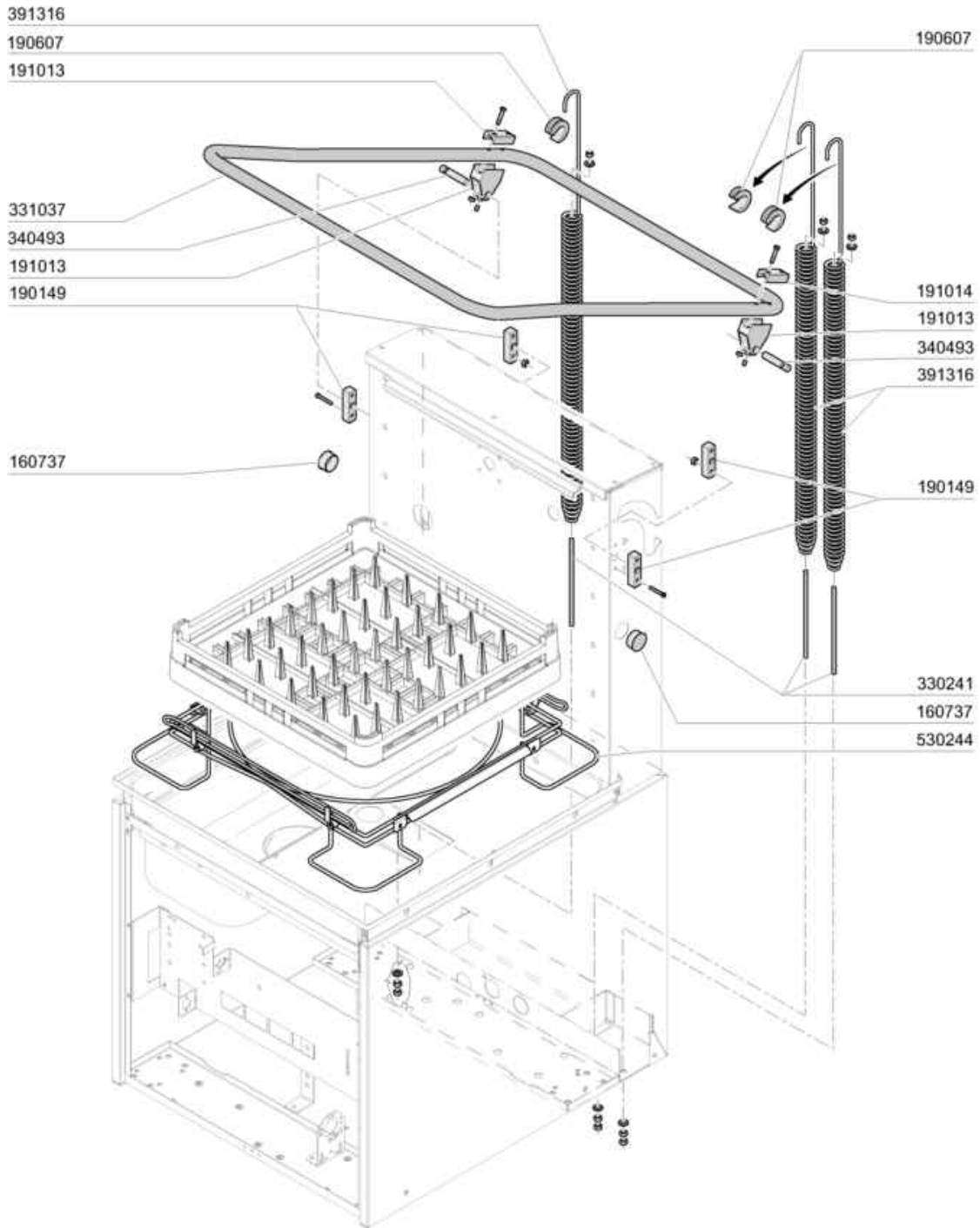
03-2017 M. S.

Code	Description	Price (€)
120366	MAGN.SENSOR	
160811	WASHER F2 18X8.5X1 ALGOF	
180642	GUIDE	
190637	GUIDE FOR DOOR "C"	
190638	ROLLER FOR "C" DOOR GUIDE	
200925	GASKET	
200964	GASKET 618X14 SP.2	
323539	BRACKET	
324166	MICROSWITCH BRACKET	
331225	ADJUSTABLE FEET	
342571	TANK	
342572	HOOD	
342578	INSULATED HOOD	
344029	COVER FOR SALT CONTAINER CHEST	
344034	CASSETTO X CONT.SALE F WRAS	
352070V01	FRONT PANE LC411A RCD C5 WRAS	
352114	FRONT PANEL	
361069/1	COVER	
361094	BASEMENT	
361825	BACK PANEL RCD	
390195	UPPER BACK PANEL	
390196	LOWER BACK PANEL	
411002	PERMANENT MAGNET 24X12	
411100V01	CHEST RAIL	
411100V02	CHEST RAIL	
450360	CHEST HANDLE	
631304	SALT CONTAINER	



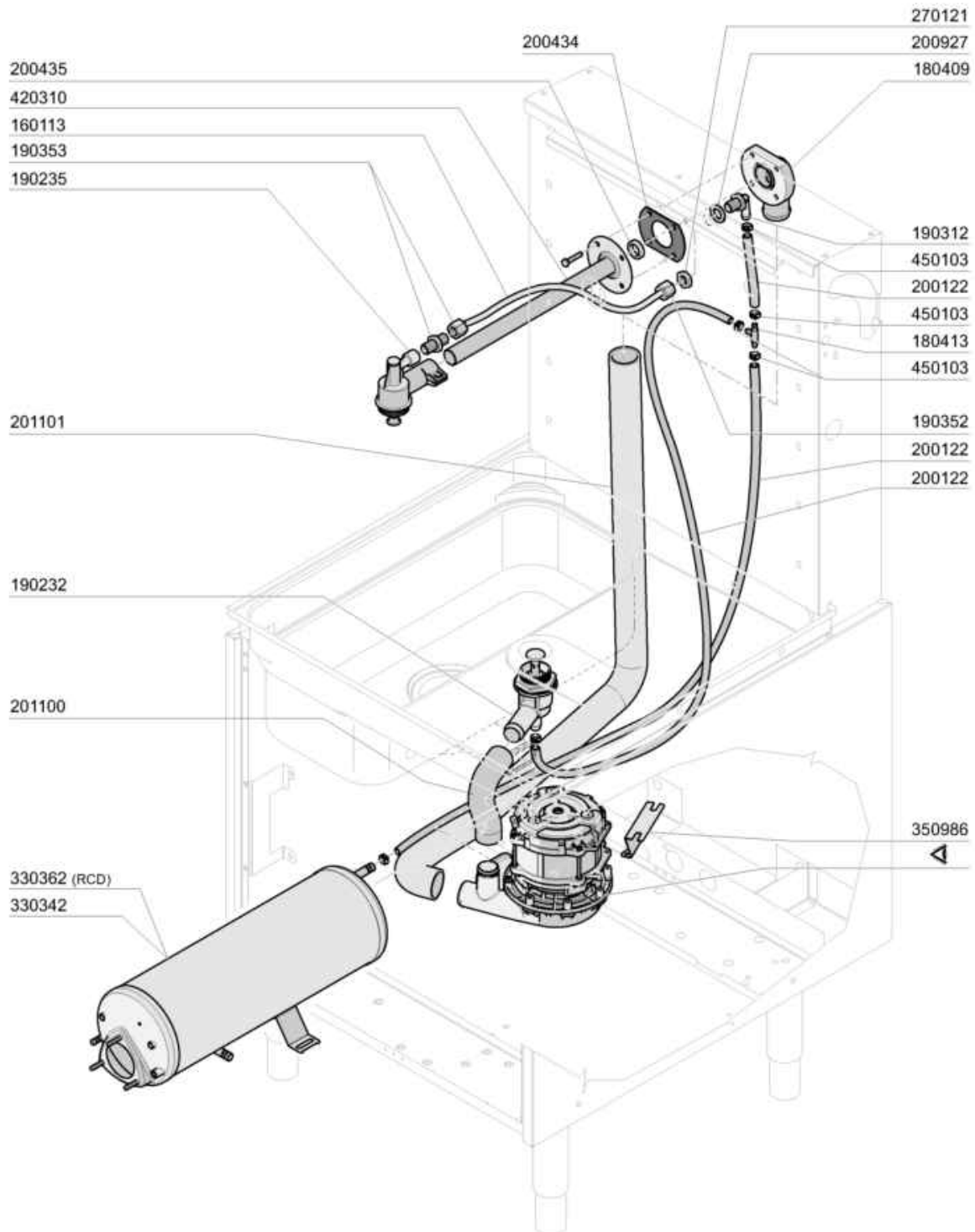
11 - 2010 M. S.

Code	Description	Price (€)
100827	WASH PUMP HP0,6 FC2006	
110291	HEATER 2000W	
120518	TANK THERMOSTAT FOR R50	
161311	HOSE FOR AIR CHAMBER BC-BR-AC9	
161322	AIR TRAP FC2006	
170717	OVERFLOW PIPE FC2006	
170827	FILTER HANDLE	
180251	FIXING NUT FOR PUMP FC2006	
180840	FCM FILTER	
180843	FILTER	
200779	DRAIN HOSE FOR BR-BC-FC43	
200917	GASKET FOR OVERFLOW PIPE BR-BC	
200963	JOINT 110X88X3	
450105	CLAMP FE ZN. 26-38 H=12,2	



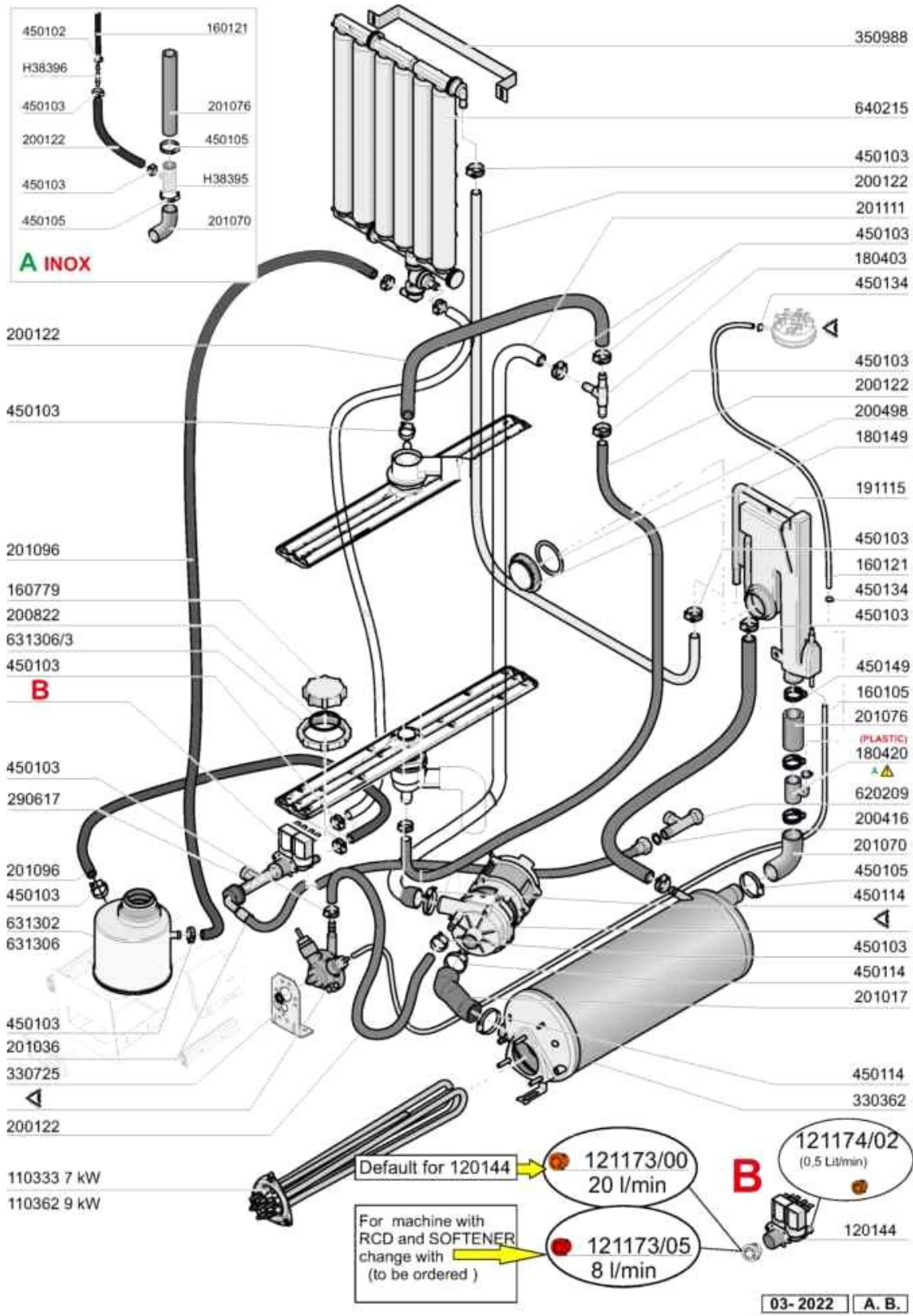
11 - 2010 M. S.

Code	Description	Price (€)
160737	PLUG HEYCO D.34,9	
190149	REINFORCEMENT FOR HANDLE SUPP.	
190607	HANDLE BUSH C30-70	
191013	HINGE F. SUPPORT C30-C70	
191014	FLANGE F. HANDLE C30-70	
330241	SPRING ROD	
331037	HANDLE C95-155-165 ISOLATED	
340493	PIN F. HINGE C30	
391316	SPRING FOR HANDLE C85/140-G75	
530244	RACK SUPPORT	

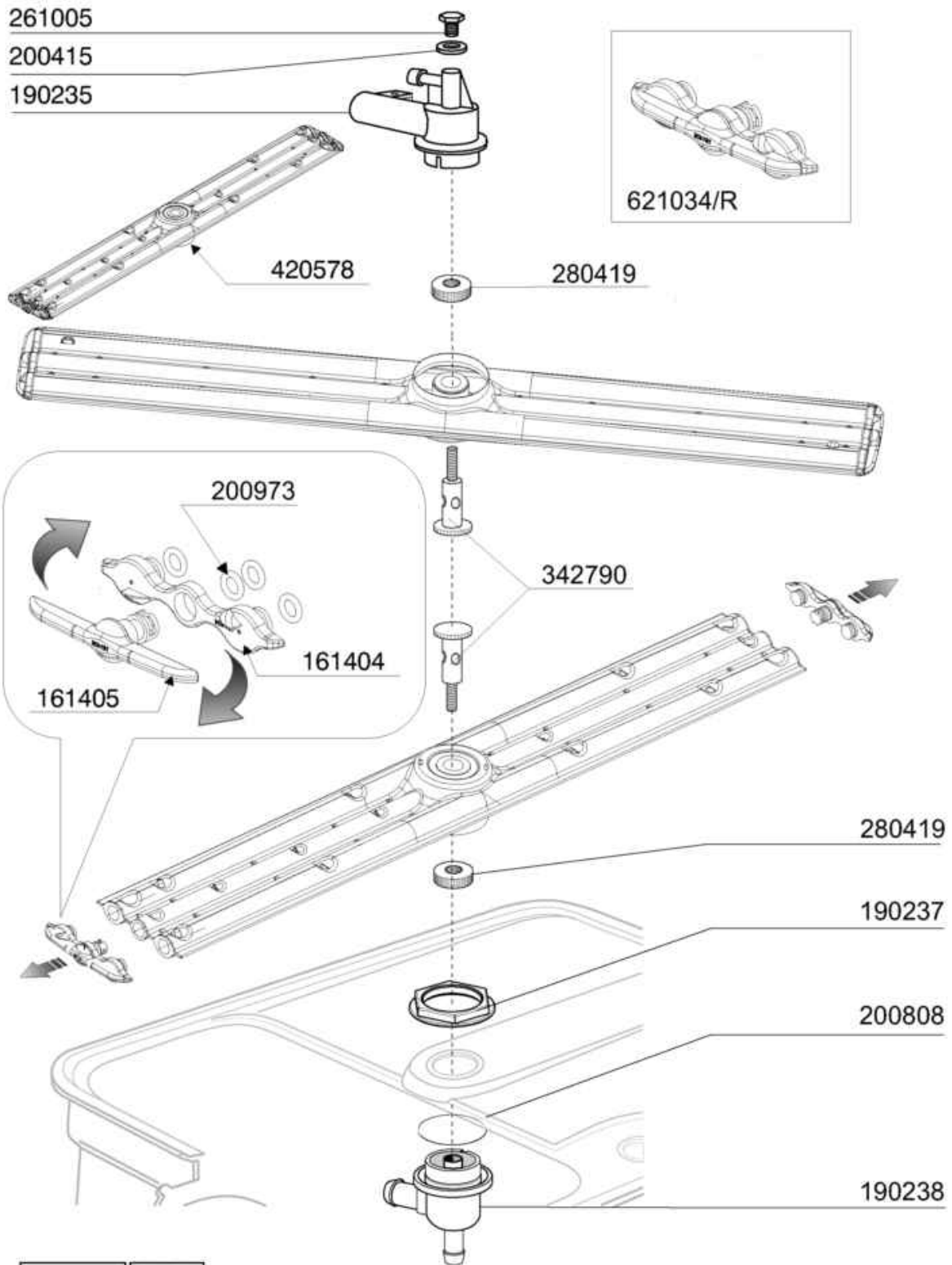


09 - 2012 M. S.

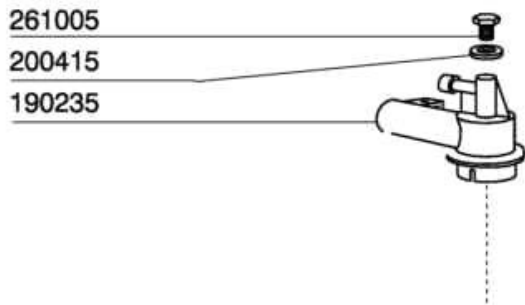
Code	Description	Price (€)
160113	TUBE IN POL. RETIC. 12 EST	
180409	UPPER CONNECTOR F. WASHING C30	
180413	TEE NIPPLE D.11,5 - RINSE ASSE	
190232	LOWER ARM SUPPORT FC2006	
190235	UPPER ARM SUPPORT	
190312	NIPPLE CONNECTION 1/2"	
190352	CONNECTION	
190353	CONNECTION	
200122	HOSE 11X19	
200434	GASKET CONNECTION C30 R50	
200435	GASKET WASH.F2 D.40 C30-70	
200927	GASKET FOR AIR TRAP	
201100	OUTLET HOSE	
201101	OUTLET HOSE	
270121	NUT FOR AIR TRAP	
330342	BOILER C1000/1300-FC-LC	
330362	BOOSTER FOR BREAK TANK	
350986	PUMP SUPPORT	
420310	LOW./UPP.WASH PIPE C30 - 70	
450103	CLAMP FE ZN. 13-20 H=9	



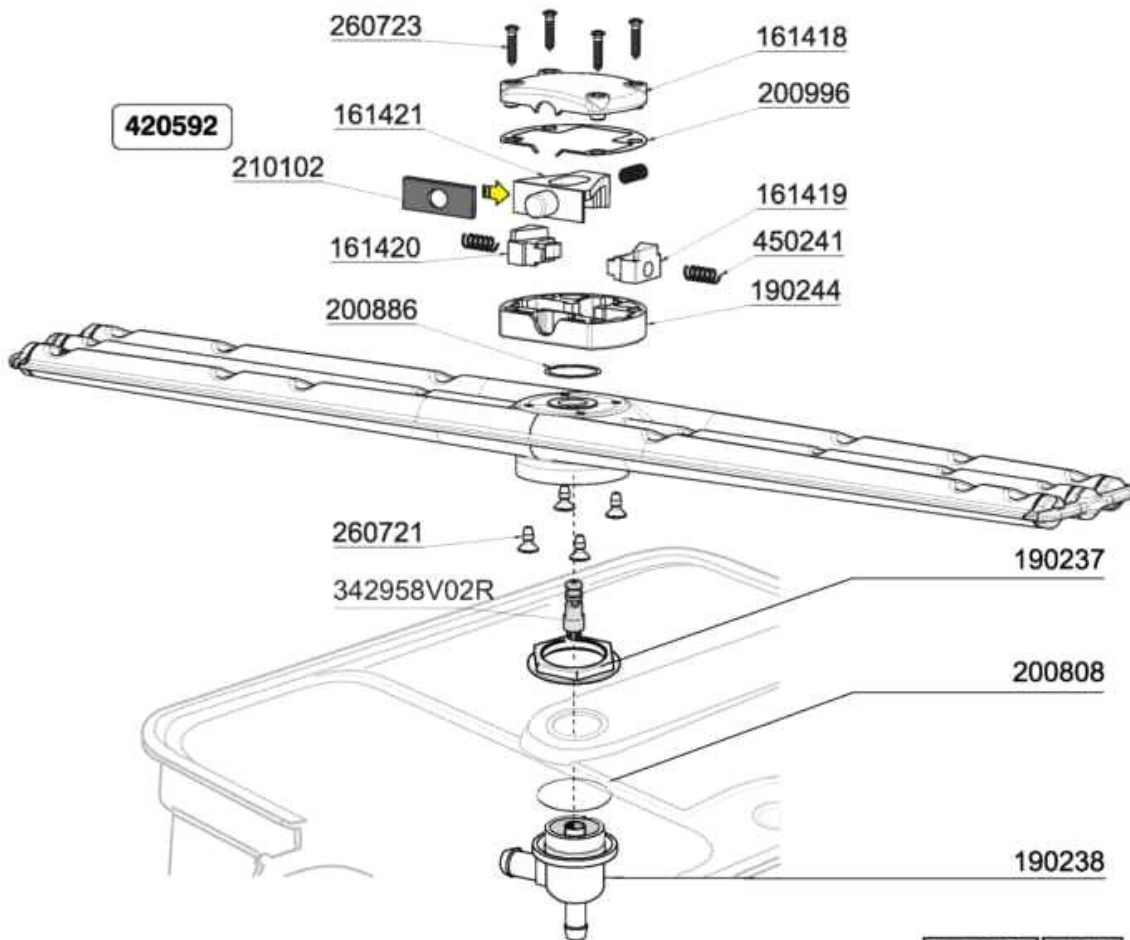
Code	Description	Price (€)
110333	HEATER 7KW 230/400V	
110362	HEAT.ELEMENT 9000W 220/380V	
120144	SOLENOID VALVE FCA 20 LT TYPE	
121173/00	FLUX REGULATOR	
121173/05	FLUX REGULATOR 8 l/min RED	
121174/02	FLOW REGULATOR ORANGE 0,5L/MIN	
160105	INJECT.INLET RED HOSE D.6X4	
160121	HOSE EPDM D. 5 X 9	
160779	PLUG	
180149	PLASTIC NUT	
180403	TEE-NIPPLE F2-F300-B10-11	
180420	TEE-NIPPLE	
191115	BREAK TANK	
200122	HOSE 11X19	
200416	GASKET D. 3/4"	
200498	GASKET	
200822	PLUG GASKET OF SALT CONTAINER	
201017	RINSE PUMP INLET HOSE LF/FC BT	
201036	INLET HOSE 2 MT	
201070	HOSE	
201076	HOSE	
201096	CONNECTION HOSE	
201111	HOSE	
290617	DOUBLE VALVE 1/2"	
330362	BOOSTER FOR BREAK TANK	
330725	STANDARD BRACKET F.SOLEN.VALV	
350988		
450102	CLAMP FE ZN 11-17 H=9	
450103	CLAMP FE ZN. 13-20 H=9	
450105	CLAMP FE ZN. 26-38 H=12,2	
450114	CLAMP FE ZN.22-32 H=12,2	
450134	ELASTIC HOSE CLIP D.9,3/8,8	
450149	CLAMP D.34,6 X 36,4	
620209	INLET WATER FILTER	
631302	SALT CONTAINER	
631306	SALT CONTAINER 1KG	
631306/3	SAL CONTAINER NUT	
640215	WATER SOFTENER GF70	
H38395	TEE AIR GAP INOX (38395)	
H38396	STRAIGHT FITTING	



Code	Description	Price ()
161404	PLUG	
161405	PLUG	
190235	UPPER ARM SUPPORT	
190237	NUT	
190238	LOWER TEE WASH/RIN ARM	
200415	AIR TRAP GASKET -F2 18,5X10X3	
200808	OR GASKET 3,53X50,80X57,86	
200973	JOINT OR 1.78x5.28	
261005	SCREW F. TEE UP.WASH F2-B41	
280419	LOCK NUT	
342790	RINSE SUPPORT	
420578	REPLACED BY 420592+342958V02R	
621034/R	WRIS ARM PLUG	

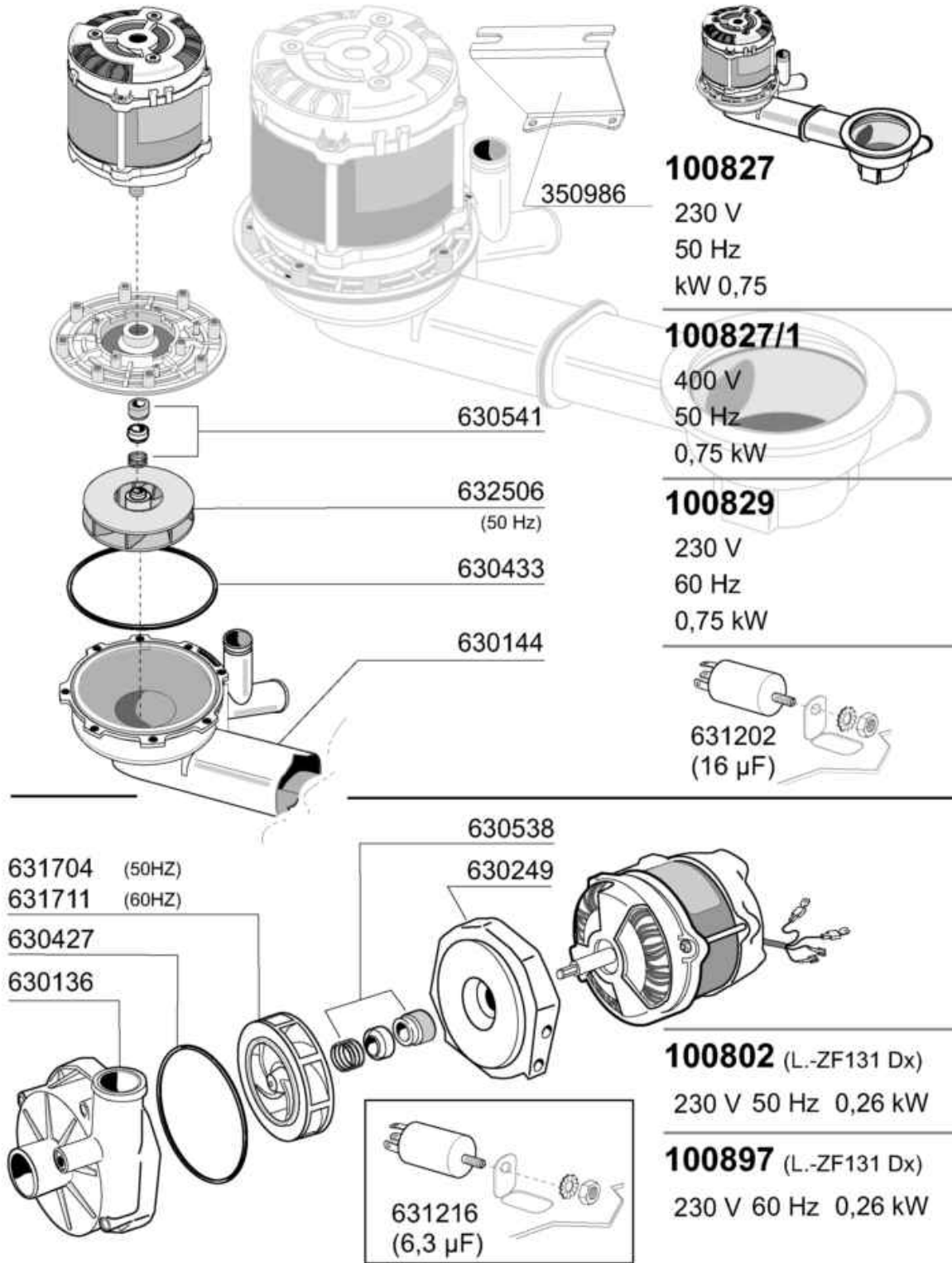


Dalla Matricola - From serial number
A partir da la matr. - Ab Seriennr.
Despues la matr.
....2770/03/17



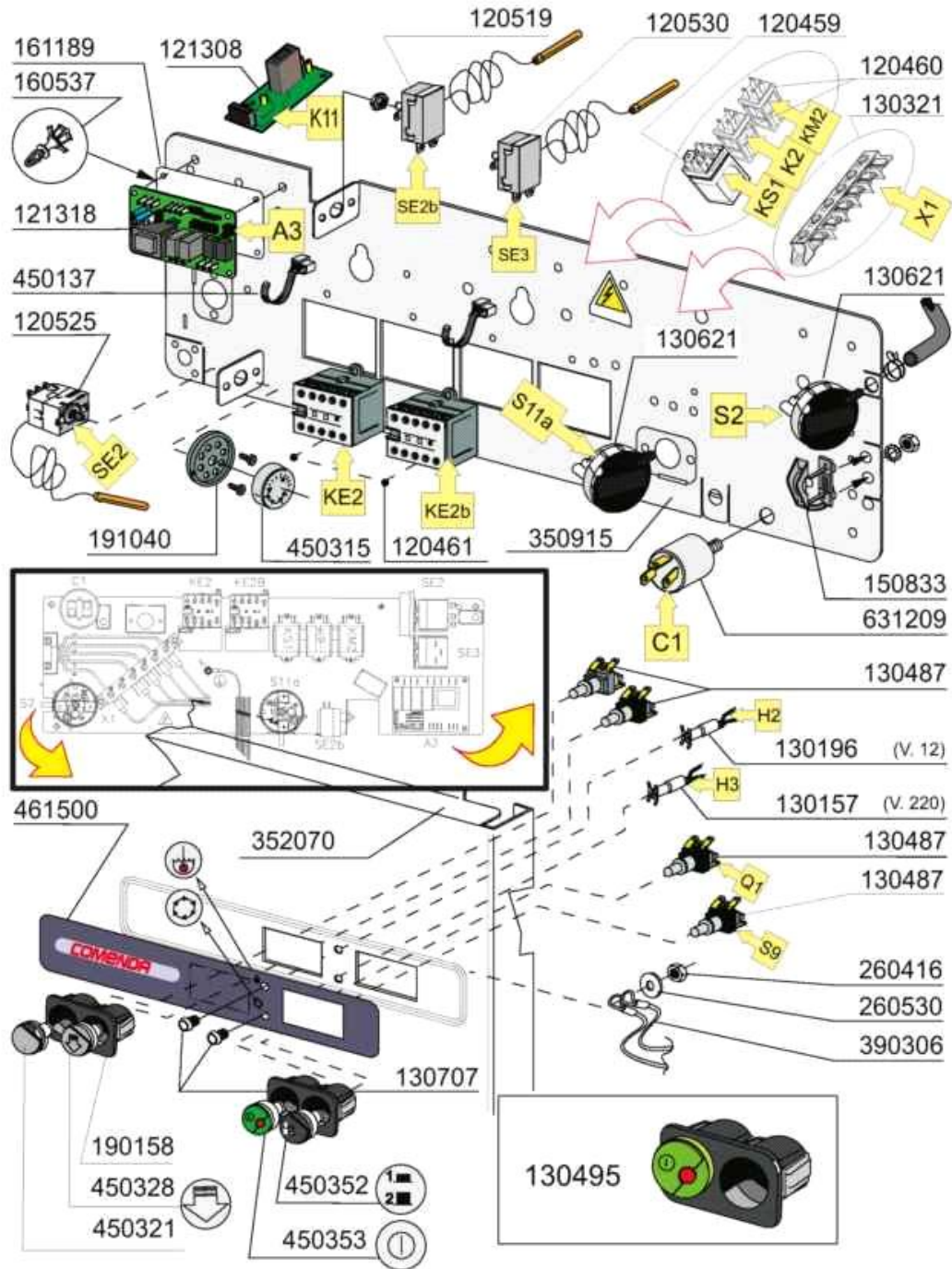
03-2017 M. SA.

Code	Description	Price (€)
161418	WASH ARM COVER	
161419	WASHARM RIGHT CLAMP	
161420	WASHARM LEFT CLAMP	
161421	WASHARM CLAMP RELEASE	
190235	UPPER ARM SUPPORT	
190237	NUT	
190238	LOWER TEE WASH/RIN ARM	
190244		
200415	AIR TRAP GASKET -F2 18,5X10X3	
200808	OR GASKET 3,53X50,80X57,86	
200886	JOINT D.20X1	
200996	SYLICON JOINT	
210102	SYLICON FLAT JOINT	
260721	SCREW TC 3,5X9,5	
260723	SCREW D3,5X16	
261005	SCREW F. TEE UP.WASH F2-B41	
342958V02R	COMPL. SHAFT F.WRIS ARM 420592	
420592		
450241	CLAMP SPRING	



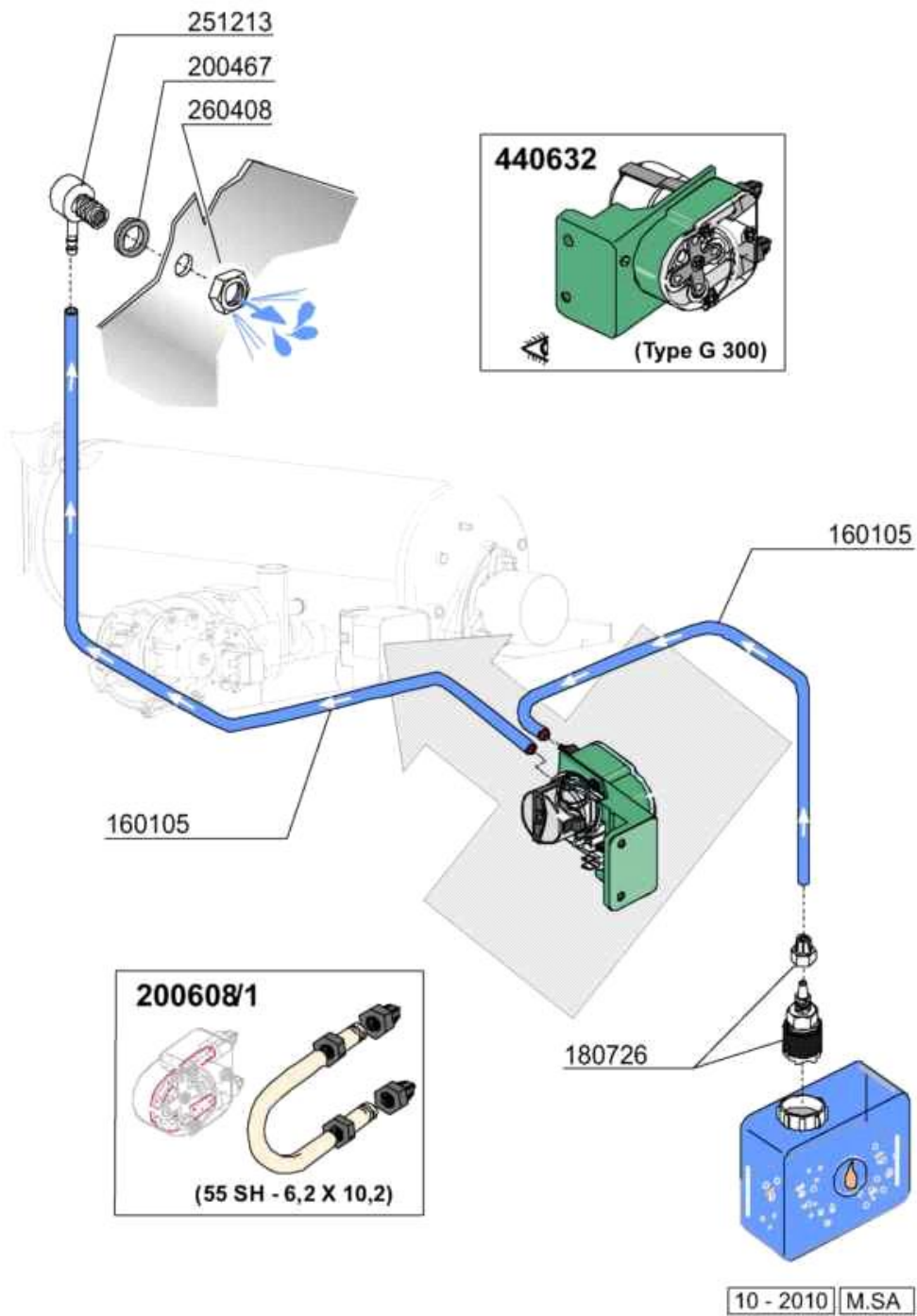
10 - 2010 M. SA.

Code	Description	Price (€)
100802	PUMP HP 0,3 230V-50HZ	
100827	WASH PUMP HP0,6 FC2006	
100827/1	PUMP HP 0,6 LGB FC06 400/3/50	
100829	PUMP HP 0,6 LGB FC06 60HZ	
100897	PUMP HP 0,3 230V-60HZ	
350986	PUMP SUPPORT	
630136	PUMP VOLUTE LGB ZF131DX	
630144	PUMP VOLUTE	
630249	PUMP FLANGE ZF131 DX	
630427	O-RING FOR PUMP ZF131DX	
630433	GASKET FOR PUMP 100827	
630538	SEAL LGBZF131DX	
630541	SEAL FOR PUMP 100827	
631202	CONDENSER 16 MF 450V	
631216	CAPACITOR 6.3 MF 450V	
631704	PUMP IMPELLER ZF131DX	
631711	IMPELLER LGB ZF131DX 60HZ D.66	
632506	PUMP IMPELLER 100827 50HZ	

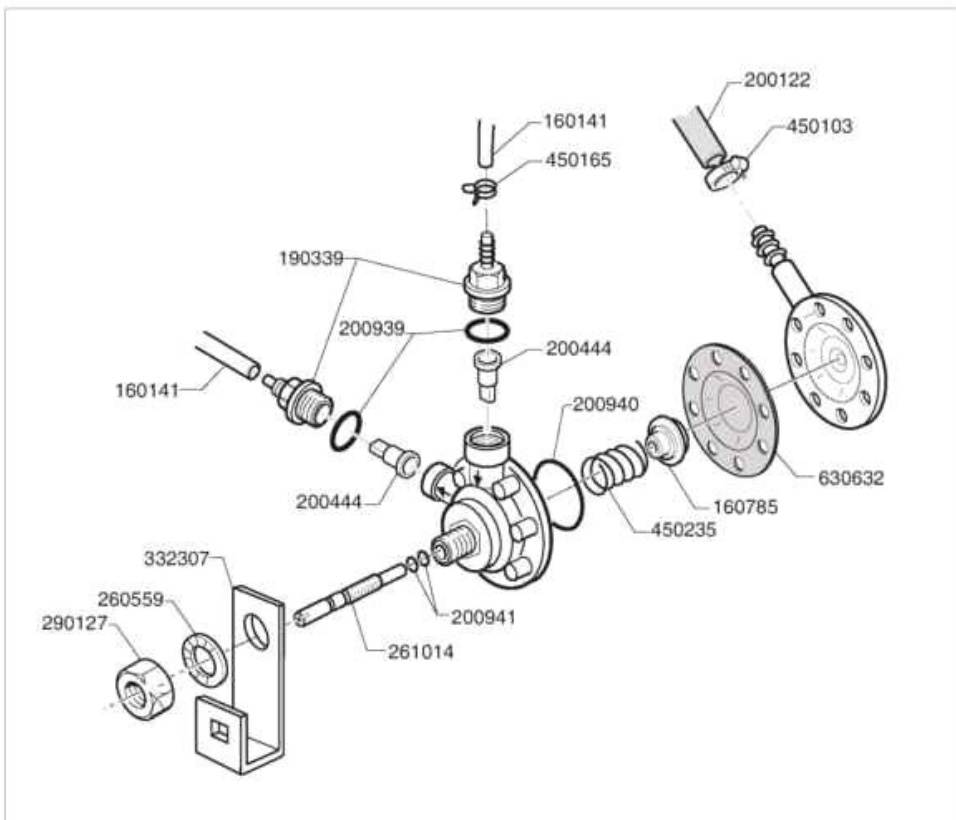


01 - 2020 A. B.

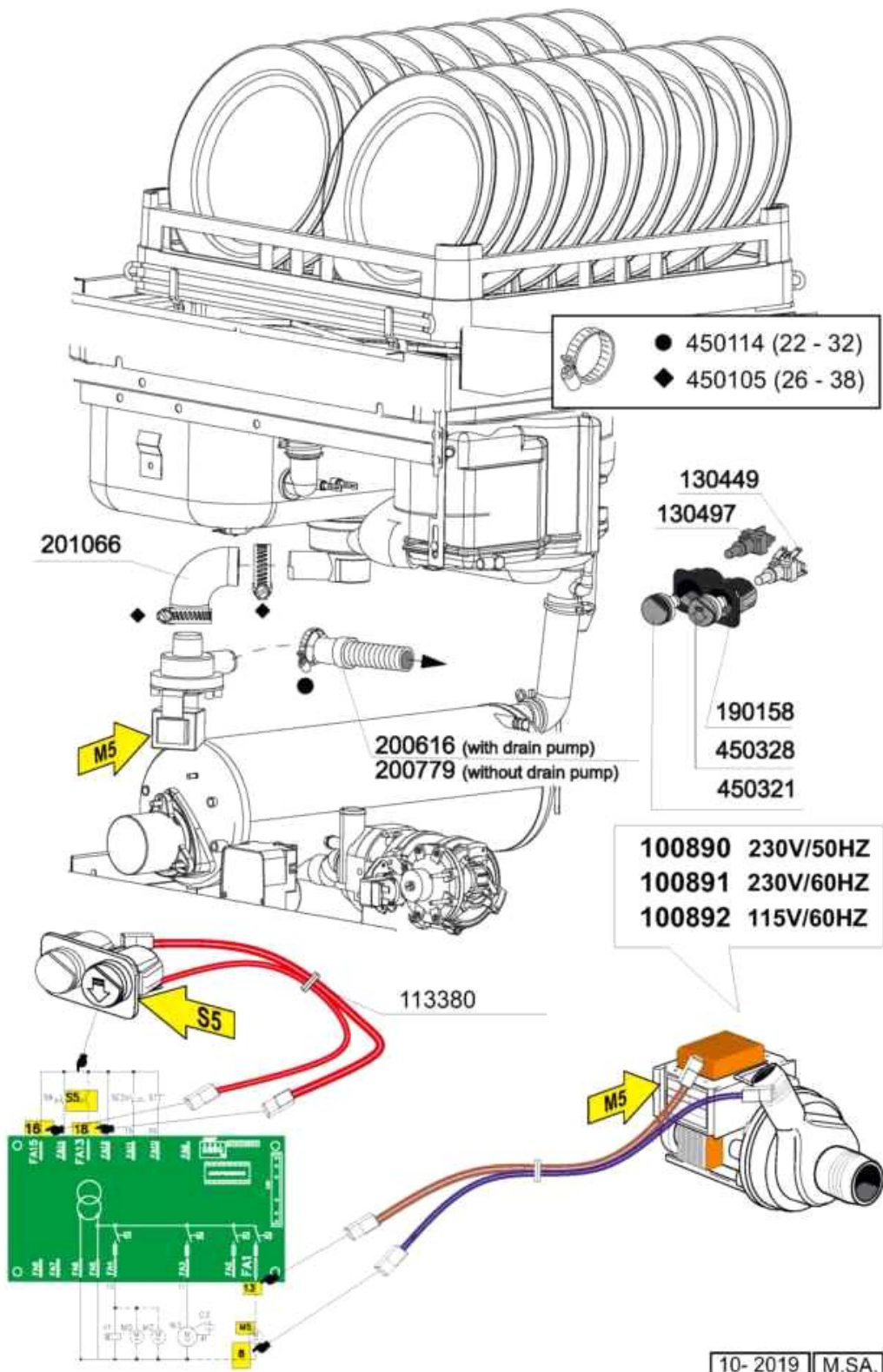
Code	Description	Price (€)
120459	AUXIL.RELE 16A 220V	
120460	RELAY 16A 220V	
120461	CONTACTOR ABB B6-30-01 220V	
120519	SAFETY THERMOSTAT 95-125°	
120525	BOOSTER THERMOSTAT 2 TEMPERAT.	
120530	THERMOSTAT 0-90°	
121308	PCB	
121318	PCB F3M-MA_F4M-MA	
130157	GREEN LED FOR BR-BC-C-SERIES -	
130196	GREEN LAMP	
130321	JUNCTION BOX 6 CONNECTORS	
130487	SWITCH	
130495	SWITCH ON/OFF	
130621	PRESSURE SWITCH FOR BC HR 45/2	
130707	TRANSPARENT LENS COVERS (C-SER	
150833	CABLE HOLDER BC/BR	
160537	ELECTRONIC CARD SPACER	
161189	COVER	
190158	SUPPORT	
191040	FRAME F.THERMOSTAT KNOB	
260416	STAINLESS STEEL NUTS M6	
260530	STAINL.ST WASHER 7X22X2	
350915	CONTROL PANEL SUPPORT	
352070	FRONT PANEL LC411	
390306	CABLE	
450137	COLLAR CONNECTION WITH BASE 31	
450315	KNOB F. THERMOSTAT 90°	
450321	GREY COVER FOR PUSH BUTTON BR-	
450328	DRAIN SWITCH	
450352	PUSH BUTTON "CYCLE"	
450353	GREEN ON/OFF SWITCH	
461500	PLATE LC411M	
631209	ANTI-NOISE FILTER	



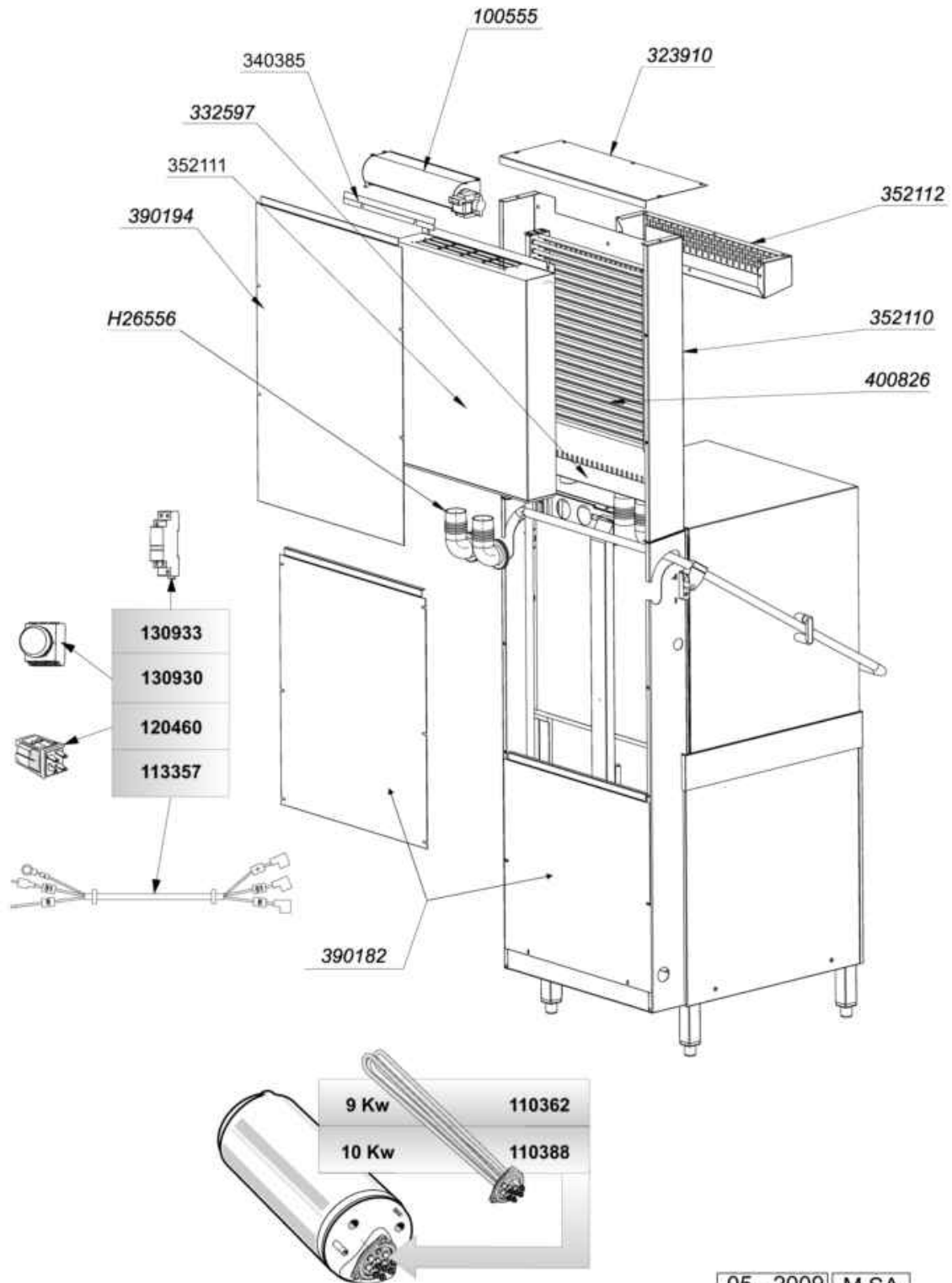
Code	Description	Price ()
160105	INJECT.INLET RED HOSE D.6X4	
180726	STREINER FOR RINSE AID INJECTO	
200467	DUTRAL GASKET F. AIR TRAP	
200608/1	HOSE FOR DISPENSER GERMAC G300	
251213	INJECTOR S/S FOR DETERGENT IN	
260408	S/S NUTS D.12	
440632	DETERGENT INJECTOR	



Code	Description	Price ()
160141	HOSE 4X7	
160785	GUIDE FOR SPRING RINSE AID INJ	
190339	RINSE AID INJECTOR CONNECTION	
200122	HOSE 11X19	
200444	SUCTION VALVE RINSE INJECTOR	
200939	OR GASKET	
200940	GASKET	
200941	OR GASKET	
260559	FLAT WASH A2D.12 DIN6798	
261014	SCREW	
290127	DISPENSER FIXING NUT	
332307	BRACKET	
450103	CLAMP FE ZN. 13-20 H=9	
450165	ELASTIC HOSE CLIP 7,3-7,8	
450235	SPRING RINSE AID INJECTOR	
620879	RINSE AID INJECTOR	
630632	DIAPHRAGM RINSE INJECTOR HVD	

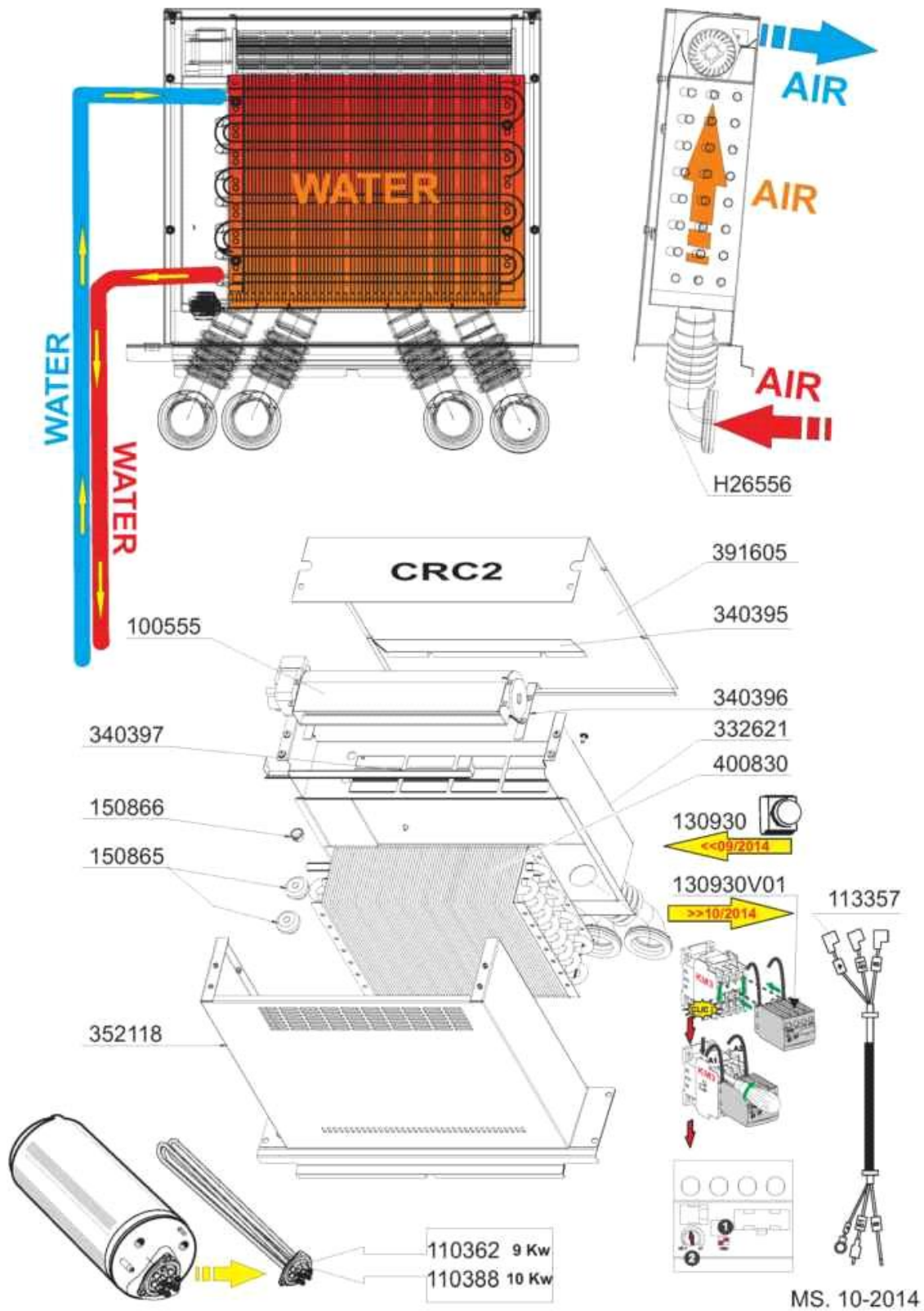


Code	Description	Price ()
100890	DRAIN PUMP 30W 220/50	
100891	DRAIN PUMP 30W 220/60	
100892	DRAIN PUMP 30W 115V/1/60Hz	
113380	CABLE	
130449	PUSH BUTTON BR-BC-FC	
130497	SWITCH SUPPORT	
190158	SUPPORT	
200616	DRAIN HOSE 3MT FCM	
200779	DRAIN HOSE FOR BR-BC-FC43	
201066	INLET HOSE LB DRAIN PUMP	
450105	CLAMP FE ZN. 26-38 H=12,2	
450114	CLAMP FE ZN.22-32 H=12,2	
450321	GREY COVER FOR PUSH BUTTON BR-	
450328	DRAIN SWITCH	



05 - 2009 M.SA

Code	Description	Price ()
100555	FAN TGA60/1 360-30	
110362	HEAT.ELEMENT 9000W 220/380V	
110388	HEAT.ELEMENT 10000W 230/400V	
113357	CABLE FOR CRC	
120460	RELAY 16A 220V	
130930	CONTACT ABB 1NO/1NC 180"	
130933	SUPPL. CONTACT NO/NC ABB	
323910	CRC UPPER COVER	
332597	COLLETTORE ASPIRAZ. CRC C2001	
340385	PARATIA VENT."POST" CRC C2001	
352110	BACK PANEL	
352111	BACK PANEL CRC	
352112	FRONT COVER CRC	
390194	BACK PANEL CRC	
400826	CRC BATTERY	
H26556	HOSE	



Code	Description	Price (€)
100555	FAN TGA60/1 360-30	
110362	HEAT.ELEMENT 9000W 220/380V	
110388	HEAT.ELEMENT 10000W 230/400V	
113357	CABLE FOR CRC	
130930	CONTACT ABB 1NO/1NC 180"	
130930V01	CONTACT ABB TEMP.TEF5-OFF	
150865		
150866		
332621	COLLETTORE ASPIRAZ.CRC2	
340395	PARATIA VENT."POST"CRC2	
340396	SQUADR.SOST.VENT.100555 CRC2	
340397	DEFLETTORE INTERNO CRC2	
352118	SCHIENALE PER CRC2	
391605		
400830	BATTERIA CRC2 (MOD 395201)	
H26556	HOSE	



FOODSERVICE EQUIPMENT SPARES LTD

UNIT 4 SANDBROOK PARK, SANDBROOK WAY, ROCHDALE, OL11 1RY

01706 353 633

SALES@FOODSERVICESPARES.COM



WWW.FOODSERVICESPARES.COM