

TECHNICAL **DIAGRAMS**

marco 

POURING PERFECTION

TUBULAR FONT NO DRIP TRAY
1000584

01706 353 633

WWW.FOODSERVICESPARES.COM

Tubular Font no drip tray SERVICE MANUAL



<p>Marco Beverage Systems Limited. 63d Heather Road, Sandyford Industrial Estate, Dublin 18.</p>	<p>Marco Beverage Systems Limited. Shire House, Strixton Manor, Strixton, Wellingborough, Northants, NN29 7PA</p>
<p>Ireland Tel: +353 (0)1 295 2674 Ireland Fax: +353 (0)1 295 3715 Email: sales@marco.ie www.marco.ie</p>	<p>UK Tel: +44 (0)2072 744 577 UK Fax: +44 (0)2079 788 141 Email: sales@marco-bev.co.uk www.marco-bev.co.uk</p>

TABLE OF CONTENTS

1. INTRODUCTION	3
2. INSTALLATION	4
a. Mounting	4
b. Plumbing.....	5
c. Electrical	6
3. CLEANING	7
4. RISK OF SCALDING	8
5. ASSEMBLY DRAWINGS.....	9
a. Parts List.....	9
b. Replacing the Button.....	11

1. INTRODUCTION

The information provided in this manual is intended to assist in the installation and maintenance of the Marco Tubular Font no drip tray. Please read the instructions carefully to prevent accidents and ensure an efficient installation.

This manual is not a substitute for any safety instructions or technical data affixed to the machine or its packaging. All information in this manual is current at the time of publication and is subject to change without notice.

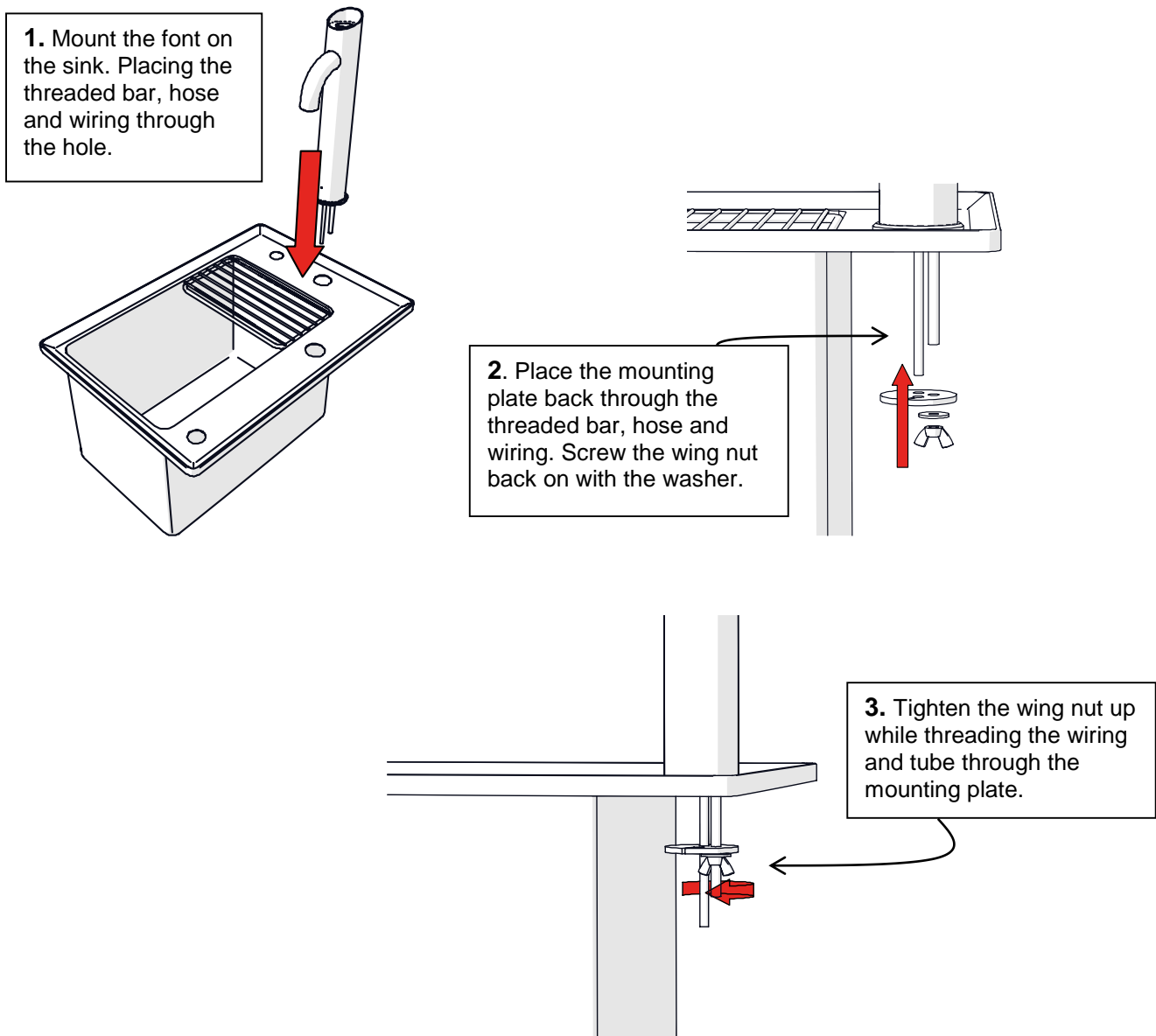
Only technicians or service providers authorised by Marco should carry out installation and maintenance of these machines.

Marco accepts no responsibility for any damage or injury caused by incorrect or unreasonable installation and operation.

2. INSTALLATION

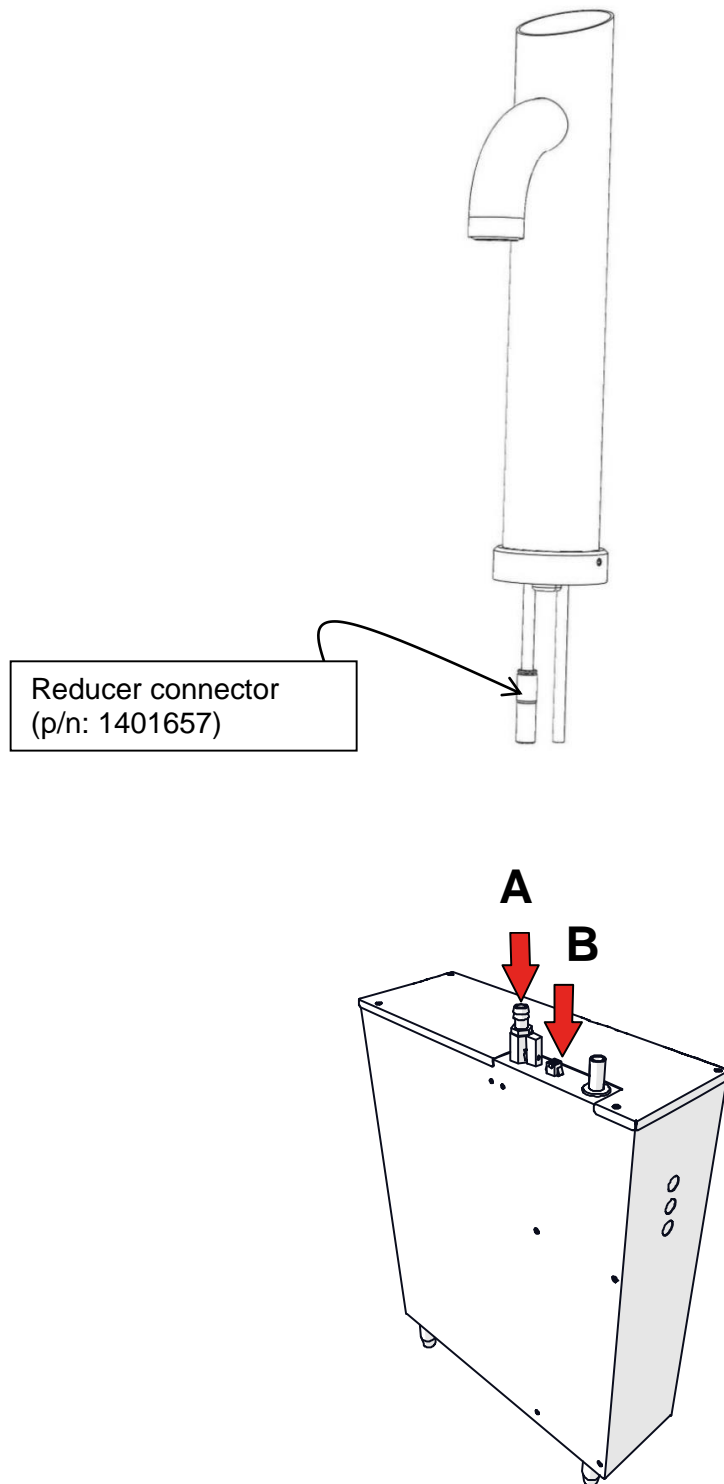
a. Mounting

- Cut a Ø32mm circular cut out in the sink/counter for the font.
- The font is then securely mounted as shown below using the washer and nut provided.
- The wire and water outlet tube should pass freely through the large hole through to the underside of the counter.
- For added stability a bead of silicone sealant can be applied to the underside of the font around the perimeter.



b. Plumbing

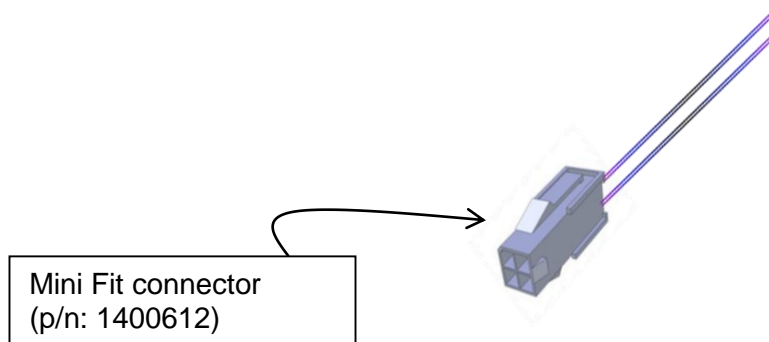
- This font is supplied with 1.5 metre of silicone tubing.
- One end of this tube should be securely fitted to the reducer connector on the font and the other end should be connected to the font water outlet connector (A) on the top of the boiler.
- This tube should be trimmed to ensure a minimum length from boiler to font.
- Connect the wiring from the font to the four way connector (B).



c. Electrical

- The wires from the font are terminated in a Mini Fit connector which will plug into a similar Mini Fit connector mounted on the top lid of the under counter boiler.

Note: when connected to a Marco under counter boiler the electrical connections are not polarity sensitive. If a non-Marco Font or Boiler is being used contact your representative to ensure that the electrical connections are appropriate.



3. CLEANING

The exterior of the font may be cleaned with a damp cloth and a light detergent. Do not use abrasive cloths or creams, as this will spoil the finish of the font. Do not use a water jet or spray. Beware of accidentally operating the font when cleaning around the font button.

4. RISK OF SCALDING

Beware of accidentally operating the font, especially when cleaning around the font button.

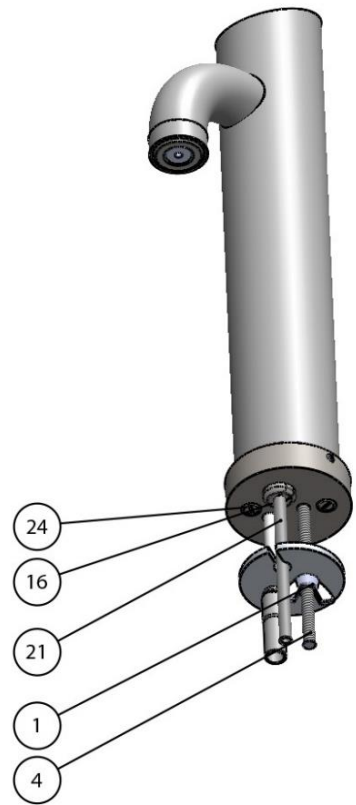
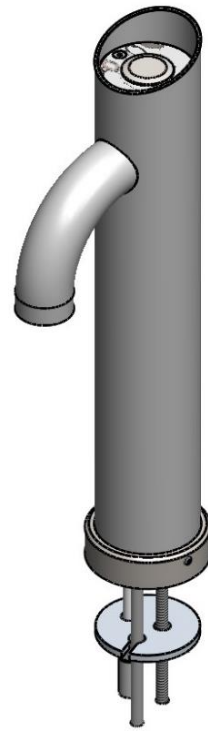
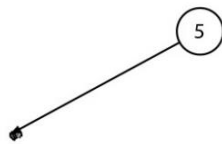
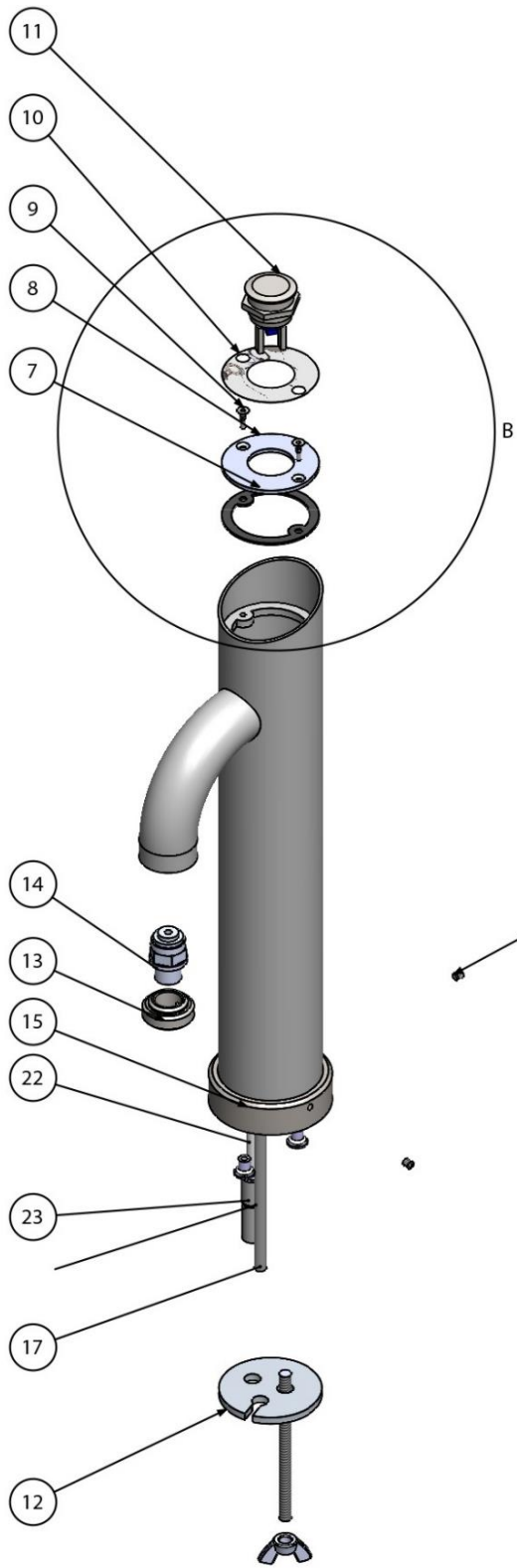
The utmost care has been taken in the manufacture and testing of this unit. Failure to install, maintain and/or operate this font according to the manufacturer's instructions may result in conditions that can cause bodily injury or damage to property. If in doubt about the serviceability of the font always contact the manufacturer or your own supplier for advice.

5. ASSEMBLY DRAWINGS

a. Parts List

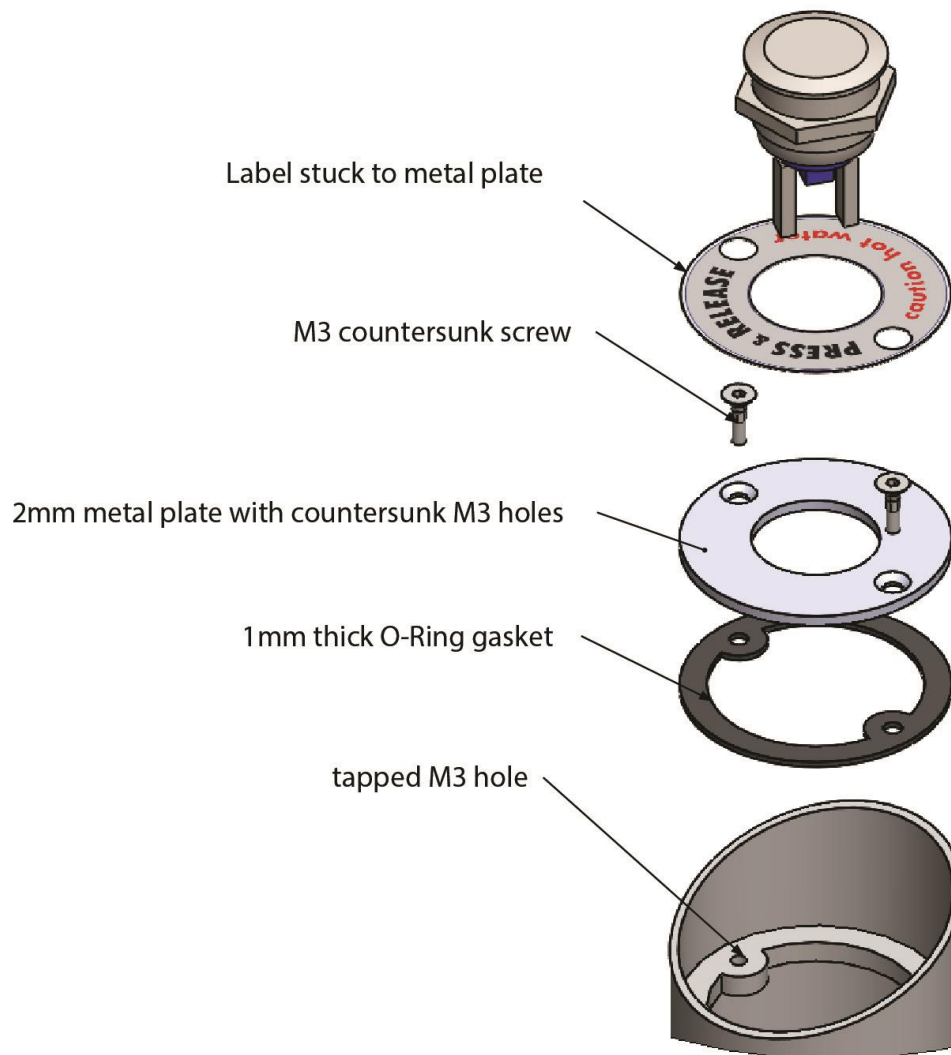
See below table and diagram which lists the different parts in the font.

PART NUMBER	ITEM NO.	DESCRIPTION
1401279	1	NUT M6 S/S WING
1200149	4	Rod M7 threaded 80mm
1400848	5	M4 x 4mm Grub screw
1800316	7	Gasket Switch Tubular Font
2200238	8	Tubular Font 2mm Ring
1401712	9	M3x10mm countersunk screw
1900393	10	Label round PtoD Caution Hot Water
1501221	11	Push button 2 pin 22mm
2200237	12	Tubular Font Clamping Plate
1401124	13	Tubular Font Nozzle
1400055	14	LIQUIDFIT D6 MALE 1/4" BSPT STANDARD P2
2200236	15	Tubular Font Base Collar
1800546	16	Strain Relief for 6mm wire
1800635	22	Hose PTFE 4mm I.D. x 6mm OD.
1401657	23	Plug in reducer fitting
1401763	24	Screw M4 x 12mm C/Sunk S/S Slot



b. Replacing the Button

See below diagram which illustrates how to replace the button on the front. Please note an M3 Philips head screw driver is required to access the button.





FOODSERVICE EQUIPMENT SPARES LTD

UNIT 4 SANDBROOK PARK, SANDBROOK WAY, ROCHDALE, OL11 1RY

01706 353 633

SALES@FOODSERVICESPARES.COM



WWW.FOODSERVICESPARES.COM