



TECHNICAL **DIAGRAMS**

IMPERIAL

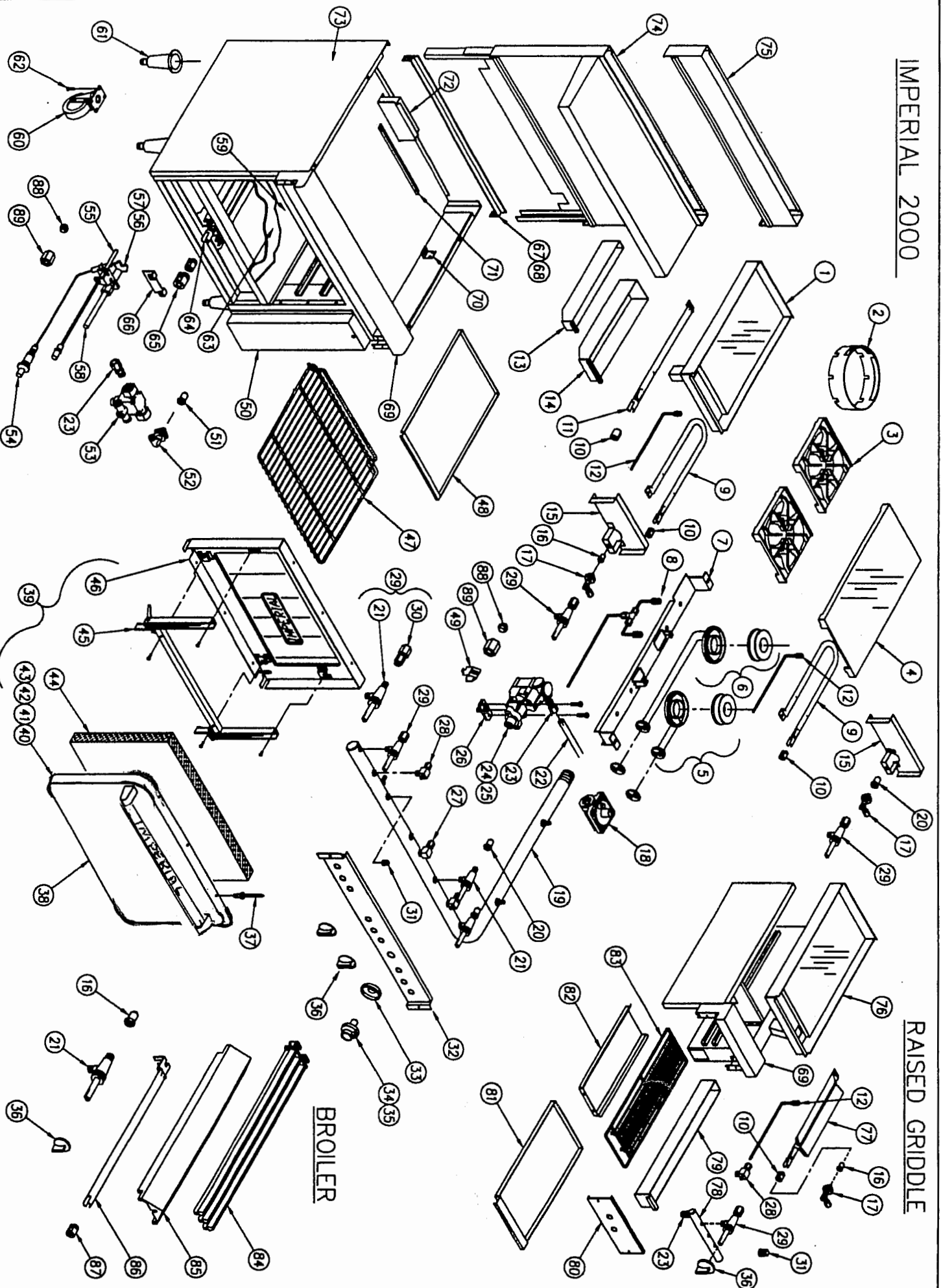
2000

01706 353 633

WWW.FOODSERVICESPARES.COM

IMPERIAL 2000

RAISED GRIDDLE



IR 2000 Series Medium Duty Range w/Standard Oven

| ITEM NO | DESCRIPTION | PART # | 24" | 36" | 48" | 60" | 72" |
|---------|---|----------|----------|----------|----------|----------|----------|
| 1 | Griddle Plate Assembly 12" | 20006 | 1 | 1 | 1 | 1 | 1 |
| | Griddle Plate Assembly 24" | 20007 | 1 | 1 | 1 | 1 | 1 |
| | Griddle Plate Assembly 36" | 20008 | | 1 | 1 | 1 | 1 |
| | Griddle Plate Assembly 48" | 20009 | | | 1 | 1 | 1 |
| | Griddle Plate Assembly 60" | 20010 | | | | 1 | 1 |
| | Griddle Plate Assembly 72" | 20011 | | | | | 1 |
| 2 | Wok Ring | 21065 | Optional | Optional | Optional | Optional | Optional |
| 3 | Top Grate IR 2000 12" X 12" | 1233 | 4 | 6 | 8 | 10 | 12 |
| *** | "S" Grate 6" X 24" Top Grate | 33502 | 2 | 3 | 4 | 5 | 6 |
| 4 | Hot Top Polished 12" x 24" | 5009 | 2 | 3 | 4 | 5 | 6 |
| 5 | Open Burner Front Venturi | 1231 | 2 | 3 | 4 | 5 | 6 |
| | Anti Clogging Burner Head | 2119 | 4 | 6 | 8 | 10 | 12 |
| | Wok Jet Burner Head | 1230-J | 4 | 6 | 8 | 10 | 12 |
| | Saute Burner Head | 1230-S | 4 | 6 | 8 | 10 | 12 |
| | Open Burner Air Shutter / Mixer Only | 1007 | 4 | 6 | 8 | 10 | 12 |
| 6 | Open Burner Rear Venturi | 1232 | 2 | 3 | 4 | 5 | 6 |
| | Anti Clogging Burner Head | 2119 | 4 | 6 | 8 | 10 | 12 |
| | Wok Jet burner Head | 1230-J | 4 | 6 | 8 | 10 | 12 |
| | Saute Burner Head | 1230-S | 4 | 6 | 8 | 10 | 12 |
| | Open Burner Air Shutter / Mixer Only | 1007 | 4 | 6 | 8 | 10 | 12 |
| 7** | Burner Support Bracket | 2682 | 2 | 3 | 4 | 5 | 6 |
| 8 | Pilot Burner Complete Assembly | 2683 | 2 | 3 | 4 | 5 | 6 |
| | Pilot Burner Assembly (5in.) | 2684 | 2 | 3 | 4 | 5 | 6 |
| *** | Pilot Burner Assembly Complete (Open Top Elite) | 20001 | 2 | 3 | 4 | 5 | 6 |
| *** | Pilot Burner Assembly (7in.) | 10000-7 | 2 | 3 | 4 | 5 | 6 |
| | Tee (Brass) 3/16" | 3097 | 2 | 3 | 4 | 5 | 6 |
| | Inlet Tubing | 2100-14 | 2 | 3 | 4 | 5 | 6 |
| 9 | Griddle Or Hot Top Burner ("U" Shape) | 1032 | 2 | 3 | 4 | 5 | 6 |
| 10 | Air Shutter (Used W / Part 1032) | 1024 | 2 | 3 | 4 | 5 | 6 |
| 11 | Griddle Burner ("I" Shape) W / Air Shutter | 1033 | 1 | 2 | 3 | 4 | 5 |
| 12 | Griddle Or Hot Top Pilot Burner Assembly | 20020 | 2 | 3 | 4 | 5 | 6 |
| 13 | Wide Grease Can IR 2000 2" | 21095 | 1 | 1 | 1 | 1 | 1 |
| 14 | Wide Grease Can IR 2000 (22 x 3-1/2 x 2-3/4) | 31721 | 1 | 1 | 1 | 1 | 1 |
| 14A | Grease Can Shield | 33567 | 1 | 1 | 1 | 1 | 1 |
| 15 | Griddle Front Baffle 12" | 20031 | 1 | 1 | 1 | 1 | 1 |
| | Griddle Front Baffle 24" | 20032 | 1 | 1 | 1 | 1 | 1 |
| | Griddle Front Baffle 36" | 20033 | | 1 | 1 | 1 | 1 |
| | Griddle Front Baffle 48" | 20034 | | | 1 | 1 | 1 |
| | Griddle Front Baffle 60" | 20035 | | | | 1 | 1 |
| | Griddle Front Baffle 72" | 20036 | | | | | 1 |
| 16 | Griddle Or RG. / Broiler Orifice NAT. | 2065 | 2 | 3 | 4 | 5 | 6 |
| | Griddle Or RG. / Broiler Orifice L.P. | 2068-1 | 2 | 3 | 4 | 5 | 6 |
| 17 | Orifice 90 Elbow - Brass (With Out Orifice) | 37188 | 2 | 3 | 4 | 5 | 6 |
| 18 | Gas Pressure Regulator 3/4" NAT. | 1050 | 1 | 1 | 1 | 1 | 1 |
| | Gas Pressure Regulator 3/4" L.P. | 1051 | 1 | 1 | 1 | 1 | 1 |
| 19 | Manifold Pipe - CALL FACTORY FOR MORE INFO | | 1 | 1 | 1 | 1 | 1 |
| 20 | Open Burner Orifice NAT. | 2059 | 4 | 6 | 8 | 10 | 12 |
| | Open Burner Orifice L.P. | 2076 | 4 | 6 | 8 | 10 | 12 |
| | Hot Top Orifice NAT. | 2063 | 2 | 3 | 4 | 5 | 6 |
| | Hot Top Orifice L.P. | 2068 | 2 | 3 | 4 | 5 | 6 |
| 21 | Open Burner Valve (With Out Orifice) | 1610 | 4 | 6 | 8 | 10 | 12 |
| 22 | Stainless Steel Flex Tubing 3/16" | 37001-58 | 1 | 1 | 1 or 2 | 1 or 2 | 1 or 2 |
| 23 | Straight Fitting - Brass | 30293 | 2 | 2 | 2 | 4 | 4 |
| 24 | Oven Thermostat | 1150 | 1 | 1 | 1 | 2 | 2 |
| | Griddle Thermostat | 1100 | 1 | 2 | 2 | 3 | 3 |
| **** | New Griddle Thermostat | 36015 | | | | | |
| 26 | Thermostat Saddle Mount | 1104 | 1 | 1 or 2 | 1 or 2 | 2 or 3 | 2 or 3 |
| 27 | Elbow 90 Degree Fitting For Oven Pilot | 30278 | 1 | 1 | 1 | 2 | 2 |
| 28 | Adjustable Single Pilot Valve | 1604 | 1 | 1 | 1 | 2 | 2 |
| **** | Adjustable Double Pilot Valve | 1003 | | | | | |
| 29 | Griddle Or RG / Broiler Valve W/O Adapter | 1610 | 2 | 3 | 4 | 5 | 6 |
| 30 | Adapter Used With PN # 1610 | 30286 | 2 | 3 | 4 | 5 | 6 |
| 31 | Plug 1/8" | 30257 | 1 or 2 | 1 or 2 | 1 or 2 | 1 or 2 | 1 or 2 |
| 32 | Valve Cover - S/S | | 1 | 1 | 1 | 1 | 1 |
| 33 | Thermostat Bezel - Chrome | 1103 | 1 | 1 | 1 | 2 | 2 |

IR 2000 Series Medium Duty Range w/Standard Oven

| ITEM NO | DESCRIPTION | PART # | 24" | 36" | 48" | 60" | 72" |
|--|---|-------------|-----|-----|---------|---------|---------|
| 34 | Oven Thermostat Knob | 1151 | 1 | 1 | 1 | 2 | 2 |
| 35 | Griddle Thermostat Knob | 1101 | 1 | 2 | 2 | 3 | 3 |
| 36 | Burner Knob - W / Logo Chrome Blue | 36330 | 4 | 6 | 8 | 10 | 12 |
| 37 | Door Rivets S/S | 1070-SK | 8 | 8 | 8 | 8 or 16 | 8 or 16 |
| 38 | Kick Plate S/S Pivot Style 20" Oven | 20142 | 1 | | 2 | | |
| | Kick Plate S/S Pivot Style 26-1/2" Oven | 20143 | | 1 | 1 | 2 | 2 |
| | Kick Plate Bracket | 20144 | 1 | 1 | 1 | 8 or 16 | 2 |
| 39 | Door Complete Assembly 20" Oven | 2685 | 1 | | 2 | | |
| | Door Complete Assembly 26-1/2" Oven | 2688 | | 1 | 1 | 2 | 2 |
| ASSEMBLY CONSISTS OF NEXT 7 ITEMS | | | | | | | |
| 40 | Door Cover S/S 20" Oven | 2687 | 1 | | 2 | | |
| | Door Cover S/S 26-1/2" Oven | 2689 | | 1 | 1 | 2 | 2 |
| 41 | Oven Door Handle S/S 20" Oven | 36099 | 1 | | 2 | | |
| | Oven Door Handle S/S 26-1/2" Oven | 36100 | | 1 | 1 | 2 | 2 |
| 42 | Oven Handle Right Side | 36101 | 2 | 2 | 8 or 16 | 4 | 4 |
| 42A | Oven Handle Left Side | 36102 | 2 | 2 | 1 or 2 | 4 | 4 |
| 43 | Imperial Logo | 35840 | 1 | 1 | 1 or 2 | 2 | 2 |
| | Name Plate Speed Nut | 36569 | 2 | 2 | 1 or 2 | 2 | 2 |
| 44 | Door Insulation 20" Oven | 20154 | 1 | | 2 | | |
| | Door Insulation 26-1/2" Oven | 8040-1 | | 1 | 1 | 2 | 2 |
| 45 | Door Closing Mechanism 20" Oven | 20160 | 1 | | 2 | | |
| | Door Closing Mechanism 26-1/2" Oven | 20161 | | | 1 | 2 | 2 |
| 46 | Door Liner (20" Oven) - Porcelainized | 9030 | 1 | | 2 | | |
| | Door Liner 26-1/2" Oven - Porcelainized | 2128 | | 1 | 1 | 1 | 1 |
| 47 | Oven Rack 20" Oven | 2120 | 1 | | 2 | | |
| | Oven Rack 26-1/2" Oven | 2130 | | 1 | 1 | 2 | 2 |
| 48 | Crumb Tray 12" | 20002 | 1 | 1 | 1 | 1 | 1 |
| | Crumb Tray 24" | 20003 | 1 | | 2 | | |
| | Crumb Tray 24" (New Style 4/06) | 34683-1 | 1 | | 2 | | |
| | Crumb Tray 36" | 20004 | | 1 | | | 2 |
| | Crumb Tray 36" (New Style 4/06) | 34683-2 | | 1 | | | 2 |
| 49 | Thermostat Bulb Clip | 3038 | 1 | 1 | 1 or 2 | 2 | 2 |
| 50 | Right Side Front Panel S/S | 20110 | | 1 | | | 1 |
| | Left Side Front Panel S/S | 20111 | | | | | 1 |
| 51 | Oven Orifice NAT. 26-1/2" | 2061 | | 1 | 1 | 2 | 2 |
| | Oven Orifice L.P. 26-1/2" | 2065 | | 1 | 1 | 2 | 2 |
| | Oven Orifice NAT. 20" | 2074 | 1 | | 2 | | |
| | Oven Orifice L.P. 20" | 2076 | 1 | | 2 | | |
| 52 | Oven Orifice 90 Degree Elbow Fitting Only | 1615 | 1 | 1 | 1 | 2 | 2 |
| *** | 90 Deg.Brass Elbow | 30118 | 1 | 1 | 1 or 2 | 2 | 2 |
| 53 | Oven Safety Valve | 1110 | 1 | 1 | 1 | 2 | 2 |
| | Inverted Flare Nut | 30281 | 2 | 2 | 1 or 2 | 4 | 4 |
| | Ferrel | 30280 | 2 | 2 | 2 or 4 | 4 | 4 |
| *** | Oven Safety Valve - BASO | 1110-1 | 1 | 1 | 1 or 2 | 2 | 2 |
| 54 | Manual Spark Igniter | 1075 | 1 | 1 | 1 or 2 | 2 | 2 |
| 55 | Oven Thermocouple 12" Long | 1121 | 1 | 1 | 1 or 2 | 2 | 2 |
| *** | 12" Inch Thermocouple - BASO | 1121-1 | 1 | 1 | 1 or 2 | 2 | 2 |
| 56 | Oven Pilot Burner W / Ignition Wire Attach - NAT. | 1120 | 1 | 1 | 1 or 2 | 2 | 2 |
| | Oven Pilot Burner W / Ignition Wire Attach - L.P. | 1120 & 1018 | 1 | 1 | 1 or 2 | 2 | 2 |
| *** | Oven Pilot Burner W / Out Wire Attach - NAT. | 1120-1 | 1 | 1 | 1 or 2 | 2 | 2 |
| *** | Oven Pilot Burner W / Out Wire Attach - L.P. | 1291 | 1 | 1 | 1 or 2 | 2 | 2 |
| *** | 3/8" x 3/8" Mip. St. Fitting W / Nut & Sleeve | 2995 | 1 | 1 | 1 or 2 | 2 | 2 |
| *** | 3/8" Compression Nut For All | 30266 | 1 | 1 | 1 or 2 | 2 | 2 |
| *** | 3/8" Ferrel For All | 30272 | 1 | 1 | 1 or 2 | 2 | 2 |
| *** | 1/4" Inverted Brass Flare Nut | 30271 | 2 | 2 | 2 or 4 | 2 | 2 |
| | Ferrel (Oversized) 3/16" | 30319 | 1 | 1 | 1 or 2 | 2 | 2 |
| | Compression Fitting (Nut) 3/16" | 30262 | 1 | 1 | 1 or 2 | 2 | 2 |
| 57 | Oven Pilot Orifice - NAT. #18 | 1017 | 1 | 1 | 1 or 2 | 2 | 2 |
| | Oven Pilot Orifice - L.P. #10 | 1018 | 1 | 1 | 1 or 2 | 2 | 2 |
| 58 | Stainless Steel Flex Tubing 3/16" | 37001-58 | 1 | 1 | 1 or 2 | 1 or 2 | 1 or 2 |
| *** | Stainless Steel Flex Tubing 1/4" | 34681-60 | 1 | 1 | 1 or 2 | 1 or 2 | 1 or 2 |
| 59 | Oven Bottom 20" Oven - Porcelainized | 20268 | 1 | | 2 | | |
| | Oven Bottom 26-1/2" - Porcelainized | 9047 | | 1 | 1 | 2 | 2 |
| 60 | Caster - 6" With Swivel Plate | 1060 | 2 | 2 | 2 | 2 | 3 |
| 60 | Caster With Brake - 6" With Swivel Plate | 1061 | 2 | 2 | 2 | 2 | 3 |

IR 2000 Series Medium Duty Range w/Standard Oven

| ITEM NO | DESCRIPTION | PART # | 24" | 36" | 48" | 60" | 72" |
|---------|--|--------|----------|----------|----------|----------|----------|
| 61 | Leg With Adjustable Foot 6" | 30555 | 4 | 4 | 4 | 4 | 6 |
| 62 | Screw 14" X 3/4" (4 Per Caster) | 30358 | 12 or 16 | 12 or 16 | 12 or 16 | 12 or 16 | 18 or 24 |
| 63 | Oven Flame Spreader 26 1/2" Oven | 20235 | | 1 | 1 | 2 | 2 |
| *** | Oven Flame Spreader 26 1/2" Oven (New Style) | 31584 | | 1 | 1 | 2 | 2 |
| *** | Oven Flame Spreader 20" Oven | 31583 | 1 | | 2 | | |
| 64 | Oven Burner W / Air Shutter | 2099 | 1 | 1 | 1 | 2 | 2 |
| *** | Burner Compartment Baffle | | | | | | |
| 65 | Air Shutter - For Oven Burner | 1037 | 1 | 1 | 1 | 2 | 2 |
| 66 | Safety Valve Bracket | 20021 | 1 | 1 | 1 | 2 | 2 |
| 67 | Rear Angle Support 24" | 20680 | 1 | 1 | 1 | 1 | 1 |
| | Rear Angle Support 36" | 20681 | | 1 | 1 | 1 | 1 |
| | Rear Angle Support 48" | 20682 | | | 1 | 1 | 1 |
| | Rear Angle Support 60" | 20683 | | | | 1 | 1 |
| | Rear Angle Support 72" | 20684 | | | | | 1 |
| | Rear Angle Support RG. Only 23" | 20690 | 1 | 1 | 1 | 1 | 1 |
| | Rear Angle Support RG. Only 35" | 20691 | | 1 | 1 | 1 | 1 |
| | Rear Angle Support RG. Only 47" | 20692 | | | 1 | 1 | 1 |
| 68 | Front Angle Support 24" | 20685 | 1 | 1 | 1 | 1 | 1 |
| | Front Angle Support 36" | 20686 | | 1 | 1 | 1 | 1 |
| | Front Angle Support 48" | 20687 | | | 1 | 1 | 1 |
| | Front Angle Support 60" | 20688 | | | | 1 | 1 |
| | Front Angle Support 72" | 20689 | | | | | 1 |
| | Front Angle Support RG. Only 23" | 20660 | 1 | 1 | 1 | 1 | 1 |
| | Front Angle Support RG. Only 35" | 20661 | | 1 | 1 | 1 | 1 |
| | Front Angle Support RG. Only 47" | 20662 | | | 1 | 1 | 1 |
| 69 | Landing Ledge 12" | 21168 | 1 | 1 | 1 | 1 | 1 |
| | Landing Ledge 24" | 21160 | 1 | 1 | 1 | 1 | 1 |
| | Landing Ledge 36" | 21161 | | 1 | 1 | 1 | 1 |
| | Landing Ledge 48" | 21162 | | | 1 | 1 | 1 |
| | Landing Ledge 60" | 21163 | | | | 1 | 1 |
| | Landing Ledge 72" | 21164 | | | | | 1 |
| | Landing Ledge RG. Only 25" | 21165 | 1 | 1 | 1 | 1 | 1 |
| | Landing Ledge RG. Only 37" | 21166 | | 1 | 1 | 1 | 1 |
| | Landing Ledge RG. Only 49" | 21167 | | | 1 | 1 | 1 |
| *** | Note, Landing Ledge after 3/10/03 different | | | | | | |
| 70 | Manifold Bracket | 20020 | 1 | 1 | 1 | 1 | 1 |
| 71 | Crumb Tray Back Stop | 21120 | 1 | 1 | 2 | 2 | 2 |
| 72 | Flue Box | 21125 | 1 | 1 | 1 | 2 | 2 |
| 73 | Side Panel | 21140 | 2 | 2 | 2 | 2 | 2 |
| | Side Panel For RG. Left Or Right | 21141 | 1 | 1 | 1 | 1 | 1 |
| *** | IR Side Panel Left Hand | 31617 | 1 | 1 | 1 | 1 | 1 |
| *** | IR Side Panel Right Hand | 31618 | 1 | 1 | 1 | 1 | 1 |
| 74 | Backguard Assembly 24" | 21200 | 1 | | | | |
| | Backguard Assembly 36" | 21201 | | 1 | | | |
| | Backguard Assembly 48" | 21202 | | | 1 | | |
| | Backguard Assembly 60" | 21203 | | | | 1 | 1 |
| | Backguard Assembly 72" | 21204 | | | | | 1 |
| | ASSEMBLY CONSISTS OF NEXT 4 ITEMS | | | | | | |
| | Shelf S/S 24" | 21190 | 1 | | | | |
| | Shelf S/S 36" | 21191 | | 1 | | | |
| | Shelf S/S 48" | 21192 | | | 1 | | |
| | Shelf S/S 60" | 21193 | | | | 1 | |
| | Shelf S/S 72" | 21194 | | | | | 1 |
| | Backguard 24" | 21100 | 1 | | | | |
| | Backguard 36" | 21101 | | 1 | | | |
| | Backguard 48" | 21102 | | | 1 | | |
| | Backguard 60" | 21103 | | | | 1 | |
| | Backguard 72" | 21104 | | | | | 1 |
| | Outside Back For Backguard 24" | 21195 | 1 | | | | |
| | Outside Back For Backguard 36" | 21196 | | 1 | | | |
| | Outside Back For Backguard 48" | 21197 | | | 1 | | |
| | Outside Back For Backguard 60" | 21198 | | | | 1 | |
| | Outside Back For Backguard 72" | 21199 | | | | | 1 |
| | Channel Support For Standard Backguard | 21130 | | | | | |
| | REINFORCEMENT CHANNEL TO RANGE MOUNT CHEESEMELTERS OF SALAMANDERS SEE PAGE 11 OR 13 | | | | | | |

IR 2000 Series Medium Duty Range w/Standard Oven

| ITEM NO | DESCRIPTION | PART # | 24" | 36" | 48" | 60" | 72" |
|---|---|-----------|------------|------------|------------|------------|------------|
| 75 | Stub Back Assembly 24" | 21175 | 1 | | | | |
| | Stub Back Assembly 36" | 21176 | | 1 | | | |
| | Stub Back Assembly 48" | 21177 | | | 1 | | |
| | Stub Back Assembly 60" | 21178 | | | | 1 | |
| | Stub Back Assembly 72" | 21179 | | | | | 1 |
| ASSEMBLY CONSIST OF NEXT 2 ITEMS | | | | | | | |
| | Front Panel 24" | 20265 | 1 | | | | |
| | Front Panel 36" | 20266 | | 1 | | | |
| | Front Panel 48" | 20267 | | | 1 | | |
| | Front Panel 60" | 20362 | | | | 1 | |
| | Front Panel 72" | 20363 | | | | | 1 |
| | Outside Back (Galv.) 24" | 20991 | 1 | | | | |
| | Outside Back (Galv.) 36" | 20992 | | 1 | | | |
| | Outside Back (Galv.) 48" | 20993 | | | 1 | | |
| | Outside Back (Galv.) 60" | 20994 | | | | 1 | |
| | Outside Back (Galv.) 72" | 20995 | | | | | 1 |
| IR RAISED GRIDDLE/BROILER | | | 24" | 36" | 48" | 60" | 72" |
| 76 | RG. Assembly 12" | 20012 | 1 | 1 | 1 | 1 | 1 |
| | RG. Assembly 24" | 20013 | 1 | 1 | 1 | 1 | 1 |
| 77 | Burner Assembly W / Air Shutter | 20125 | 1 | 1 | 1 | 1 | 1 |
| | Wire Mesh For Raised Griddle Burner | 20126 | 1 | 1 | 1 | 1 | 1 |
| 78 | Manifold Pipe | | 1 | 1 | 1 | 1 | 1 |
| 79 | Grease Can For Raised Griddle Burner | 20042 | 1 | 1 | 1 | 1 | 1 |
| 80 | Valve Cover S/S CALL FACTORY FOR MORE INFO | | 1 | 1 | 1 | 1 | 1 |
| 81 | Crumb Tray For Raised Griddle Broiler 12" | 20017 | 1 | 1 | 1 | 1 | 1 |
| | Crumb Tray, Raised Griddle Broiler, 19 1/4 X 22 3/8 | 20018 | 1 | 1 | 1 | 1 | 1 |
| 82 | Drip Pan For RG. Broiler 12" | 20014 | 1 | 1 | 1 | 1 | 1 |
| | Drip Pan For RG. Broiler 24" | 20015 | 1 | 1 | 1 | 1 | 1 |
| 83 | Rack For RG. Broiler 12" | 2024 | 1 | 1 | 1 | 1 | 1 |
| | Rack For RG. Broiler 24" | 2025 | 1 | 1 | 1 | 1 | 1 |
| IR RADIANT BROILER | | | | | | | |
| **** | Rack Guide | 30922 | 4 | 4 | 4-Jan | 4 | 4 |
| 84 | Top Grate, 3 Bar, 3" X 21" | 1201 | 7 | 11 | 15 | 19 | 23 |
| | Top Grate Opt. For Fish, 4 Bar 3" X 21" | 1203 | 7 | 11 | 15 | 19 | 23 |
| 85 | Burner Radiant - Cast Iron | 5025 | 4 | 6 | 8 | 10 | 12 |
| | Burner Radiant - S/S | 1302 | 4 | 4 or 6 | 4 or 6 | 4 or 6 | 4 or 6 |
| 86 | Burner W / Air Shutter - S/S | 1020 | 4 | 6 | 8 | 10 | 12 |
| 87 | Air Shutter | 1024 | 4 | 6 | 8 | 10 | 12 |
| 88 | Compression Fitting (Nut) 3/16" | 30277 | 4 | 6 | 8 | 10 | 12 |
| | Ferrel 3/16" | 30280 | 8 | 12 | 16 | 20 | 24 |
| 89 | Compression Fitting (Nut) 3/8" | 30266 | 4 | 6 | 8 | 10 | 12 |
| | Ferrel 3/8" | 30272 | 8 | 12 | 16 | 20 | 24 |
| IR RADIANT BROILER | | | | | | | |
| 90 | Liner 24" | 11400 | 1 | 1 | 1 | 1 | 1 |
| | Liner 36" | 11402 | 1 | 1 | 1 | 1 | 1 |
| 91 | Burner Orifice - Brass - NAT. | 2065 | 4 | 4 or 6 | 4 or 6 | 4 or 6 | 4 or 6 |
| | Burner Orifice - Brass - L.P. | 2068-1 | 4 | 4 or 6 | 4 or 6 | 4 or 6 | 4 or 6 |
| 92 | Burner Gas Valve - Brass | 1610 | 4 | 4 or 6 | 4 or 6 | 4 or 6 | 4 or 6 |
| 93 | Adjustable Double Pilot Valve - Brass | 1003 | | | | | |
| 94 | Burner Knob - Chrome | 36330 | 4 | 1 or 2 | 1 or 2 | 1 or 2 | 1 or 2 |
| 95 | Crumb Tray 24" | 11412 | 1 | 1 | 1 | 1 | 1 |
| | Crumb Tray 36" | 11414 | 1 | 1 | 1 | 1 | 1 |
| 96 | Pilot Burner Assembly | 10000-14 | 4 | 1 or 2 | 1 or 2 | 1 or 2 | 1 or 2 |
| | Pilot Burner Assembly - S/S | 10000-14S | 4 | 1 or 2 | 1 or 2 | 1 or 2 | 1 or 2 |



FOODSERVICE EQUIPMENT SPARES LTD

UNIT 4 SANDBROOK PARK, SANDBROOK WAY, ROCHDALE, OL11 1RY

01706 353 633

SALES@FOODSERVICESPARES.COM



WWW.FOODSERVICESPARES.COM