

TECHNICAL **DIAGRAMS**



HBB250

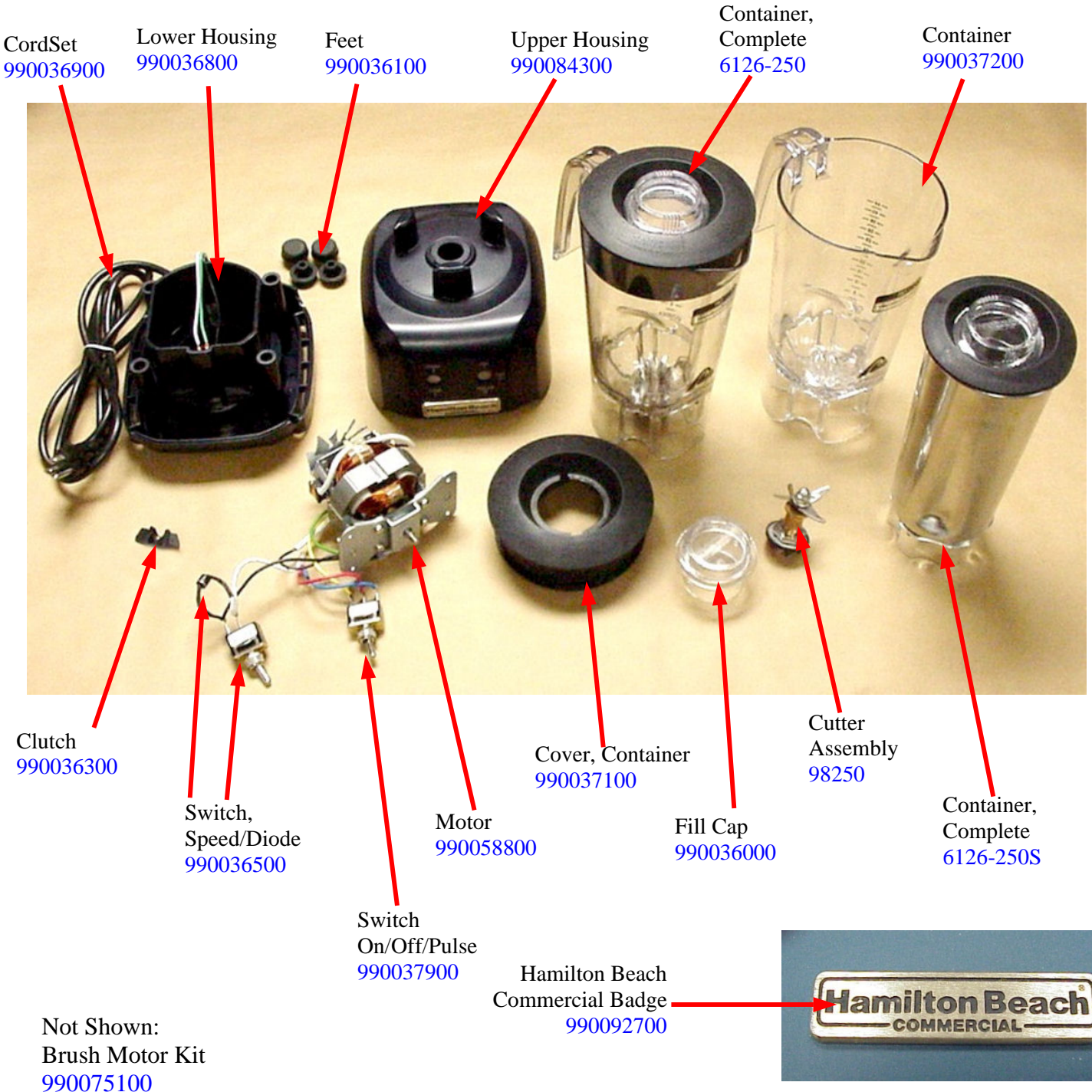
01706 353 633


WWW.FOODSERVICESPARES.COM

Replacement Parts Diagram

Model HBB250 (Series A-C & HBB250R (Series A-D))

PROPRIETARY RIGHTS NOTICE This document and all information contained within it is the property of Hamilton Beach Brands, Inc. (HBB). It is confidential and proprietary and has been provided to you for a limited purpose. It must be returned or destroyed upon request. Disclosure, reproduction or use of this document and any information contained within it, in full or in part, for any purpose is forbidden without the prior written consent of HBB. No photographs may be taken of any article fabricated or assembled from this document without the prior written consent of HBB.



	Revision Description:	Changed upper housing part number				
	Request Number:	CME-2736	Revision Date:	11/23/09	Approved by:	CME-2736
	Issue Code(s):	SP, CS	Page:	1 of 3	Document #:	510000300
					Rev:	L

Replacement Parts Diagram

Model HBB250 (Series A-C & HBB250R (Series A-D))

PROPRIETARY RIGHTS NOTICE This document and all information contained within it is the property of Hamilton Beach Brands, Inc. (HBB). It is confidential and proprietary and has been provided to you for a limited purpose. It must be returned or destroyed upon request. Disclosure, reproduction or use of this document and any information contained within it, in full or in part, for any purpose is forbidden without the prior written consent of HBB. No photographs may be taken of any article fabricated or assembled from this document without the prior written consent of HBB.

Cutter Assembly Replacement Instructions



**Cutter Repair Kit
for Rio Blenders**

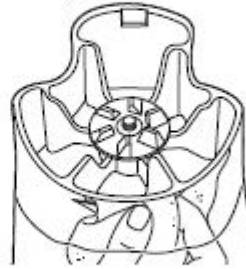


⚠ WARNING



Cut Hazard
Handle cutter assembly with care.
Failure to follow these instructions can result in cuts or other injuries.

Removing the old cutter assembly



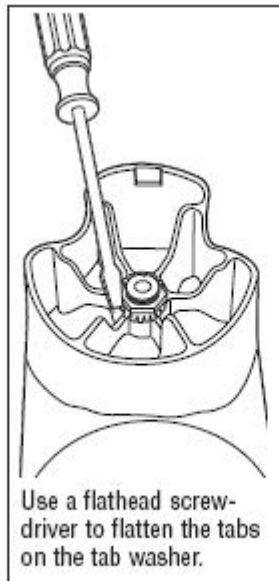
Hold the blades with a cloth. Unscrew the clutch counterclockwise.



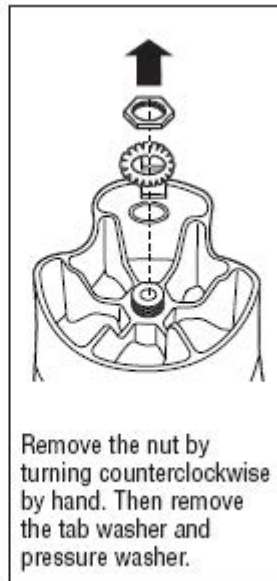
Remove the clutch and felt washer.



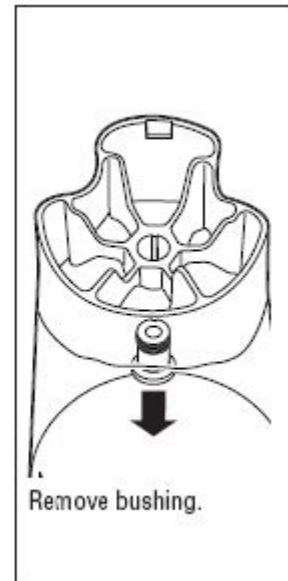
Remove the shaft and blade assembly



Use a flathead screwdriver to flatten the tabs on the tab washer.



Remove the nut by turning counterclockwise by hand. Then remove the tab washer and pressure washer.



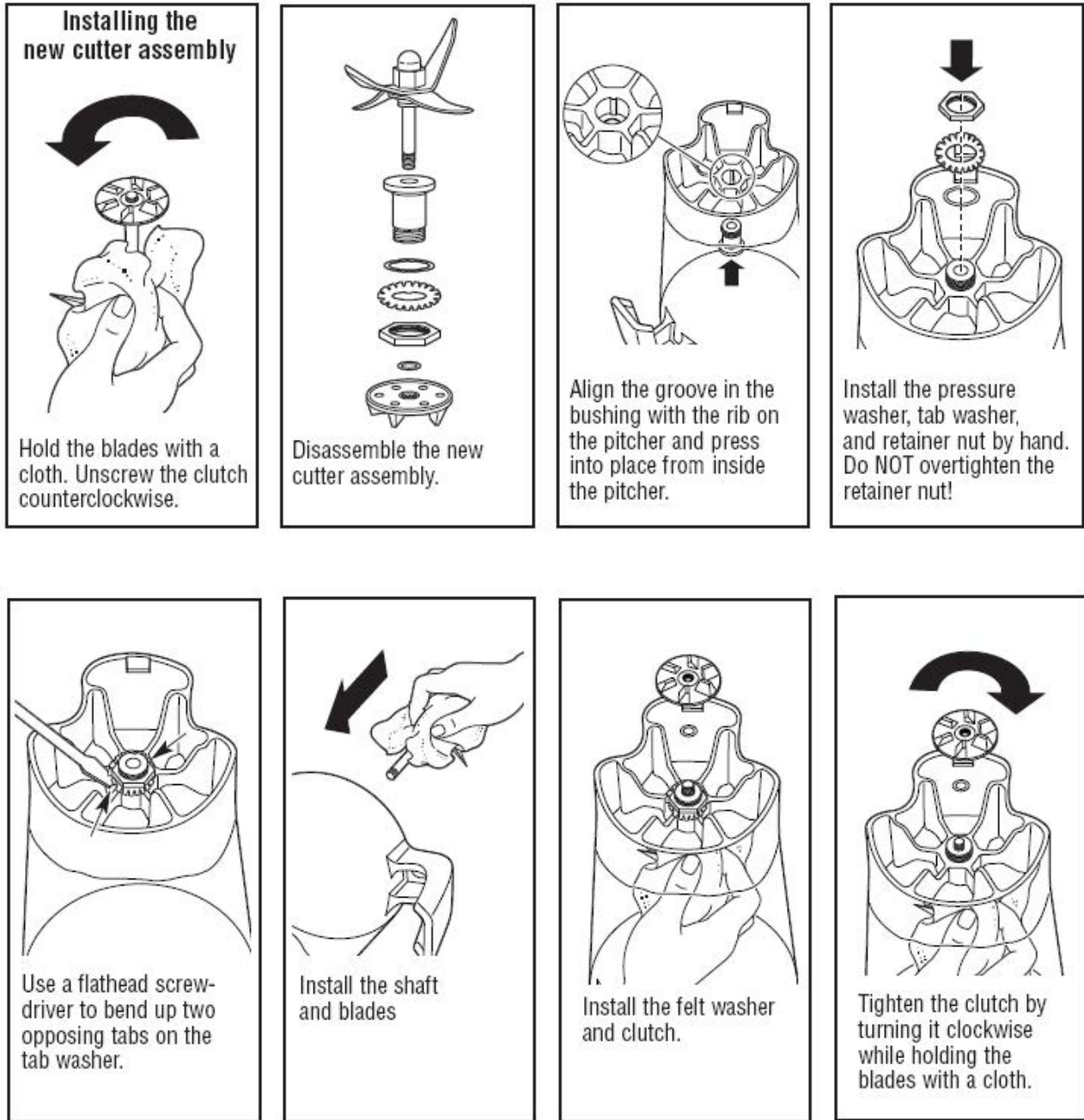
Remove bushing.

<p>4421 Waterfront Drive Glen Allen, VA 23060</p>	Revision Description: Changed upper housing part number		Revision Date: 11/23/09		Approved by: CME-2736	
	Request Number: CME-2736	Page: 2 of 3		Document #: 510000300		Rev: L
	Issue Code(s): SP, CS					

Replacement Parts Diagram

Model HBB250 (Series A-C & HBB250R (Series A-D))

PROPRIETARY RIGHTS NOTICE This document and all information contained within it is the property of Hamilton Beach Brands, Inc. (HBB). It is confidential and proprietary and has been provided to you for a limited purpose. It must be returned or destroyed upon request. Disclosure, reproduction or use of this document and any information contained within it, in full or in part, for any purpose is forbidden without the prior written consent of HBB. No photographs may be taken of any article fabricated or assembled from this document without the prior written consent of HBB.



Installing the new cutter assembly

Hold the blades with a cloth. Unscrew the clutch counterclockwise.

Disassemble the new cutter assembly.

Align the groove in the bushing with the rib on the pitcher and press into place from inside the pitcher.

Install the pressure washer, tab washer, and retainer nut by hand. Do NOT overtighten the retainer nut!

Use a flathead screwdriver to bend up two opposing tabs on the tab washer.

Install the shaft and blades

Install the felt washer and clutch.

Tighten the clutch by turning it clockwise while holding the blades with a cloth.

<p>Hamilton Beach 4421 Waterfront Drive Glen Allen, VA 23060</p>	Revision Description:	Changed upper housing part number					
	Request Number:	CME-2736	Revision Date:	11/23/09	Approved by:	CME-2736	
	Issue Code(s):	SP, CS	Page:	3 of 3	Document #:	510000300	Rev:



FOODSERVICE EQUIPMENT SPARES LTD

UNIT 4 SANDBROOK PARK, SANDBROOK WAY, ROCHDALE, OL11 1RY

01706 353 633

SALES@FOODSERVICESPARES.COM



WWW.FOODSERVICESPARES.COM