



TECHNICAL DIAGRAMS

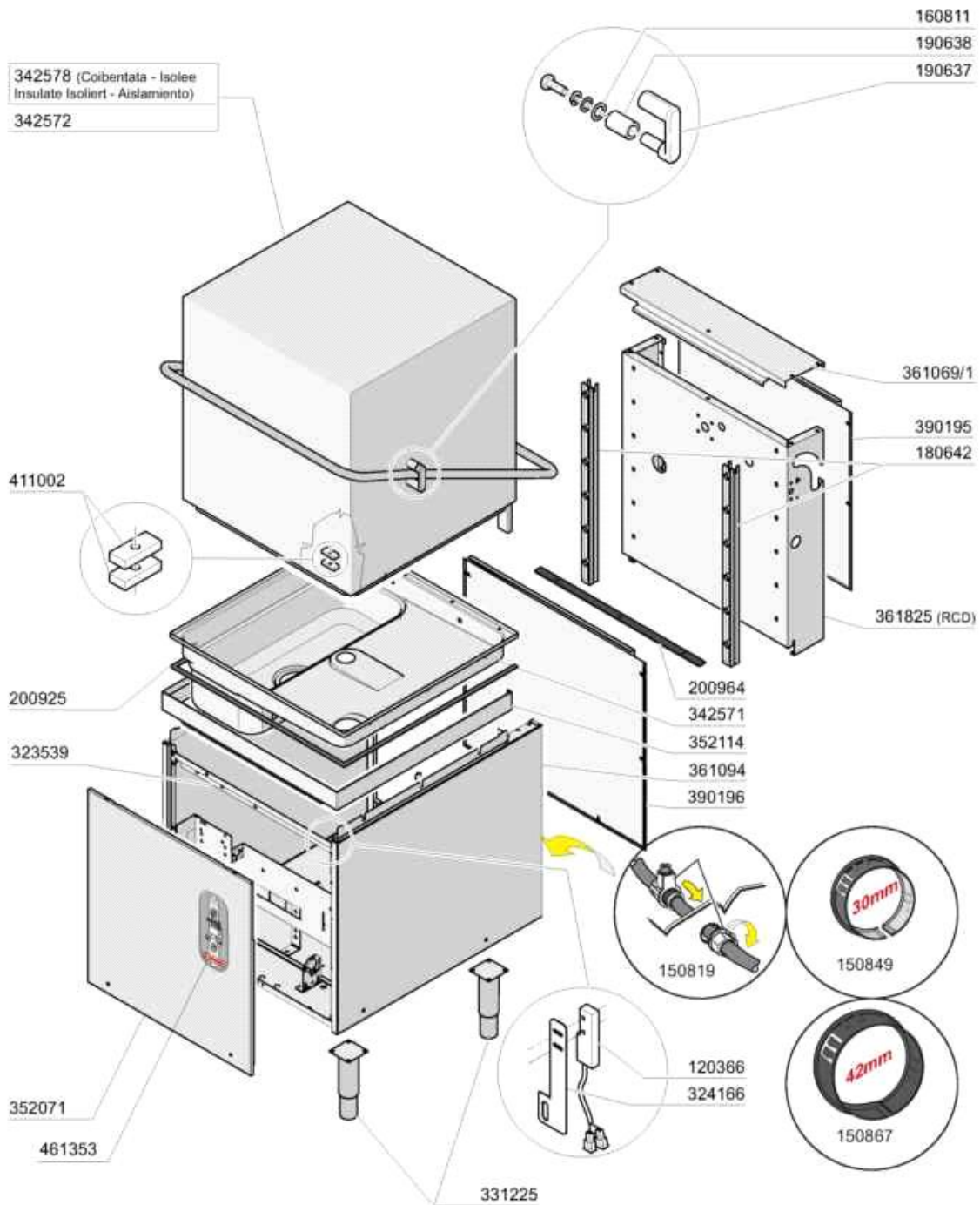


C800E

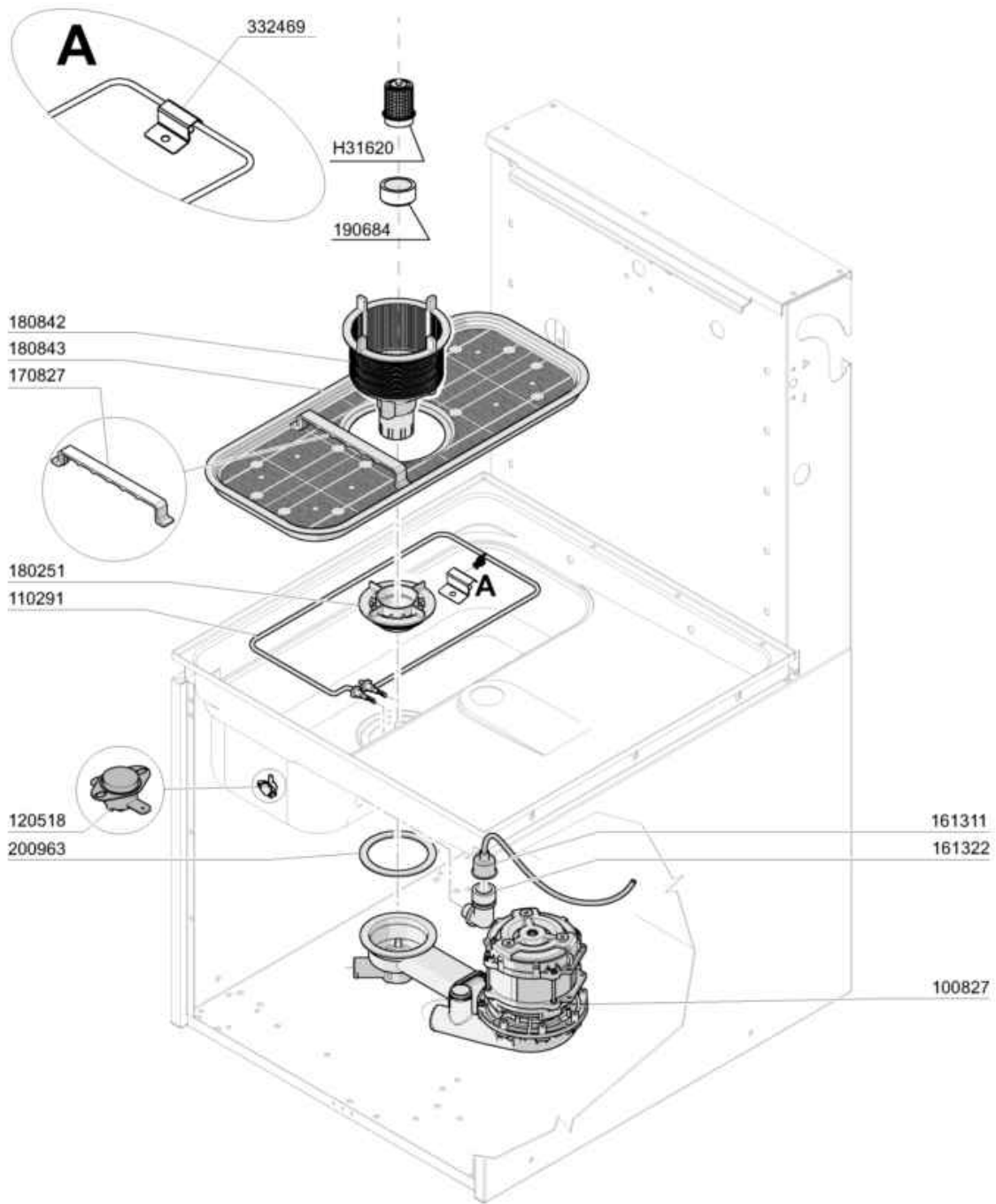
01706 353 633

WWW.FOODSERVICESPARES.COM

- 1 Hood
- 2 Tank
- 3 Handle
- 4 Wash/Rinse column
- 5 Rinse rcd
- 6 Wash arm
- 7 Wash arm
- 8 Pump
- 9 Control Box
- 10 Detergent dispenser
- 11 Rinse aid injector
- 12 Drain pump kit

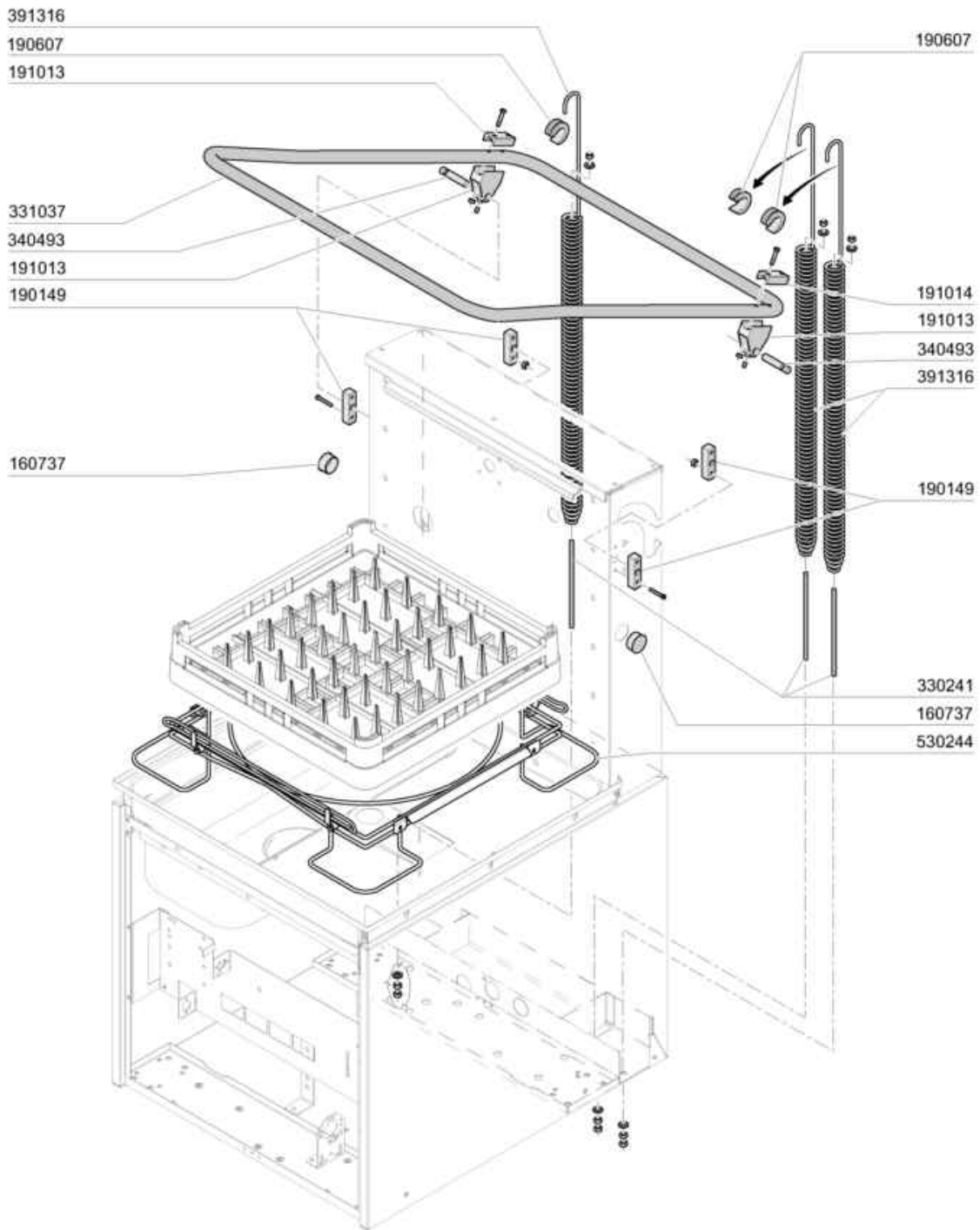


Code	Description	Price (€)
120366	MAGN.SENSOR	
150819	CABLE HOLDER PG16 WITH HOLE	
150849	PASSAC. RIGIDO TUBI FC2006	
150867		
160811	WASHER F2 18X8.5X1 ALGOF	
180642	GUIDE	
190637	GUIDE FOR DOOR "C"	
190638	ROLLER FOR "C" DOOR GUIDE	
200925	GASKET	
200964	GASKET 618X14 SP.2	
323539	BRACKET	
324166	MICROSWITCH BRACKET	
331225	ADJUSTABLE FEET	
342571	TANK	
342572	HOOD	
342578	INSULATED HOOD	
352071	FRONT PANEL	
352114	FRONT PANEL	
361069/1	COVER	
361094	BASEMENT	
361825	BACK PANEL RCD	
390195	UPPER BACK PANEL	
390196	LOWER BACK PANEL	
411002	PERMANENT MAGNET 24X12	
461353	PLATE C-GE ELECTRONIC	



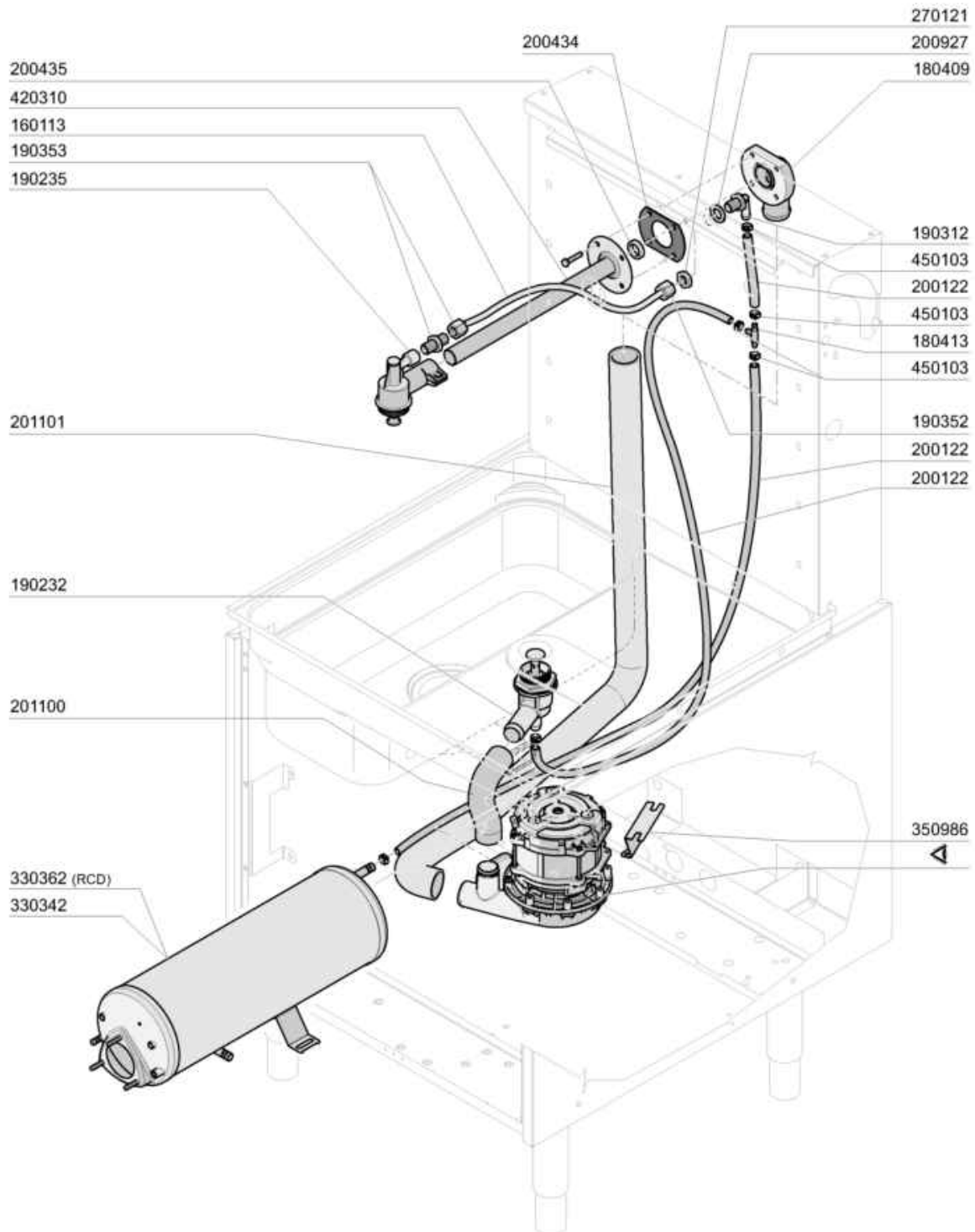
11 - 2010 M. S.

Code	Description	Price (€)
100827	WASH PUMP HP0,6 FC2006	
110291	HEATER 2000W	
120518	TANK THERMOSTAT FOR R50	
161311	HOSE FOR AIR CHAMBER BC-BR-AC9	
161322	AIR TRAP FC2006	
170827	FILTER HANDLE	
180251	FIXING NUT FOR PUMP FC2006	
180842	FCE+HRT FILTER	
180843	FILTER	
190684	FILTER BUSH	
200963	JOINT 110X88X3	
332469	BRACKET FUER HEATING ELEMENT	
H31620	DRAIN FILTER	



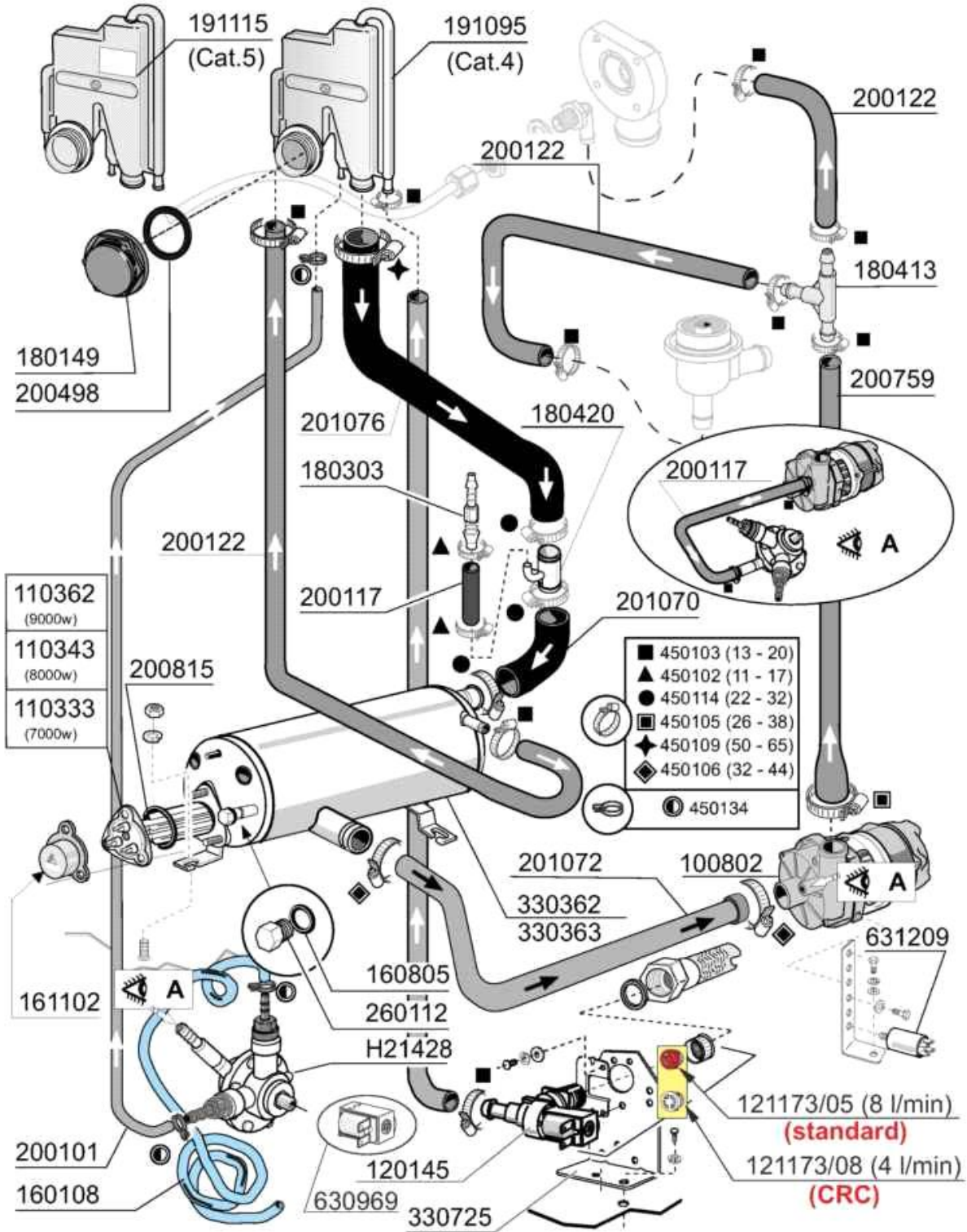
11 - 2010 M. S.

Code	Description	Price (€)
160737	PLUG HEYCO D.34,9	
190149	REINFORCEMENT FOR HANDLE SUPP.	
190607	HANDLE BUSH C30-70	
191013	HINGE F. SUPPORT C30-C70	
191014	FLANGE F. HANDLE C30-70	
330241	SPRING ROD	
331037	HANDLE C95-155-165 ISOLATED	
340493	PIN F. HINGE C30	
391316	SPRING FOR HANDLE C85/140-G75	
530244	RACK SUPPORT	



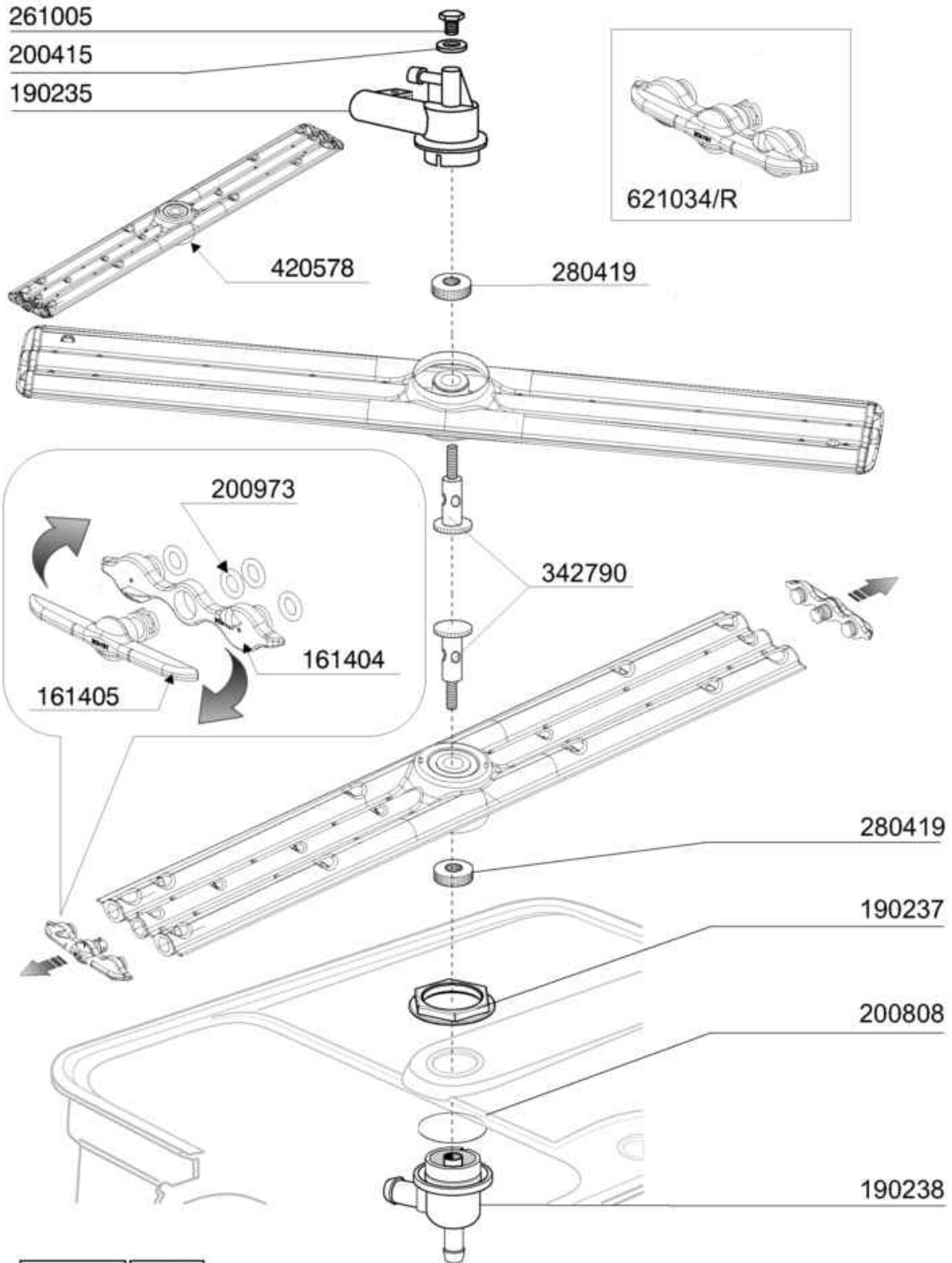
09 - 2012 M. S.

Code	Description	Price (€)
160113	TUBE IN POL. RETIC. 12 EST	
180409	UPPER CONNECTOR F. WASHING C30	
180413	TEE NIPPLE D.11,5 - RINSE ASSE	
190232	LOWER ARM SUPPORT FC2006	
190235	UPPER ARM SUPPORT	
190312	NIPPLE CONNECTION 1/2"	
190352	CONNECTION	
190353	CONNECTION	
200122	HOSE 11X19	
200434	GASKET CONNECTION C30 R50	
200435	GASKET WASH.F2 D.40 C30-70	
200927	GASKET FOR AIR TRAP	
201100	OUTLET HOSE	
201101	OUTLET HOSE	
270121	NUT FOR AIR TRAP	
330342	BOILER C1000/1300-FC-LC	
330362	BOOSTER FOR BREAK TANK	
350986	PUMP SUPPORT	
420310	LOW./UPP.WASH PIPE C30 - 70	
450103	CLAMP FE ZN. 13-20 H=9	

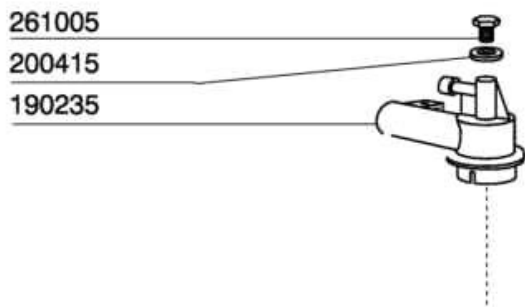


09-2015 | M. SA.

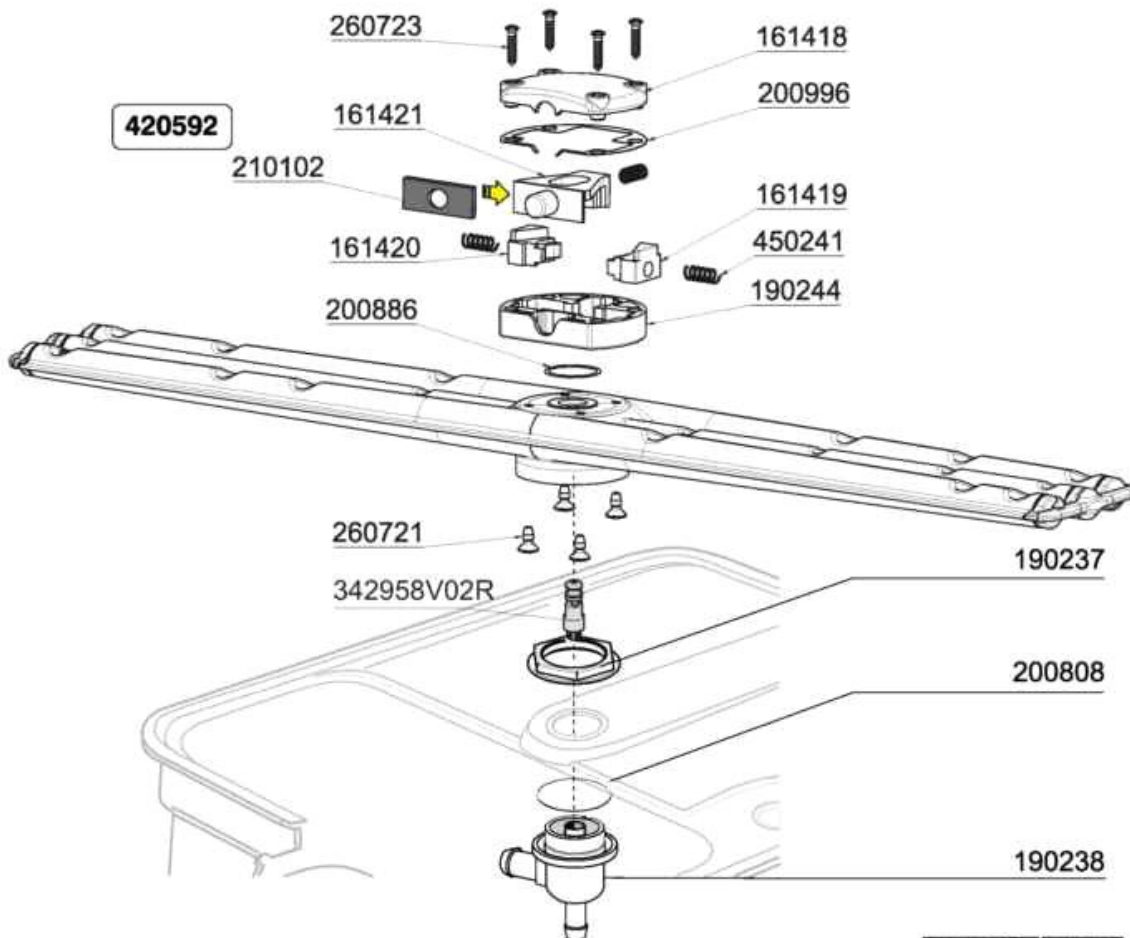
Code	Description	Price (€)
100802	PUMP HP 0,3 230V-50HZ	
110333	HEATER 7KW 230/400V	
110343	HEAT.ELEM. 8000W 220/380V	
110362	HEAT.ELEMENT 9000W 220/380V	
120145	SOLENOID VALVE 12 LT 1 WAY	
121173/05	FLUX REGULATOR 8 l/min RED	
121173/08	FLUX REGULATOR 4,5l/min WHITE	
160108	INJECT.INLET HOSE D.8X5	
160805	GASKET D.8	
161102	ELEMENT COVER MOPL. H50 (HIGH)	
180149	PLASTIC NUT	
180303	DOUBLE HOSE BARB	
180413	TEE NIPPLE D.11,5 - RINSE ASSE	
180420	TEE-NIPPLE	
191095	CONTAINER FOR BREAK TANK	
191115	BREAK TANK	
200101	RUBBER TUBE 25X35	
200117	RUBBER HOSE 7X16	
200122	HOSE 11X19	
200498	GASKET	
200759	DELIVERY HOSE FOR ECORINSE AC-	
200815	O-RING F. HEAT. ELEM.	
201070	HOSE	
201072	HOSE	
201076	HOSE	
260112	STAINLESS STEEL TE-SCREW 8X16	
330362	BOOSTER FOR BREAK TANK	
330363	BOILER FOR BREAK TANK	
330725	STANDARD BRACKET F.SOLEN.VALV	
450102	CLAMP FE ZN 11-17 H=9	
450103	CLAMP FE ZN. 13-20 H=9	
450105	CLAMP FE ZN. 26-38 H=12,2	
450106	CLAMP FE ZN 32-44 H=12,2	
450109	CLAMP 50-65	
450114	CLAMP FE ZN.22-32 H=12,2	
450134	ELASTIC HOSE CLIP D.9,3/8,8	
630969	COIL S4216 220/50HZ	
631209	ANTI-NOISE FILTER	
H21428	RINSE AID INJECTOR	



Code	Description	Price ()
161404	PLUG	
161405	PLUG	
190235	UPPER ARM SUPPORT	
190237	NUT	
190238	LOWER TEE WASH/RIN ARM	
200415	AIR TRAP GASKET -F2 18,5X10X3	
200808	OR GASKET 3,53X50,80X57,86	
200973	JOINT OR 1.78x5.28	
261005	SCREW F. TEE UP.WASH F2-B41	
280419	LOCK NUT	
342790	RINSE SUPPORT	
420578	REPLACED BY 420592+342958V02R	
621034/R	WRIS ARM PLUG	

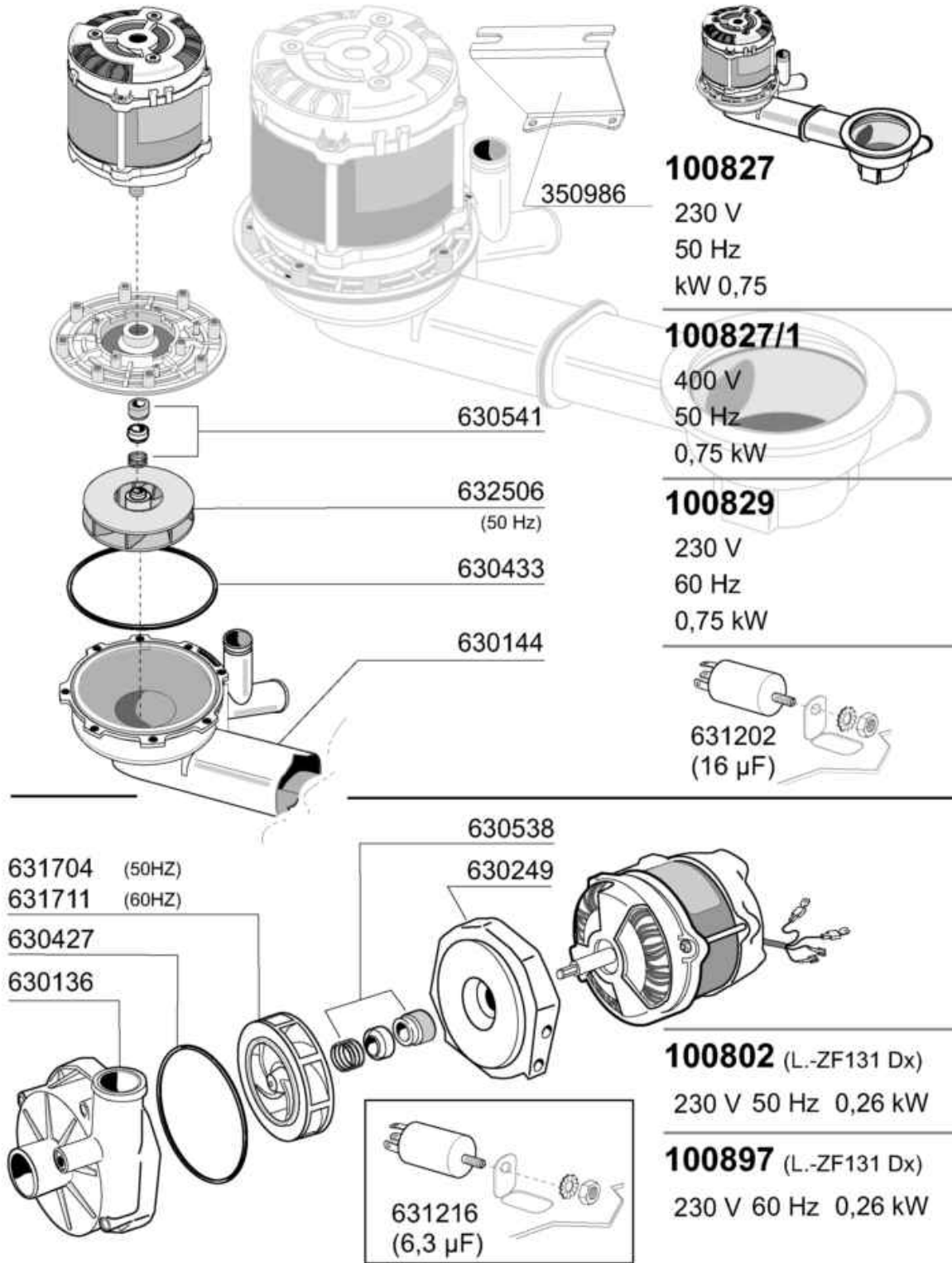


Dalla Matricola - From serial number
A partir da la matr. - Ab Seriennr.
Despues la matr.
....2770/03/17



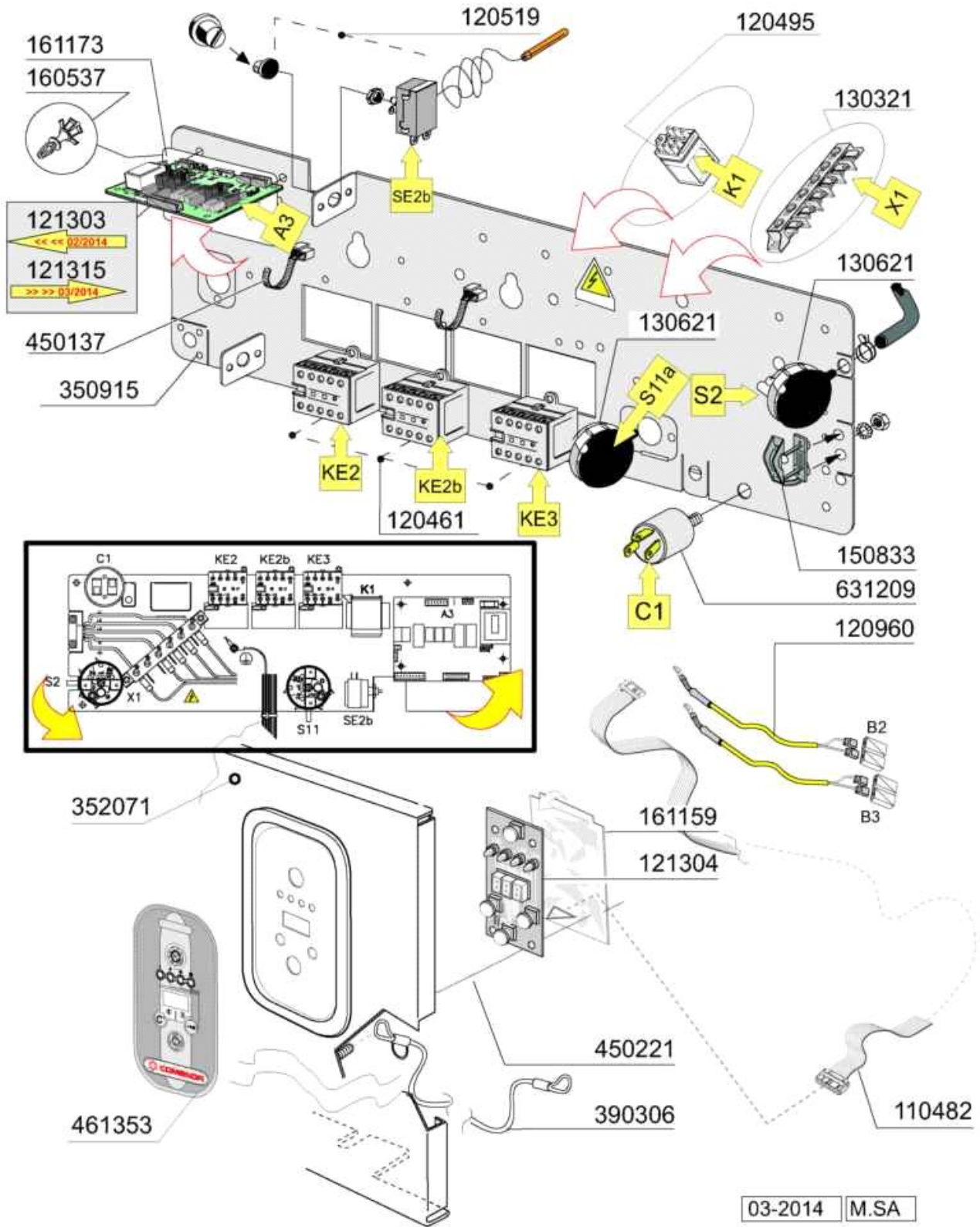
03-2017 M. SA.

Code	Description	Price (€)
161418	WASH ARM COVER	
161419	WASHARM RIGHT CLAMP	
161420	WASHARM LEFT CLAMP	
161421	WASHARM CLAMP RELEASE	
190235	UPPER ARM SUPPORT	
190237	NUT	
190238	LOWER TEE WASH/RIN ARM	
190244		
200415	AIR TRAP GASKET -F2 18,5X10X3	
200808	OR GASKET 3,53X50,80X57,86	
200886	JOINT D.20X1	
200996	SYLICON JOINT	
210102	SYLICON FLAT JOINT	
260721	SCREW TC 3,5X9,5	
260723	SCREW D3,5X16	
261005	SCREW F. TEE UP.WASH F2-B41	
342958V02R	COMPL. SHAFT F.WRIS ARM 420592	
420592		
450241	CLAMP SPRING	

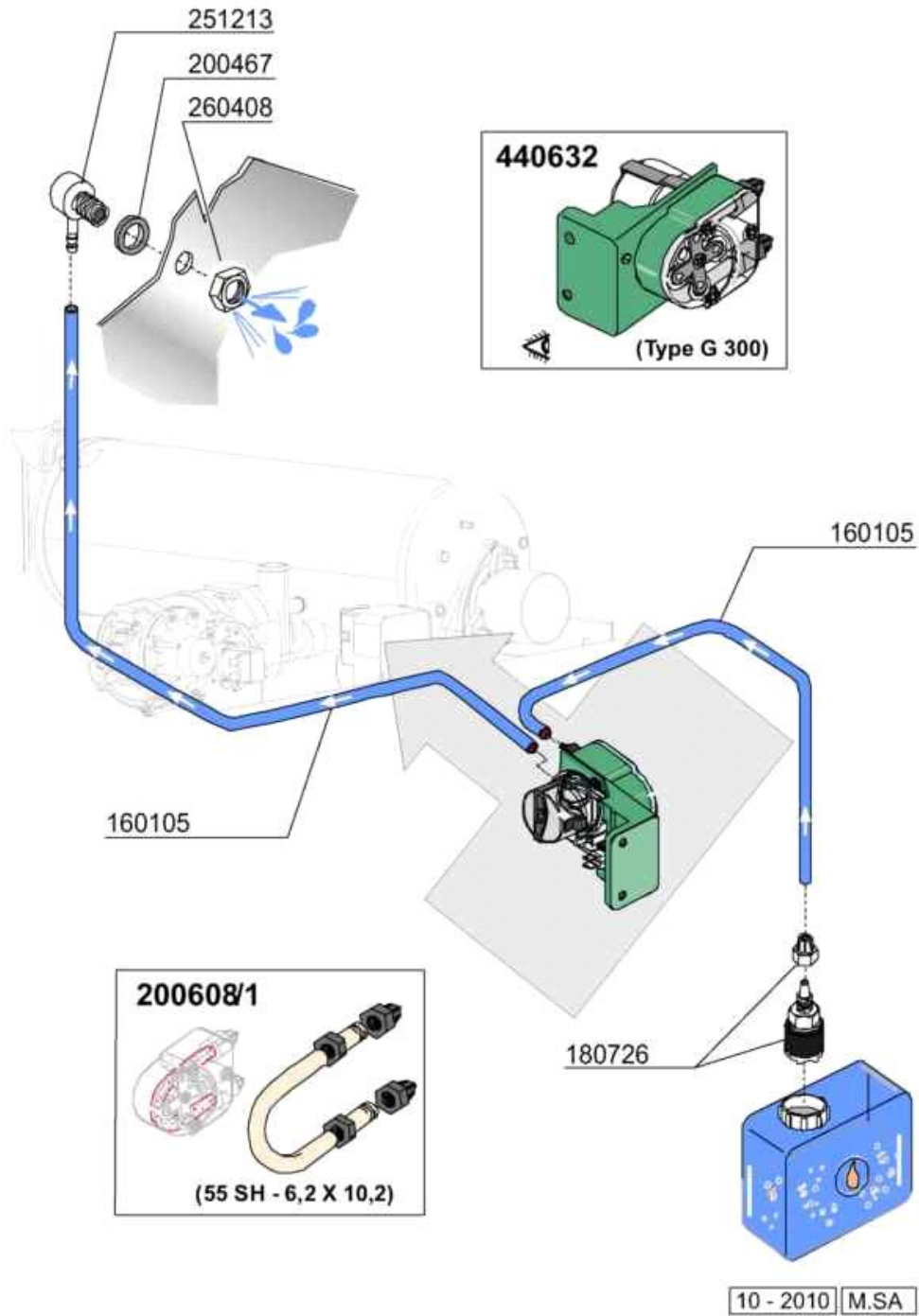


10 - 2010 | M. SA.

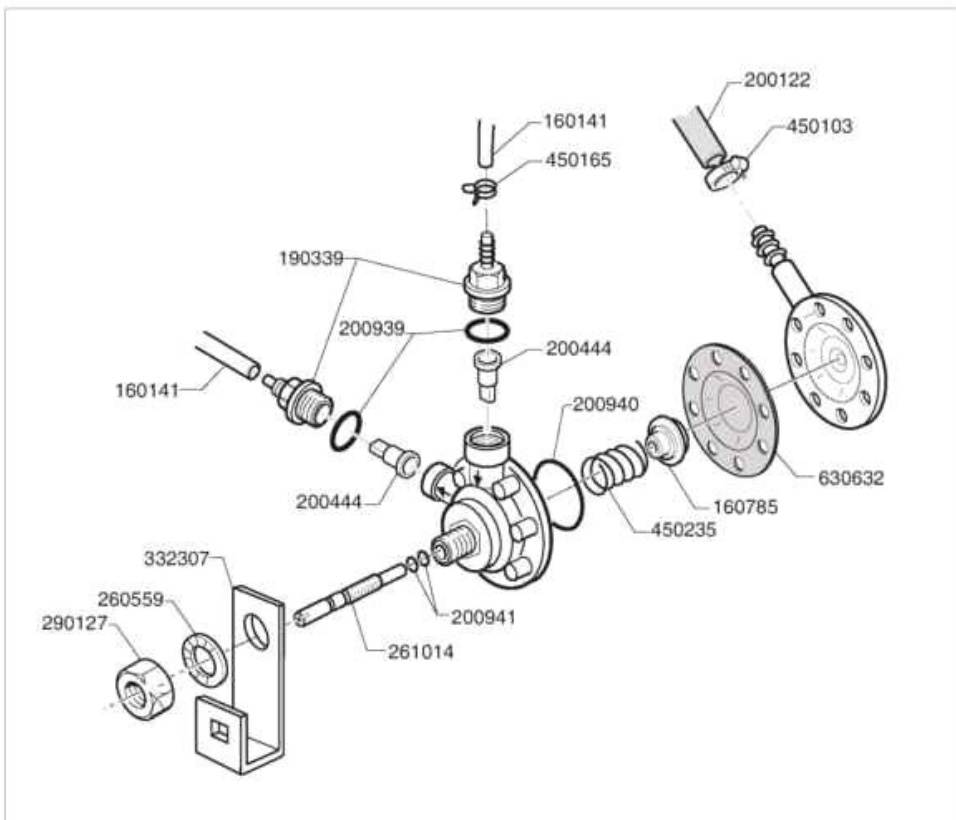
Code	Description	Price (€)
100802	PUMP HP 0,3 230V-50HZ	
100827	WASH PUMP HP0,6 FC2006	
100827/1	PUMP HP 0,6 LGB FC06 400/3/50	
100829	PUMP HP 0,6 LGB FC06 60HZ	
100897	PUMP HP 0,3 230V-60HZ	
350986	PUMP SUPPORT	
630136	PUMP VOLUTE LGB ZF131DX	
630144	PUMP VOLUTE	
630249	PUMP FLANGE ZF131 DX	
630427	O-RING FOR PUMP ZF131DX	
630433	GASKET FOR PUMP 100827	
630538	SEAL LGBZF131DX	
630541	SEAL FOR PUMP 100827	
631202	CONDENSER 16 MF 450V	
631216	CAPACITOR 6.3 MF 450V	
631704	PUMP IMPELLER ZF131DX	
631711	IMPELLER LGB ZF131DX 60HZ D.66	
632506	PUMP IMPELLER 100827 50HZ	



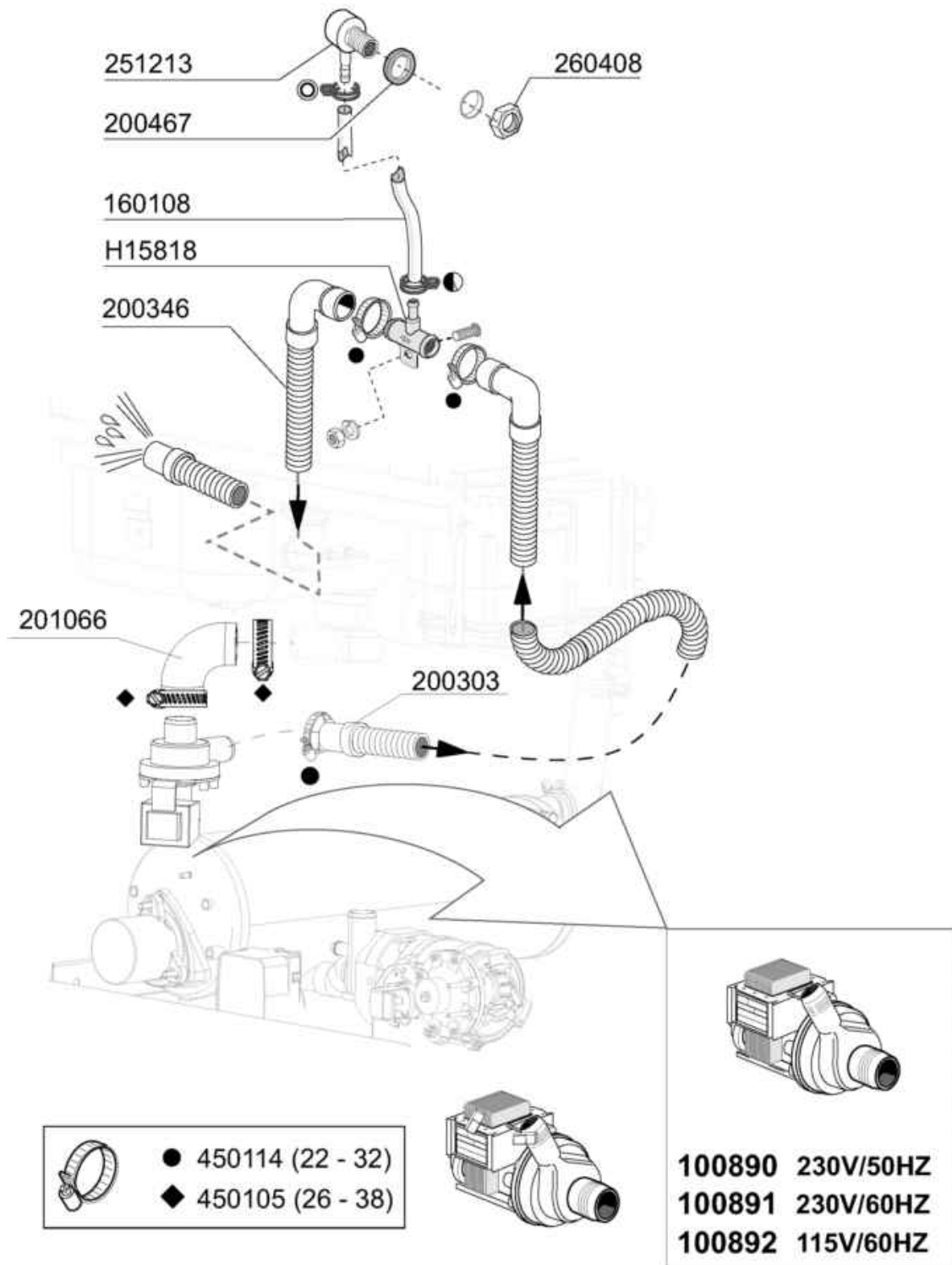
Code	Description	Price (€)
110482	CABLE FOR PCB FC-C-GE	
120461	CONTACTOR ABB B6-30-01 220V	
120495	RELAY 16A 220V	
120519	SAFETY THERMOSTAT 95-125°	
120960	PROBE C-G	
121303	PCB STROBILIA FCE	
121304	C-GE 2009 PCB	
121315	PCB FEHR 2010	
130321	JUNCTION BOX 6 CONNECTORS	
130621	PRESSURE SWITCH FOR BC HR 45/2	
150833	CABLE HOLDER BC/BR	
160537	ELECTRONIC CARD SPACER	
161159	PROTECT. COMMANDS SWITCHBOARD	
161173	COVER	
350915	CONTROL PANEL SUPPORT	
352071	FRONT PANEL	
390306	CABLE	
450137	COLLAR CONNECTION WITH BASE 31	
450221	SPRING FOR ELECTRONIC TIMER	
461353	PLATE C-GE ELECTRONIC	
631209	ANTI-NOISE FILTER	



Code	Description	Price (€)
160105	INJECT.INLET RED HOSE D.6X4	
180726	STREINER FOR RINSE AID INJECTO	
200467	DUTRAL GASKET F. AIR TRAP	
200608/1	HOSE FOR DISPENSER GERMAC G300	
251213	INJECTOR S/S FOR DETERGENT IN	
260408	S/S NUTS D.12	
440632	DETERGENT INJECTOR	



Code	Description	Price (€)
160141	HOSE 4X7	
160785	GUIDE FOR SPRING RINSE AID INJ	
190339	RINSE AID INJECTOR CONNECTION	
200122	HOSE 11X19	
200444	SUCTION VALVE RINSE INJECTOR	
200939	OR GASKET	
200940	GASKET	
200941	OR GASKET	
260559	FLAT WASH A2D.12 DIN6798	
261014	SCREW	
290127	DISPENSER FIXING NUT	
332307	BRACKET	
450103	CLAMP FE ZN. 13-20 H=9	
450165	ELASTIC HOSE CLIP 7,3-7,8	
450235	SPRING RINSE AID INJECTOR	
620879	RINSE AID INJECTOR	
630632	DIAPHRAGM RINSE INJECTOR HVD	



10 - 2010 M.S.A.

Code	Description	Price (€)
100890	DRAIN PUMP 30W 220/50	
100891	DRAIN PUMP 30W 220/60	
100892	DRAIN PUMP 30W 115V/1/60Hz	
160108	INJECT.INLET HOSE D.8X5	
200303	CONNECTION HOSE FOR DRAIN PUMP	
200346	DRAIN HOSE GLASSWASHER	
200467	DUTRAL GASKET F. AIR TRAP	
201066	INLET HOSE LB DRAIN PUMP	
251213	INJECTOR S/S FOR DETERGENT IN	
260408	S/S NUTS D.12	
450105	CLAMP FE ZN. 26-38 H=12,2	
450114	CLAMP FE ZN.22-32 H=12,2	
H15818	DISCHARGE VALVE	



FOODSERVICE EQUIPMENT SPARES LTD

UNIT 4 SANDBROOK PARK, SANDBROOK WAY, ROCHDALE, OL11 1RY

01706 353 633

SALES@FOODSERVICESPARES.COM



WWW.FOODSERVICESPARES.COM