



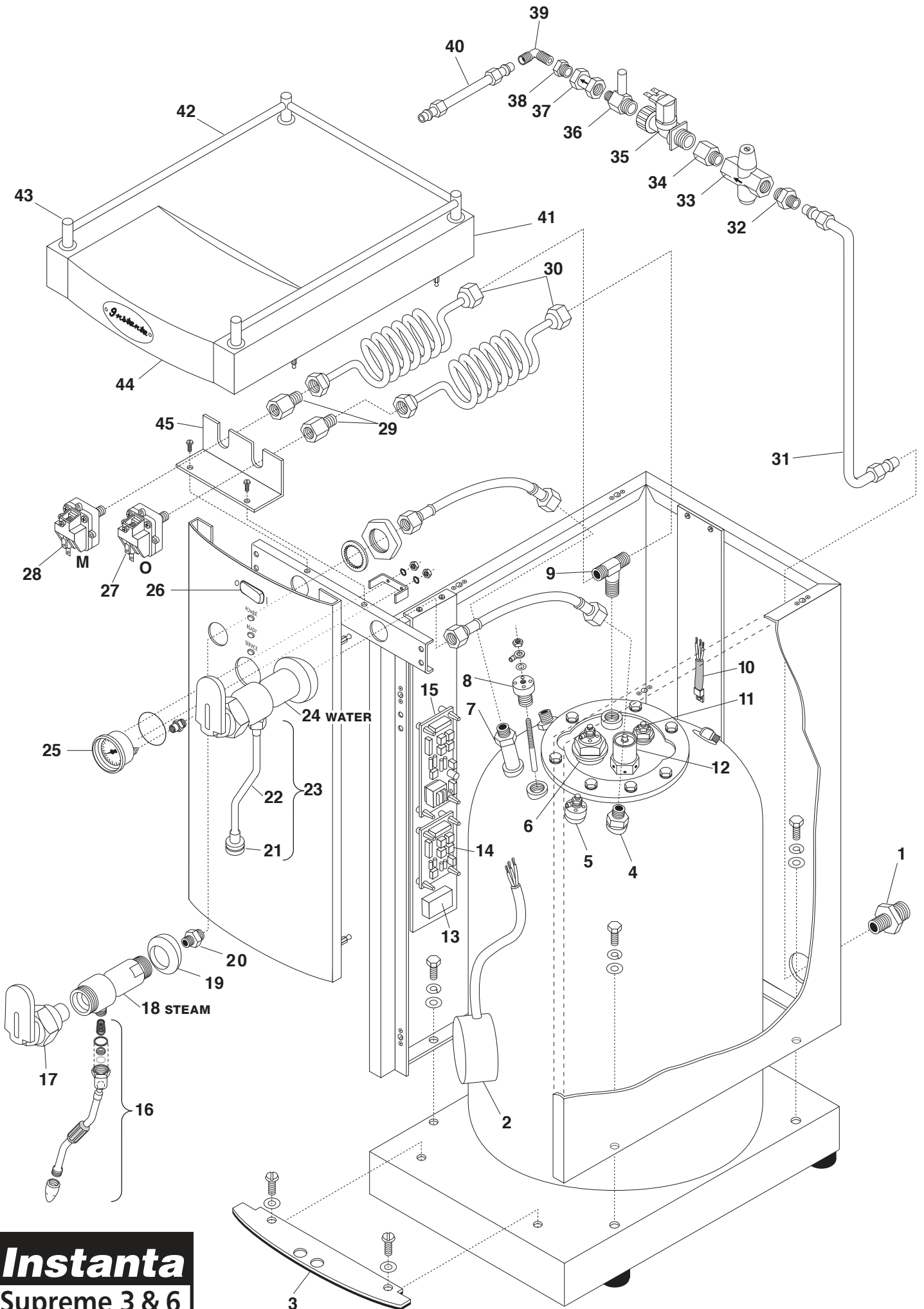
TECHNICAL **DIAGRAMS**



SUPREME-3-6

01706 353 633

WWW.FOODSERVICESPARES.COM



Instanta
Supreme 3 & 6

WB2 & WB2-6 Supreme - EXPLODED DRAWING - KEY:		
Drawing No	Description	Part No
1	Chromed 3/4" BSP rear water inlet fitting.	BV11/A/C
2	Heating element (3.0kw, 230V)	E280
3	Curved vent plate c/w rubber seal	Ring Spares
4	Steam syphon pipe (before Serial No. N07460 & P07619)	SP2/A
5	Normal operating level sensor (black wire)	PRB3/A
6	Brass probe holder c/w "Overfill" level sensor (orange wire)	B307
7	Water syphon pipe	H/TUBE3
8	Low-level sensing probe (yellow wire)	PRB8/A
9	Brass "T" piece	H/FF122
10	Triac (used to switch power to heater(s) via a signal from PCB)	XE851 (3Kw) XE854 (6Kw)
11	Anti-vacuum & air release valve	V600/B
12	Safety valve (set to blow @ 25p.s.i.)	SV206
13	Mains connector block	E1255
14	Safety "Trip" P.C.B.	FF851
15	Main P.C.B.	FF850
16	Steam dispense wand (see separate drawing for more detail)	DA105/A
17	Upper tap handle assembly	TP801
18	Draw-off tap body - Steam	TP800/S
19	Grey plastic tap collar	XEN303/HT
20	3/8" to 1/4" brass adaptor	F305/TP
21	Water "aerator" spray & adaptor	H/FF102 & H/FF101
22	Water dispense arm	DA104
23	Water dispense arm complete (see separate drawing)	DA104/A
24	Draw-off tap body - Water	TP800
25	Pressure gauge	PG11
26	ON/OFF switch	XEN400
27	Over-ride pressure-switch (purple wires)	EN266N
28	Mains pressure-switch (orange wires)	EN264N
29	Brass flare fitting for pressure switch	H/FF132N
30	Capillary tube(s) to pressure switches	E270B
31	Lower water inlet pipe (5/16" copper)	Ring Spares
32	1/2" to 1/4" brass reducer	BV20
33	Pressure reduction valve	PR5
34	Solenoid inlet adapter	SA14/IN
35	Solenoid valve	SOL14
36	Solenoid outlet adapter	SA14/M
37	Non-return valve	NR52
38	1/2" to 1/4" female adapter	B507
39	Brass elbow	H/FF113
40	Upper water inlet pipe (5/16" copper)	Ring Spares
41	Lid	Ring Spares
42	Chromed lid rail	LRB1
43	Chromed lid pillar	LPB1 (back) LPF1 (front)
44	Plastic top/front facia	XEN305/G
45	Pressure switch bracket	Ring Spares



FOOD SERVICE SPARES LTD

UNIT 4 SANDBROOK PARK, SANDBROOK WAY, ROCHDALE, OL11 1RY

01706 353 633

SALES@FOODSERVICESPARES.COM



WWW.FOODSERVICESPARES.COM