



# TECHNICAL DIAGRAMS

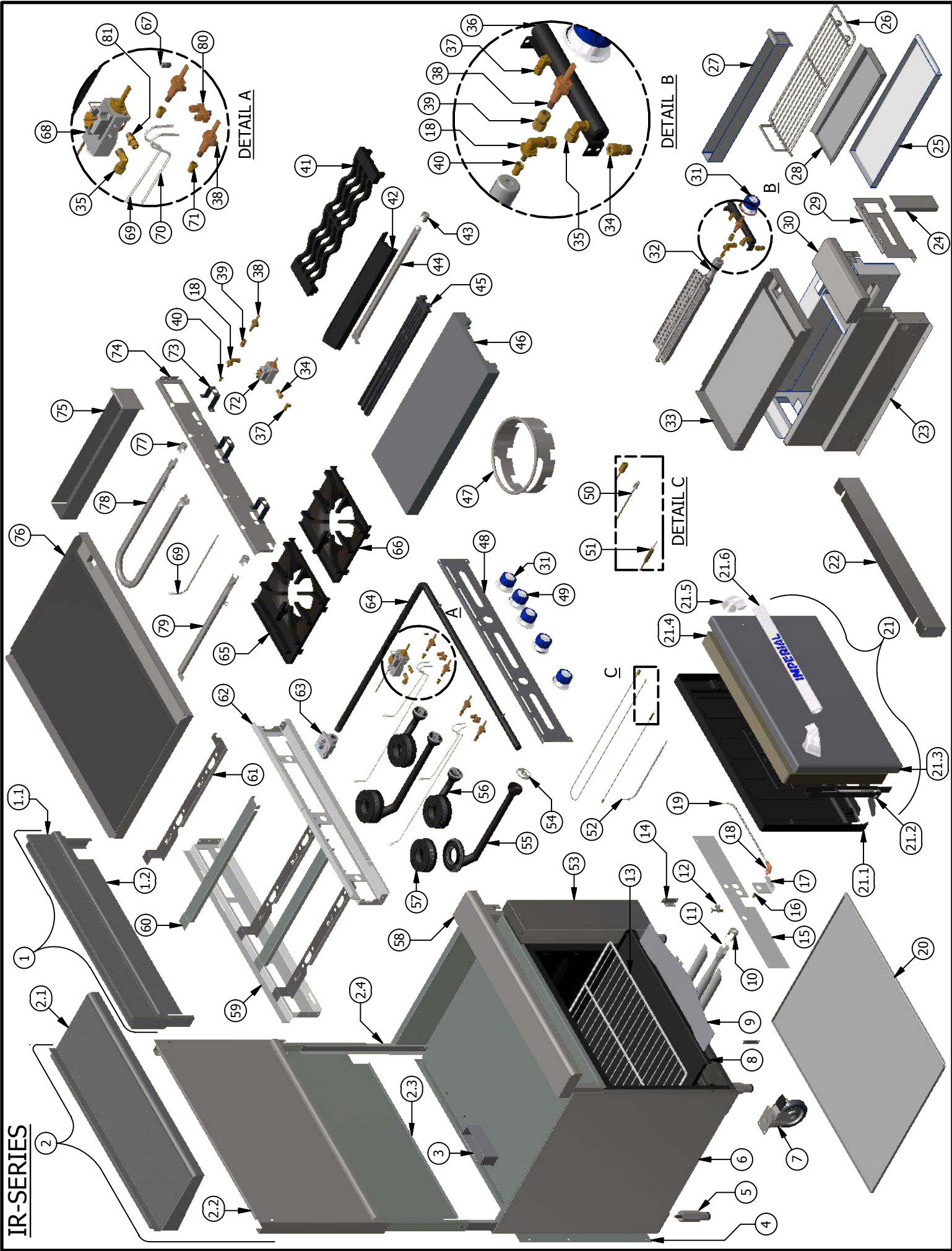


SUR-65-BG

01706 353 633

[WWW.FOODSERVICESPARES.COM](http://WWW.FOODSERVICESPARES.COM)

**IR-SERIES**



## IR Series

ITEM	DESCRIPTION	PART NO.	24"	36"	48"	60"	72"
<b>1</b>	24" STUB BACK ASSEMBLY (INCLUDES ITEM 1.1 & 1.2)	21175	1	-	-	-	-
***	36" STUB BACK ASSEMBLY (INCLUDES ITEM 1.1 & 1.2)	21176	-	1	-	-	-
***	48" STUB BACK ASSEMBLY (INCLUDES ITEM 1.1 & 1.2)	21177	-	-	1	-	-
***	60" STUB BACK ASSEMBLY (INCLUDES ITEM 1.1 & 1.2)	21178	-	-	-	1	-
***	72" STUB BACK ASSEMBLY (INCLUDES ITEM 1.1 & 1.2)	21179	-	-	-	-	1
<b>1.1</b>	24" STUB FRONT	20265	1	-	-	-	-
***	36" STUB FRONT	20266	-	1	-	-	-
***	48" STUB FRONT	20267	-	-	1	-	-
***	60" STUB FRONT	20362	-	-	-	1	-
***	72" STUB FRONT	20363	-	-	-	-	1
<b>1.2</b>	24" OUTSIDE BACK (GALV.)	20991	1	-	-	-	-
***	36" OUTSIDE BACK (GALV.)	20992	-	1	-	-	-
***	48" OUTSIDE BACK (GALV.)	20993	-	-	1	-	-
***	60" OUTSIDE BACK (GALV.)	20994	-	-	-	1	-
***	72" OUTSIDE BACK (GALV.)	20995	-	-	-	-	1
<b>2</b>	24" BACKGUARD ASSEMBLY (INCLUDES ITEMS 2.1 - 2.4)	21200	1	-	-	-	-
***	36" BACKGUARD ASSEMBLY (INCLUDES ITEMS 2.1 - 2.4)	21201	-	1	-	-	-
***	48" BACKGUARD ASSEMBLY (INCLUDES ITEMS 2.1 - 2.4)	21202	-	-	1	-	-
***	60" BACKGUARD ASSEMBLY (INCLUDES ITEMS 2.1 - 2.4)	21203	-	-	-	1	-
***	72" BACKGUARD ASSEMBLY (INCLUDES ITEMS 2.1 - 2.4)	21204	-	-	-	-	1
<b>2.1</b>	24" SHELF	21190	1	-	-	-	-
***	36" SHELF	21191	-	1	-	-	-
***	48" SHELF	21192	-	-	1	-	-
***	60" SHELF	21193	-	-	-	1	-
***	72" SHELF	21194	-	-	-	-	1
<b>2.2</b>	24" HIGH SHELF FRONT	31645	1	-	-	-	-
***	36" HIGH SHELF FRONT	31646	-	1	-	-	-
***	48" HIGH SHELF FRONT	31647	-	-	1	-	-
***	60" HIGH SHELF FRONT	31648	-	-	-	1	-
***	72" HIGH SHELF FRONT	31649	-	-	-	-	1
<b>2.3</b>	24" HIGH SHELF BACK	21195	1	-	-	-	-
***	36" HIGH SHELF BACK	21196	-	1	-	-	-
***	48" HIGH SHELF BACK	21197	-	-	1	-	-
***	60" HIGH SHELF BACK	21198	-	-	-	1	-
***	72" HIGH SHELF BACK	21199	-	-	-	-	1
<b>2.4</b>	IR REINFORCEMENT CHANNEL (SET OF 2)	21130	1	1	1	1	1
<b>3</b>	IR FLUE BOX ASSEMBLY	21125	1	1	2	2	2
<b>4</b>	IR-24 BACK PANEL	31585	1	-	-	-	-
***	IR-36 BACK PANEL	31586	-	1	-	-	-
***	IR-48 BACK PANEL	31587	-	-	1	-	-
***	IR-60 BACK PANEL	31588	-	-	-	1	-
***	IR-72 BACK PANEL	31589	-	-	-	-	1
<b>5</b>	6" ADJUSTABLE S/S LEG	37784	4	4	4	4	6
<b>6</b>	SIDE PANEL L/H	31617	1	1	1	1	1
***	SIDE PANEL R/H	31618	1	1	1	1	1
***	IR-RG SIDE PANEL (L/R)	31377	-	1	-	-	-
<b>7</b>	PLATE CASTER WITH BREAK (FRONT)	1061	2	2	2	2	3
***	PLATE CASTER (REAR)	1060	2	2	2	2	3

## IR Series

ITEM	DESCRIPTION	PART NO.	24"	36"	48"	60"	72"
8	IR-24" BOTTOM LINER (PORCELAINIZED)	20268	1	-	2	-	-
***	IR-36" BOTTOM LINER (PORCELAINIZED)	9047	-	1	-	2	2
***	OVEN BOTTOM RETAINER	31597	1	1	2	2	2
9	24" FLAME SPREADER	31583	1	-	2	-	-
***	36" FLAME SPREADER	31584	-	1	-	2	2
10	OVEN/GRIDDLE BURNER U SHAPE AIR SHUTTER	1037	1	1	2	2	2
11	OVEN/GRIDDLE BURNER U SHAPE	2099	1	1	2	2	2
12	OVEN PILOT	1291	1	1	2	2	2
***	OVEN PILOT BRACKET	30921	1	1	2	2	2
***	PILOT BELL ORIFICE (NAT)	1017	1	1	2	2	2
***	PILOT BELL ORIFICE (LP)	1018	1	1	2	2	2
13	IR-OVEN RACK (19-3/4" X 25")	2120	1	-	2	-	-
***	IR-OVEN RACK (26-3/8" X 25")	2130	-	1	-	2	2
14	KICK PLATE BRACKET	30857	2	2	4	4	4
15	24" FRONT OVEN BAFFLE	31600	1	-	2	-	-
***	36" FRONT OVEN BAFFLE	31601	-	1	-	2	2
16	20" OVEN #49 ORIFICE (NAT)	2074	1	-	2	-	-
***	26-1/2" OVEN #36 ORIFICE (NAT)	2061	-	1	-	2	2
***	20" OVEN #53 ORIFICE (LP)	2076	1	-	2	-	-
***	26-1/2" OVEN #50 ORIFICE (LP)	2065	-	1	-	2	2
17	OVEN ORIFICE BRACKET	33029	1	1	2	2	2
18	ORIFICE MIXER ELBOW	37188	1	1	2	2	2
19	FLEX TUBING (3/8" X 69")	34679-69	1	1	2	2	2
20	24" CRUMB TRAY	34683-1	1	-	2	1	-
***	36" CRUMB TRAY	34683-2	-	1	-	1	2
21	24" IR DOOR ASSEMBLY (INCLUDES PARTS 20.1 - 20.5)	2685	1	-	2	-	-
***	36" IR DOOR ASSEMBLY (INCLUDES PARTS 20.1 - 20.5)	2688	-	1	-	2	2
21.1	20" OVEN DOOR LINER (PORCELAINIZED)	9030	1	-	2	-	-
***	26-1/2" OVEN DOOR LINER (PORCELAINIZED)	2128	-	1	-	2	2
21.2	20" DOOR CLOSING MECHANISM	20160	1	-	2	-	-
***	26-1/2" DOOR CLOSING MECHANISM	20161	-	1	-	2	2
21.3	DOOR COVER (20" OVEN)	2687	1	-	2	-	-
***	DOOR COVER (26-1/2" OVEN)	2689	-	1	-	2	2
21.4	DOOR INSULATION (20" OVEN)	8040-2	1	-	2	-	-
***	DOOR INSULATION (29-1/2" OVEN)	8040-1	-	1	-	2	2
21.5	END CAP (R/H)	36101	1	1	2	2	2
***	END CAP (L/H)	36102	1	1	2	2	2
21.6	20" OVEN DOOR HANDLE	36099	1	-	2	-	-
***	26-1/2" OVEN DOOR HANDLE	36100	-	1	-	2	2
22	24" KICK PLATE	20142	1	-	2	-	-
***	36" KICK PLATE	20143	-	1	-	2	2
23	IR-RG SIDE PANEL "A" (R/H)	30905	1	1	1	1	1
***	IR-RG SIDE PANEL "A" (L/H)	31378	1	1	1	1	1
24	RG FRONT TRIM (L/R)	30911	-	1	-	-	-
25	12" IR-RG CRUMBTRAY	20017	1	1	1	1	1
***	24" IR-RG CRUMBTRAY	20018	1	1	1	1	1
26	12" IR-RG RACK	2024	1	1	1	1	1
***	24" IR-RG RACK	2025	1	1	1	1	1

## IR Series

ITEM	DESCRIPTION	PART NO.	24"	36"	48"	60"	72"
27	IR-RG GREASE CAN	20042	1	1	1	1	1
28	12" DRIP PAN FOR RG BROILER	20014	1	1	1	1	1
***	24" DRIP PAN FOR RG BROILER	20015	1	1	1	1	1
29	12" RG VALVE COVER	31390	1	1	1	1	1
***	24" RG VALVE COVER	31392	1	1	1	1	1
30	12" RG LANDING LEDGE	21168	1	1	1	1	1
***	24" RG LANDING LEDGE	21160	1	1	1	1	1
31	RESTAURANT SERIES, OPEN BURNER	36330	1-4	1-6	1-8	1-10	1-12
32	IR-RG BURNER ASSEMBLY	20125	1-2	1-2	1-2	1-2	1-2
***	WIRE MESH FOR RAISED GRIDDLE/BROILER (SET OF 2)	20126	1-2	1-2	1-2	1-2	1-2
33	12" IR-RG GRIDDLE ASSEMBLY	CALL FACTORY	1	1	1	1	1
***	12" IR-RG GRIDDLE ASSEMBLY	20012	1	1	1	1	1
***	24" IR-RG GRIDDLE ASSEMBLY (R/H)	33357	-	1	1	1	1
***	24" IR-RG GRIDDLE ASSEMBLY (L/H)	38178	-	1	1	1	1
34	3/8 C X MIP 1/4 MALE CONNECTOR BRASS	30293	1	1	1	1	1
35	3/8 C MIPL 1/4 90 DEGREE ELBOW BRASS	30292	1	1	1	1	1
36	12" RG GAS MANIFOLD (SPECIFY SIDE)	CALL FACTORY	1	1	1	1	1
***	24" RG GAS MANIFOLD (SPECIFY SIDE)	0905-1	1	1	1	1	1
37	SINGLE PILOT ADJUSTING VALVE	1604	1-2	1-2	1-2	1-2	1-2
38	BURNER GAS VALVE	1610	4	6	8	10	12
39	3/8-27 X 3/8 CC VALVE ADAPTER	30286	1-2	1-3	1-4	1-5	1-6
***	#50 ORIFICE (NAT) (GRIDDLE AND BROILER)	2065	1-2	1-3	1-4	1-5	1-6
***	#56 ORIFICE (LP) (GRIDDLE AND BROILER)	2068-1	1-2	1-3	1-4	1-5	1-6
41	S GRATE (6" X 24") TOP GRATE FOR IR-RANGE	33502	4	6	8	10	12
42	19 1/2" RADIANT COVER	37187	4	6	8	10	12
***	BROILER LINER ASSY.	CALL FACTORY	1	1	1	1	1
43	STRAIGHT BURNER AIR SHUTTER	1024	1-4	1-6	1-8	1-10	1-12
44	STRAIGHT BURNER	1020	1-4	1-6	1-8	1-10	1-12
45	TOP GRATE, 3 BAR (3" X 21")	1201	3-7	3-11	3-15	3-19	3-23
46	IR HOT TOP (12" X 24")	5009	2	3	4	5	6
47	WOK RING	38707	Opt	Opt	Opt	Opt	Opt
48	24" VALVE COVER	37017	1	-	-	-	-
***	36" VALVE COVER	37018	-	1	-	-	-
***	48" VALVE COVER	37019	-	-	1	-	-
***	60" VALVE COVER	37020	-	-	-	1	-
***	72" VALVE COVER	37021	-	-	-	-	1
49	IR OVEN THERMOSTAT KNOB	36328	1	1	2	2	2
50	48" THERMOCOUPLE EXTENSION	36016	1	1	2	2	2
51	18" THERMOCOUPLE	36017	1	1	2	2	2
52	IR - 3/16 X 66" S/S FLEX TUBING	37001-66	1	1	2	2	2
53	CONTROL PANEL (R/H)	20110	-	1	-	-	1
***	CONTROL PANEL (L/H)	20111	-	-	-	-	1
***	CONTROL PANEL MOUNTING BRACKET	30877	-	1	-	-	2
54	OPEN BURNER AIR SHUTTER	1007	4	6	8	10	12
55	OPEN BURNER VENTURI (BACK)	38052	2	3	4	5	6
56	OPEN BURNER VENTURI (FRONT)	38051	2	3	4	5	6
57	BURNER HEAD	2680	4	6	8	10	12
***	WOK JET BURNER HEAD	1230-J	4	6	8	10	12

## IR Series

ITEM	DESCRIPTION	PART NO.	24"	36"	48"	60"	72"
***	SAUTE BURNER HEAD	1230-S	4	6	8	10	12
58	24" LANDING LEDGE ASSEMBLY	21160	1	-	-	-	-
***	36" LANDING LEDGE ASSEMBLY	21161	-	1	-	-	-
***	48" LANDING LEDGE ASSEMBLY	21162	-	-	1	-	-
***	60" LANDING LEDGE ASSEMBLY	31163	-	-	-	1	-
***	72" LANDING LEDGE ASSEMBLY	21164	-	-	-	-	1
59	24" REAR SUPPORT	31612	1	-	-	-	-
***	36" REAR SUPPORT	31613	-	1	-	-	-
***	48" REAR SUPPORT	31614	-	-	1	-	-
***	60" REAR SUPPORT	31615	-	-	-	1	-
***	72" REAR SUPPORT	31616	-	-	-	-	1
60	IR- TOP GRATE SUPPORT	21016	1	2	3	4	5
61	BURNER HANGER	37876	2	3	4	5	6
62	24" FRONT SUPPORT	31607	1	-	-	-	-
***	36" FRONT SUPPORT	31608	-	1	-	-	-
***	48" FRONT SUPPORT	31609	-	-	1	-	-
***	60" FRONT SUPPORT	31610	-	-	-	1	-
***	72" FRONT SUPPORT	31611	-	-	-	-	1
63	GAS PRESSURE REGULATOR (NAT)	38733	1	1	1	1	1
***	GAS PESSURE REGULATOR (LP)	38734	1	1	1	1	1
64	24" GAS MANIFOLD PIPE	1360	-	-	-	-	-
***	36" GAS MANIFOLD PIPE	1361	-	1	-	-	-
***	48" GAS MANIFOLD PIPE	0858	-	-	1	-	-
***	60" GAS MANIFOLD PIPE	0859	-	-	-	1	-
***	72" GAS MANIFOLD PIPE	0860	-	-	-	-	1
65	REAR TOP GRATE	38050	2	3	4	5	6
66	FRONT GRATE	38049	2	3	4	5	6
67	SQUARE HEAD PLUG 1/8"	30257	1	2	2	1	1
68	TEDDINGTON OVEN VALVE	36014	1	1	2	2	2
***	PILOT ADJUSTING VALVE	1607	1	1	2	2	2
***	STAINLESS STEEL CLIP	3038	2	2	4	4	4
69	FRONT PILOT ASSY.	35714	2	3	4	5	6
70	REAR PILOT ASSY.	35715	2	3	4	5	6
71	#41 ORIFICE (NAT) (OPEN BURNER)	2059	4	6	8	10	12
***	#53 ORIFICE (LP) (OPEN BURNER)	2076	4	6	8	10	12
72	GRIDDLE CONTROL VALVE (NON-SAFETY)	36015	1	2	2	3	3
***	3/8 X 1/4 COMP X MIP RUN TEE	38290	1	1	2	2	3
***	IR- GRIDDLE CONTROL KNOB	36571	1	2	2	3	3
73	IR-G-GRIDDLE ELBOW BRACKET	35897	1-2	1-3	1-4	1-5	1-6
74	GRIDDLE FRONT BAFFLE	CALL FACTORY	1	1	1	1	1
75	IR-GRIDDLE GREASE CAN	31721	1	1	1	1	2
76	12" GRIDDLE PLATE ASSY.	20006	1	1	1	1	1
***	24" GRIDDLE PLATE ASSY.	20007	1	1	1	1	1
***	36" GRIDDLE PLATE ASSY.	20008	1	1	1	1	1
***	48" GRIDDLE PLATE ASSY.	20009	1	1	1	1	1
***	60" GRIDDLE PLATE ASSY.	20010	1	1	1	1	1
***	72" GRIDDLE PLATE ASSY.	20011	1	1	1	1	1
77	AIR SHUTTER (USED WITH PART 1033 & 2095)	1037	1	2	3	4	5

## IR Series

ITEM	DESCRIPTION	PART NO.	24"	36"	48"	60"	72"
78	IR GRIDDLE BURNER -U -SHAPED	2095	1	2	3	4	5
79	IR-GRIDDLE BURNER ASSY.(I SHAPE)	1033	1	1	1	1	1
80	DOUBLE PILOT ADJUSTING VALVE	1003	2	3	4	5	6
81	STRAIGHT SINGLE ADJUSTING VALVE	1604	1-2	1-3	1-4	1-5	1-6



FOOD SERVICE SPARES LTD

UNIT 4 SANDBROOK PARK, SANDBROOK WAY, ROCHDALE, OL11 1RY

01706 353 633

SALES@FOODSERVICESPARES.COM



WWW.FOODSERVICESPARES.COM