



TECHNICAL **DIAGRAMS**

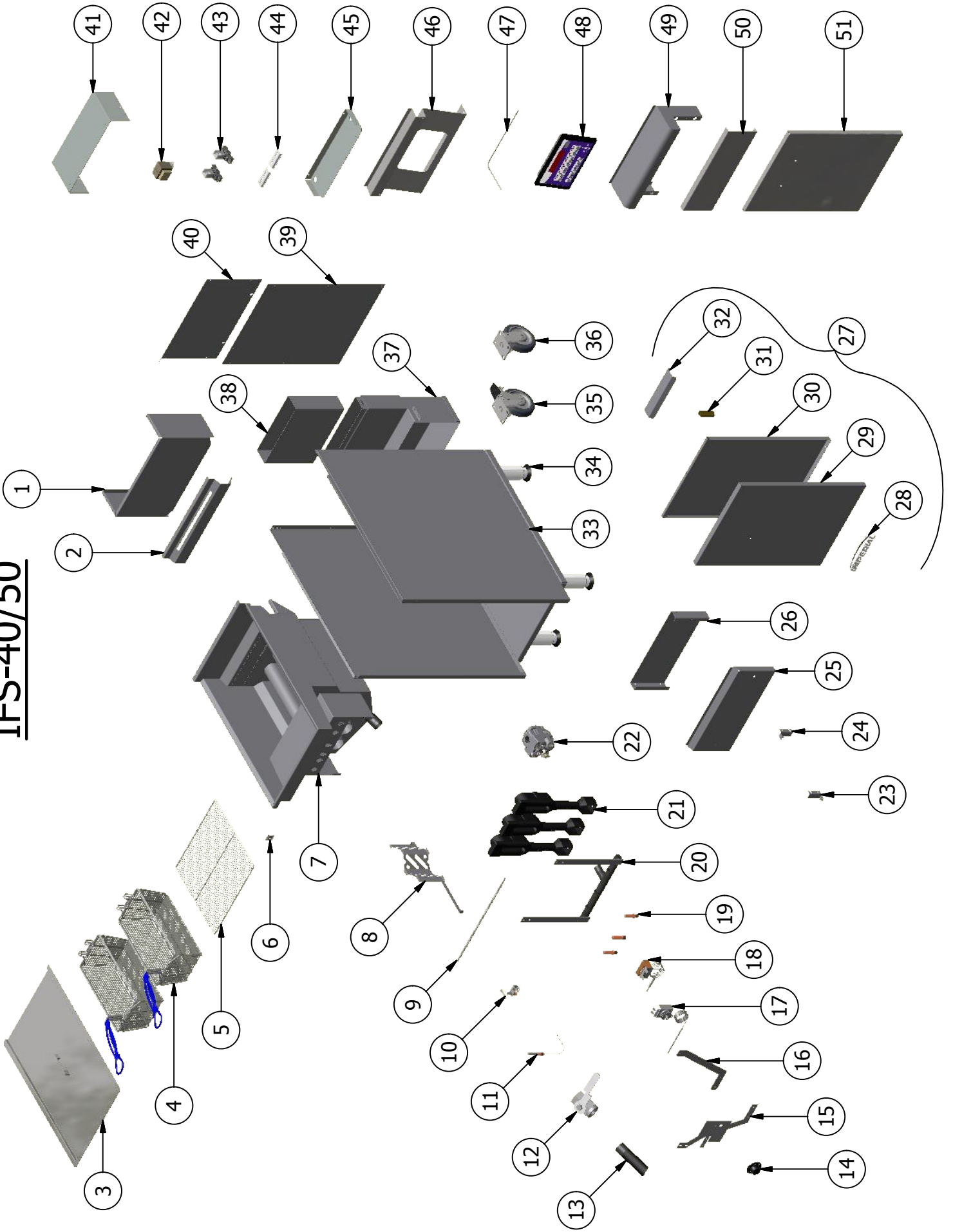


IFS-40

01706 353 633

WWW.FOODSERVICESPARES.COM

IFS-40/50



IFS-40/50 Fryer

ITEM	DESCRIPTION	PART NO.	PER VESSEL
1	IFS-40/50 PANEL VESSEL REAR	28056	1
2	IFS-40/50 BASKET HANGER	28074	1
3	IFS-40/50 VESSEL VAT COVER WITH HANDLE	28085	1
***	HANDLE FRYER COUNTER TOP/CHICKEN ADAPTER	1090	1
4	IFS-40/50 FRYER BASKET	2035	2
***	IFS-40/50 FULL SIZE FRYER BASKET	2036	1
5	FRYER CRUMB SCREEN	2038	1
6	FRYER PROBE HOLDER BRKT.	28077	1
7	IFS-40 VESSEL ASSY. S/S (3TUBE)	28005	1
***	IFS-50 VESSEL ASSY. S/S (4 TUBE)	28102	1
8	IFS-40/50 DIFFUSER ASSY.	0308	3-4
9	IFFS/IPC - 1/4 X 16" LG CORRIGATED S/S FLEX TUBING	34681-16	1
10	IFS-40/50/75 PILOT ASSY.	0310	1
***	#21 PILOT BELL ORIFICE (NAT)	2031-2	1
***	#11 PILOT BELL ORIFICE (LP)	32105	1
11	FRYER-THERMOPILE	1096	1
12	FRYER DRAIN VALVE	1623	1
13	IFS-40/50/75 DRAIN EXTENSION	30647M	1
14	FRYER THERMOSTAT DIAL	1176	1
15	IFS-40/50 MANIFOLD FRONT BRACKET L/H	33030-1	1
16	IFS-40/50 MANIFOLD FRONT BRACKET R/H	33030	1
17	FRYER-THERMOSTAT (200-400DEG.)	1175	1
18	FRYER HI LIMIT	1177	1
***	FRYER-CE HI LIMIT 425 DEG.	33497	1
19	FRYER ORIFICE, #36 (NAT GAS)	1625-36	3-4
***	FRYER ORIFICE, #51 (LPG GAS)	1625-51	3-4
20	IFS-40 3 TUBE FRYER MANIFOLD ASSY.	1365	1
***	IFS-50 4 TUBE FRYER MANIFOLD ASSY.	0304-1	1
21	FRYER BURNER (BOLT STYLE)	1225	3-4
***	FRYER BURNER BOLT (5/16 -18 X 1/2 HCS GR5 ZINC)	30337	6-8
22	FRYER-COMBO GAS VALVE (NAT)	1173	1
***	FRYER-COMBO GAS VALVE (LP)	1174-RS	1
***	COMB GAS VALVE KNOB	28328	1
23	IFS DOOR HINGE BOTTOM	28050	1
24	IFS DOOR HINGE TOP	28048	1
25	IFS-40/50 FRONT PANEL	28034	1
26	IFS-40/50 HEAT SHEILD	28035	1
27	IFS-40/50 CABINET DOOR ASSEMBLY	28044	1
28	LARGE IMPERIAL EMBLEM	37767	1
***	PUSH NUT	36569	2
29	IFS-40/50 DOOR PANEL	28045	1
30	IFS-40/50 DOOR LINER	28115	1
31	DOOR MAGNET FOR FRYER	1830	1
32	IFS DOOR HANDLE	28046	1
33	IFS-40/50 SIDE PANELR/H	28030	1
***	IFS-40/50 SIDE PANEL L/H	28031	1
34	IR/IFS 6" LEG	37784	4

IFS-40/50 Fryer

ITEM	DESCRIPTION	PART NO.	PER VESSEL
***	IFS-40/50 LEG CHANNEL	28039	1
35	FRONT PLATE CASTER W/BRAKE	1061	2
36	REAR PLATE CASTER W/O BRAKE	1060	2
37	IFS-40 LOWER FLUE ASSEMBLY (3 TUBE FRYER)	28064	1
***	IFS-50 LOWER FLUE ASSEMBLY (4 TUBE FRYER)	28111	1
38	IFS-40 UPPER FLUE ASSEMBLY (3 TUBE FRYER)	28061	1
***	IFS-50 UPPER FLUE ASSEMBLY (4 TUBE FRYER)	28110	1
39	IFS-40/50 LOWER BACK PANEL (SAME AS IHR-F-40)	28070	1
40	IFS-40/50 UPPER BACK PANEL	28069	1
41	IFS-40/50 HEAT SHIELD TOP W/ COMPUTER CONTROL	28042	1
42	TRANSFORMER	1076	1
43	RELAY FOR PUMP FOR FRYER FILTER SYSTEM	1477	2
***	IF-BASKET LIFT BASE MOUNT MTG SOCKET	3028-2	2
44	IFSS COMPONENT MOUNT BRACKET	28037	2
45	IFS-40/50 COMPUTER CONTROL BOTTOM HEAT SHIELD	28043	1
46	IFS-40/50 FRONT PANEL ASSEMBLY W/COMPUTER CONTROL	28040	1
47	FRYER/CONTROLLER TEMP.(L) STYLE PROBE	1094	1
48	FRYER 10 PRODUCT COMPUTER	1178	1
***	FRYER 10 PRODUCT COMPUTER OVERLAY (FOR P/N 1178)	1178-1	1
49	IFS-40/50 LANDING LEDGE (RANGE MATCH FRYER)	28052	1
50	IFS-40/50 FRONT PANEL (ONLY ON RANGE MATCH FRYER)	28036	1
51	IFS-40/50 DOOR ASSY. FOR COMPUTER CONTROL	28047	1
+++	IFS-40/50 JOINER STRIP	28210	OPT
+++	IFS-40/50 SIDE SPLASH (SPECIFY SIDE)	28032	OPT
+++	GOOFER ROD	28087	OPT



FOOD SERVICE SPARES LTD

UNIT 4 SANDBROOK PARK, SANDBROOK WAY, ROCHDALE, OL11 1RY

01706 353 633

SALES@FOODSERVICESPARES.COM



WWW.FOODSERVICESPARES.COM